

COMMON GROUND DICKSON

BLOCK 25 SECTION 72 DICKSON

COMMUNITY CONSULTATION - PLANS



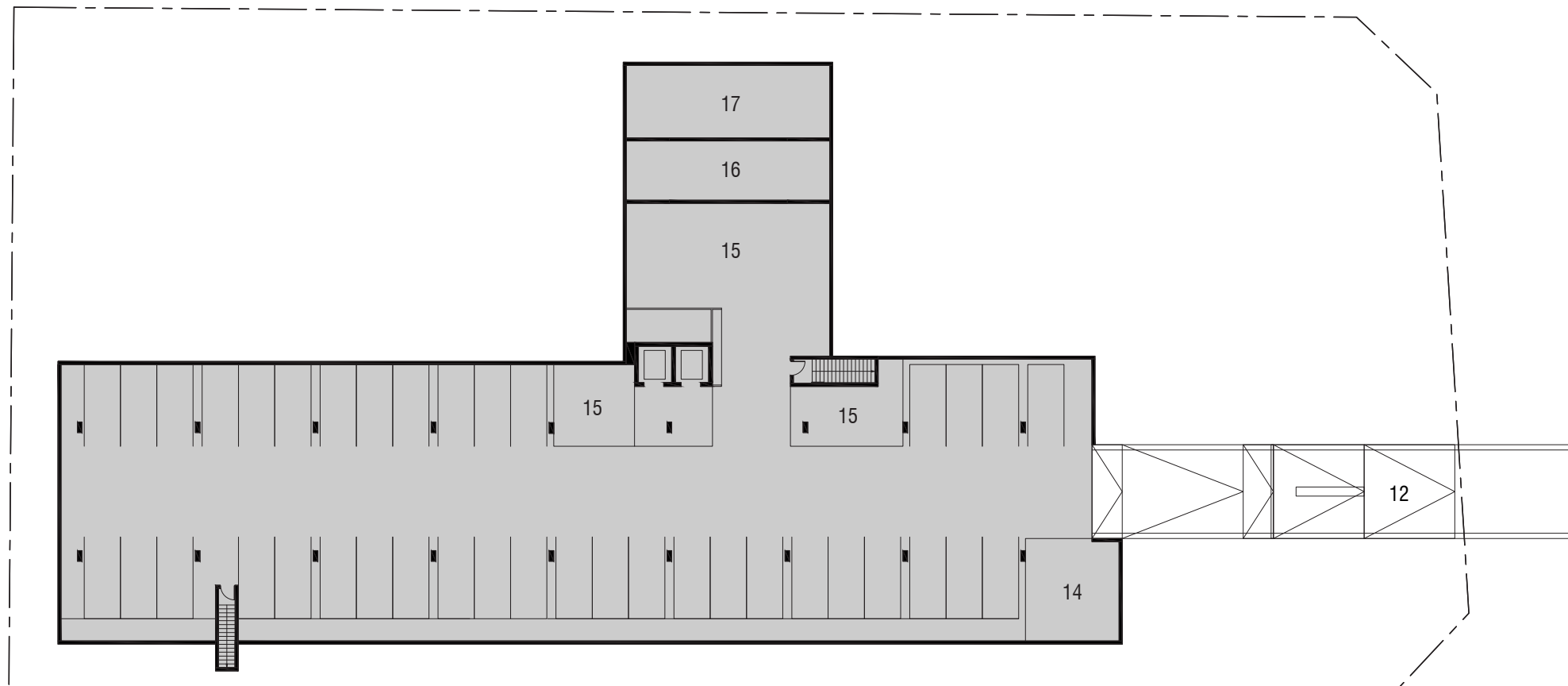
LEGEND

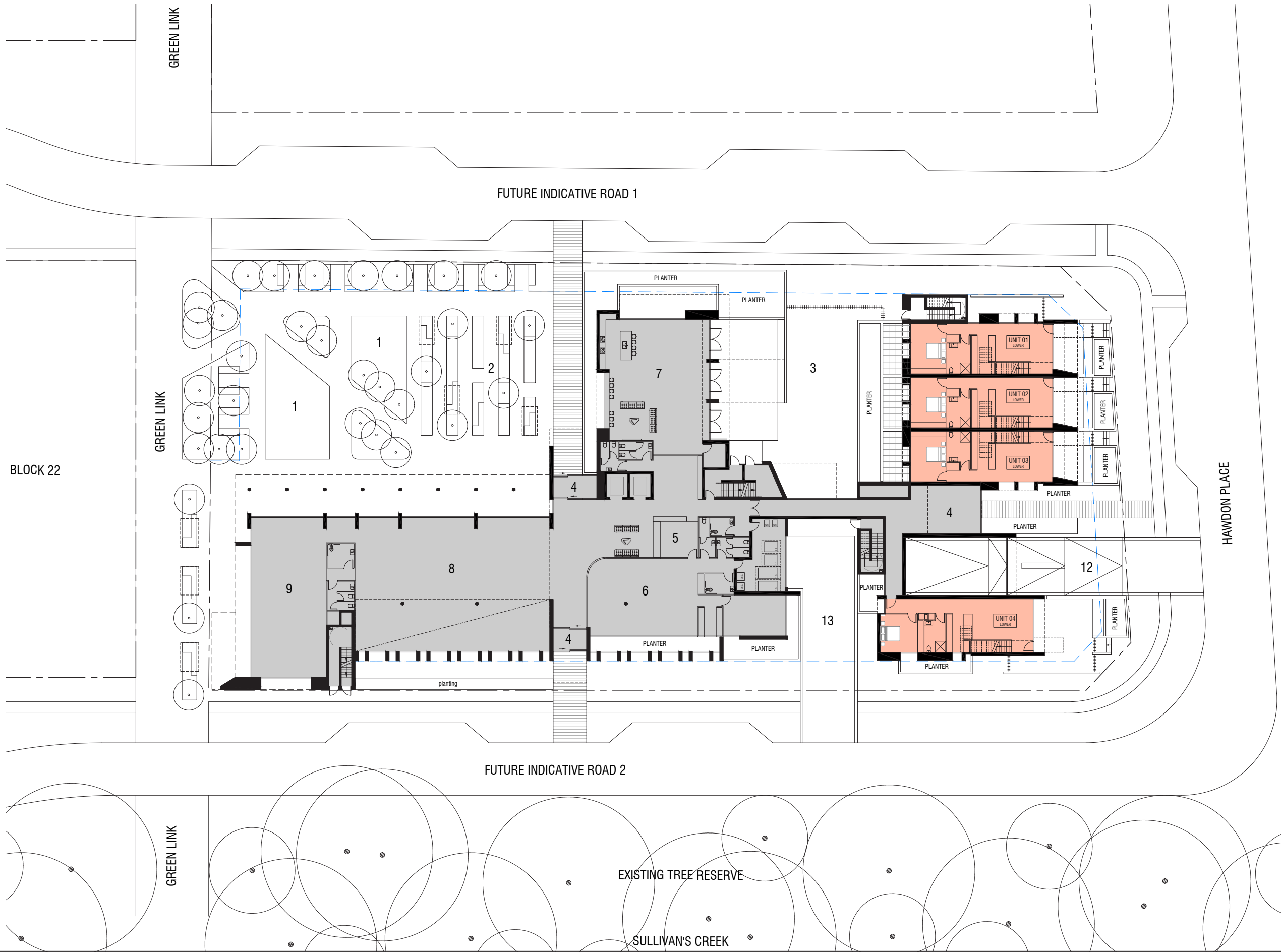
- 1 COMMUNITY POCKET PARK
- 2 COMMUNITY GARDENS
- 3 COMMON GROUND RESIDENTS PARK
- 4 ENTRY
- 5 RECEPTION
- 6 OFFICE / SUPPORT SERVICES
- 7 COMMON GROUND RESIDENTS LIVING ROOM
- 8 COMMUNITY USE TENANCY
- 9 SOCIAL ENTERPRISE
- 10 BREAKOUT SPACE
- 11 PLANT ROOM / SERVICES
- 12 BASEMENT ACCESS
- 13 GARBAGE TRUCK ACCESS
- 14 BIKE ENCLOSURE
- 15 RESIDENT STORAGE
- 16 COMMON GROUND STAFF STORAGE
- 17 WATER TANK

- 1 BED UNITS
- 2 BED UNITS
- 3 BED UNITS

LEGEND

- 1 COMMUNITY POCKET PARK
- 2 COMMUNITY GARDENS
- 3 COMMON GROUND RESIDENTS PARK
- 4 ENTRY
- 5 RECEPTION
- 6 OFFICE / SUPPORT SERVICES
- 7 COMMON GROUND RESIDENTS LIVING ROOM
- 8 COMMUNITY USE TENANCY
- 9 SOCIAL ENTERPRISE
- 10 BREAKOUT SPACE
- 11 PLANT ROOM / SERVICES
- 12 BASEMENT ACCESS
- 13 GARBAGE TRUCK ACCESS
- 14 BIKE ENCLOSURE
- 15 RESIDENT STORAGE
- 16 COMMON GROUND STAFF STORAGE
- 17 WATER TANK





- 1 BED UNITS
- 2 BED UNITS
- 3 BED UNITS

LEGEND

- 1 COMMUNITY POCKET PARK
- 2 COMMUNITY GARDENS
- 3 COMMON GROUND RESIDENTS PARK
- 4 ENTRY
- 5 RECEPTION
- 6 OFFICE / SUPPORT SERVICES
- 7 COMMON GROUND RESIDENTS LIVING ROOM
- 8 COMMUNITY USE TENANCY
- 9 SOCIAL ENTERPRISE
- 10 BREAKOUT SPACE
- 11 PLANT ROOM / SERVICES
- 12 BASEMENT ACCESS
- 13 GARBAGE TRUCK ACCESS
- 14 BIKE ENCLOSURE
- 15 RESIDENT STORAGE
- 16 COMMON GROUND STAFF STORAGE
- 17 WATER TANK

- 1 BED UNITS
- 2 BED UNITS
- 3 BED UNITS

LEGEND

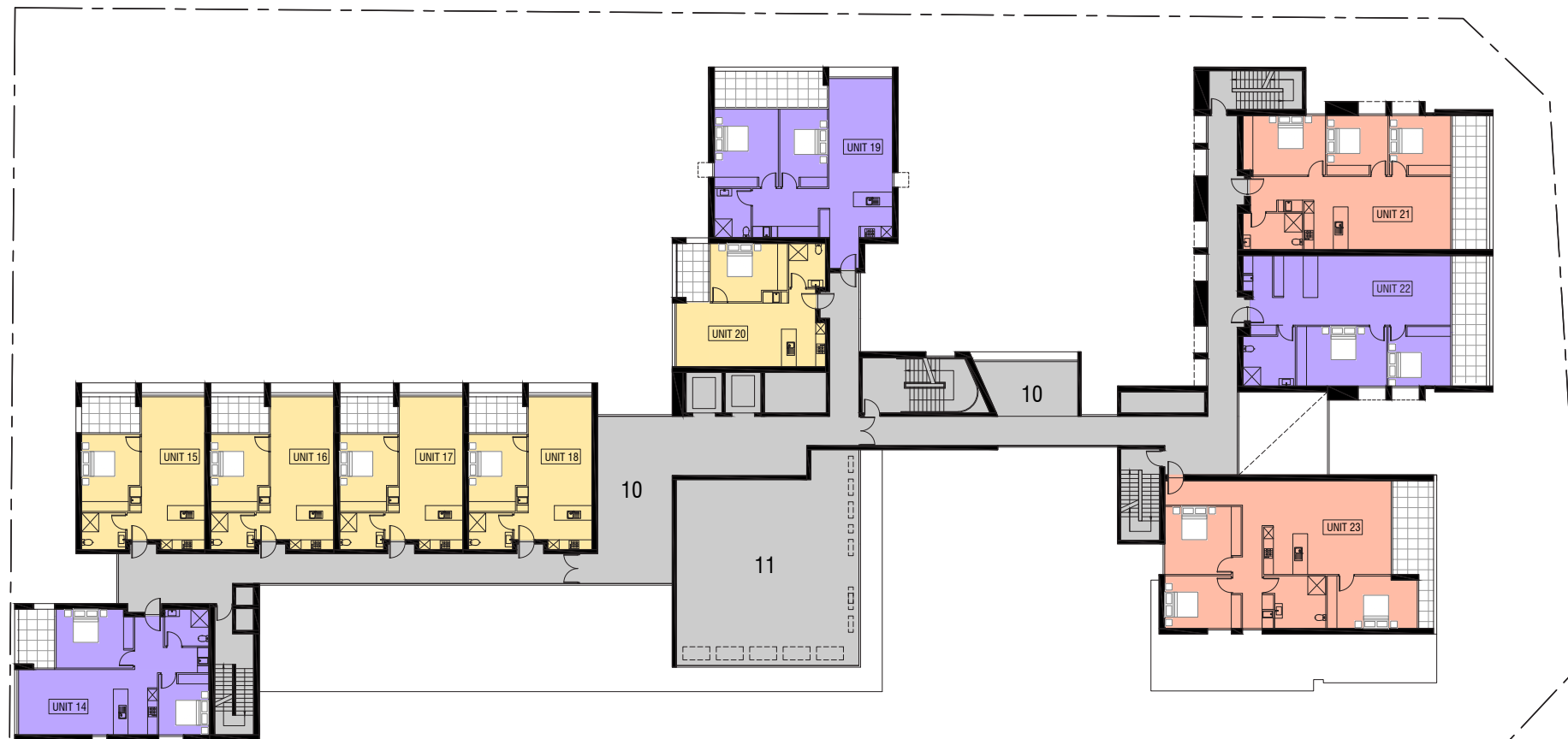
- 1 COMMUNITY POCKET PARK
- 2 COMMUNITY GARDENS
- 3 COMMON GROUND RESIDENTS PARK
- 4 ENTRY
- 5 RECEPTION
- 6 OFFICE / SUPPORT SERVICES
- 7 COMMON GROUND RESIDENTS LIVING ROOM
- 8 COMMUNITY USE TENANCY
- 9 SOCIAL ENTERPRISE
- 10 BREAKOUT SPACE
- 11 PLANT ROOM / SERVICES
- 12 BASEMENT ACCESS
- 13 GARBAGE TRUCK ACCESS
- 14 BIKE ENCLOSURE
- 15 RESIDENT STORAGE
- 16 COMMON GROUND STAFF STORAGE
- 17 WATER TANK



- 1 BED UNITS
- 2 BED UNITS
- 3 BED UNITS

LEGEND

- 1 COMMUNITY POCKET PARK
- 2 COMMUNITY GARDENS
- 3 COMMON GROUND RESIDENTS PARK
- 4 ENTRY
- 5 RECEPTION
- 6 OFFICE / SUPPORT SERVICES
- 7 COMMON GROUND RESIDENTS LIVING ROOM
- 8 COMMUNITY USE TENANCY
- 9 SOCIAL ENTERPRISE
- 10 BREAKOUT SPACE
- 11 PLANT ROOM / SERVICES
- 12 BASEMENT ACCESS
- 13 GARBAGE TRUCK ACCESS
- 14 BIKE ENCLOSURE
- 15 RESIDENT STORAGE
- 16 COMMON GROUND STAFF STORAGE
- 17 WATER TANK



- 1 BED UNITS
- 2 BED UNITS
- 3 BED UNITS

LEGEND

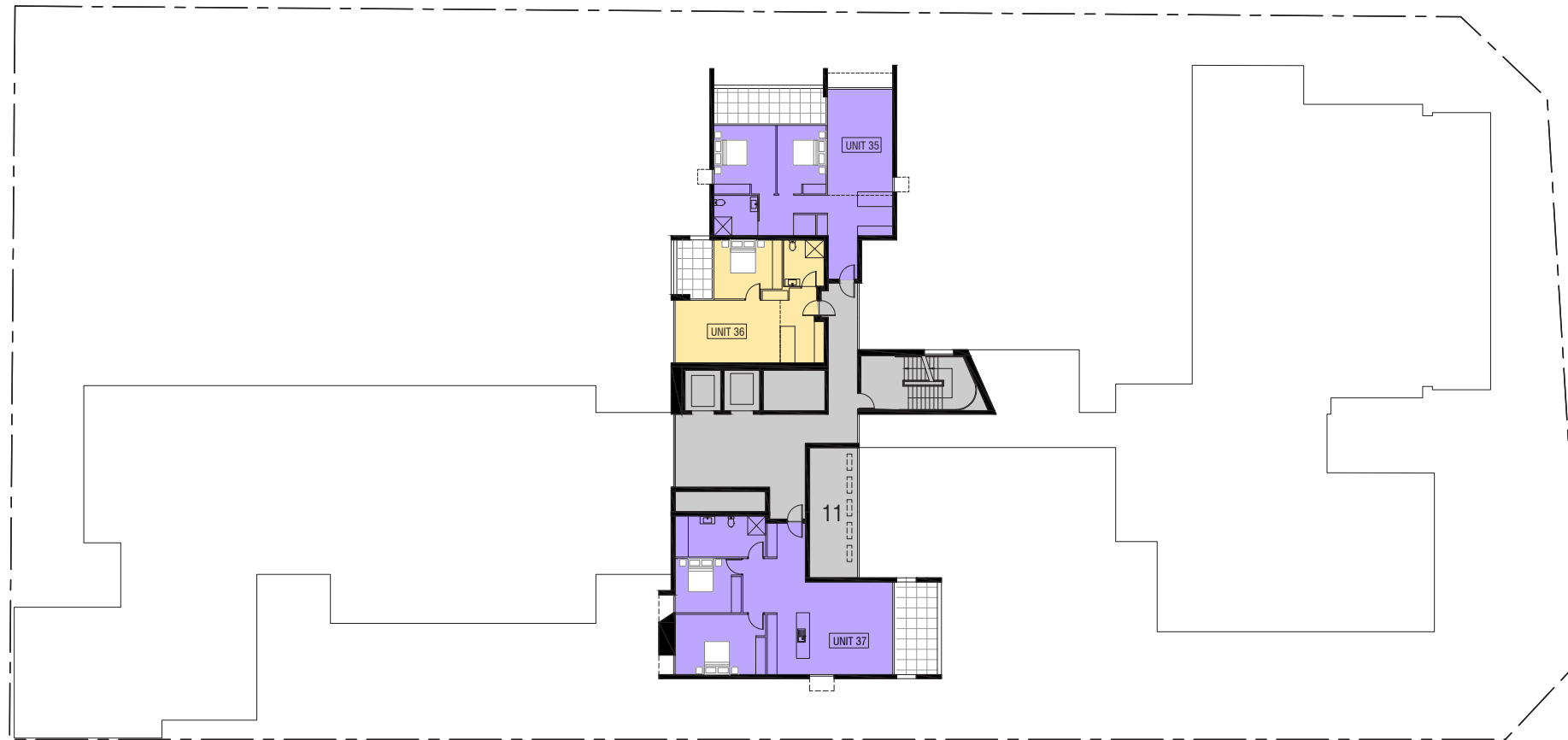
- 1 COMMUNITY POCKET PARK
- 2 COMMUNITY GARDENS
- 3 COMMON GROUND RESIDENTS PARK
- 4 ENTRY
- 5 RECEPTION
- 6 OFFICE / SUPPORT SERVICES
- 7 COMMON GROUND RESIDENTS LIVING ROOM
- 8 COMMUNITY USE TENANCY
- 9 SOCIAL ENTERPRISE
- 10 BREAKOUT SPACE
- 11 PLANT ROOM / SERVICES
- 12 BASEMENT ACCESS
- 13 GARBAGE TRUCK ACCESS
- 14 BIKE ENCLOSURE
- 15 RESIDENT STORAGE
- 16 COMMON GROUND STAFF STORAGE
- 17 WATER TANK



- 1 BED UNITS
- 2 BED UNITS
- 3 BED UNITS

LEGEND

- 1 COMMUNITY POCKET PARK
- 2 COMMUNITY GARDENS
- 3 COMMON GROUND RESIDENTS PARK
- 4 ENTRY
- 5 RECEPTION
- 6 OFFICE / SUPPORT SERVICES
- 7 COMMON GROUND RESIDENTS LIVING ROOM
- 8 COMMUNITY USE TENANCY
- 9 SOCIAL ENTERPRISE
- 10 BREAKOUT SPACE
- 11 PLANT ROOM / SERVICES
- 12 BASEMENT ACCESS
- 13 GARBAGE TRUCK ACCESS
- 14 BIKE ENCLOSURE
- 15 RESIDENT STORAGE
- 16 COMMON GROUND STAFF STORAGE
- 17 WATER TANK



- 1 BED UNITS
- 2 BED UNITS
- 3 BED UNITS

LEGEND

- 1 COMMUNITY POCKET PARK
- 2 COMMUNITY GARDENS
- 3 COMMON GROUND RESIDENTS PARK
- 4 ENTRY
- 5 RECEPTION
- 6 OFFICE / SUPPORT SERVICES
- 7 COMMON GROUND RESIDENTS LIVING ROOM
- 8 COMMUNITY USE TENANCY
- 9 SOCIAL ENTERPRISE
- 10 BREAKOUT SPACE
- 11 PLANT ROOM / SERVICES
- 12 BASEMENT ACCESS
- 13 GARBAGE TRUCK ACCESS
- 14 BIKE ENCLOSURE
- 15 RESIDENT STORAGE
- 16 COMMON GROUND STAFF STORAGE
- 17 WATER TANK

