

Murrumbidgee Corridor – Wildlife Observations

Area J17 – between the Murrumbidgee River and the Tuggeranong Town Special Reserve area extends from Point Hut Recreation area around to Tuggeranong Creek. Archery needs to be an agreed "Activity Declaration Clause" within the Special Reserve area.



Birds

Wedgetail Eagles	overhead
Kookaburra	D3
Magpies	Common
Magpie-Larks	Common
Pied Currawong	Common
Crows	Common
White-winged Cough	C4,C5,D4
Grey Butcherbird	C3
Galahs	Common
Red-rumped Parrot	Common
Superb Parrot	D5
Crimson Rosella	Common
Eastern Rosella	Common
Sulphur-crested Cockatoos	Common
Dove	
Crested Pigeon	E5
Cuckoo - yet to identify species	D3,D4
Common Swallow	D5,D6
Willie Wagtail	D5
Common Starling	D7,E5,E6,E7
Indian Myna	D4
Red Wattlebirds	Common
White-eared Honeyeater	C3,C4,D4,D5
White-throated Treecreeper	C5
Restless Flycatcher	D4,E5
Straited Thornbill	Common
Buff-rumped Thornbill	Common
Yellow-rumped Thornbill	B5
Scarlet Robins	B5,B6,C4,C5,C6,D4
Grey Fantails	C3,C4
Superb Fairy Wrens	C3,D3,D4,D5
European Goldfinch	B5
Double-barred Finch	

Murrumbidgee Corridor – Wildlife Observations

Area J17 – between the Murrumbidgee River and the Tuggeranong Town Special Reserve area extends from Point Hut Recreation area around to Tuggeranong Creek. Archery needs to be an agreed "Activity Declaration Clause" within the Special Reserve area.



Grey Shrike Thrush	B5,C5,C2
Golden Whisler	C2
Ruffus Whisler	B3,C2
Silvereyes	D4
Masked Laplings	D5,D6
Pacific Black Duck	D4
Musk Duck	D4

Animals

Eastern Grey Kangaroos	Common
Scrub Wallaby	C3
Common Wombat	C2,C3,C4,C5,C6,D3,D4
Echidna	D4,C3
Koala	
Fox	C3,D5,D6
Rabbits	C2,C5,D5,D6

Murrumbidgee Corridor – Wildlife Observations

Area J17 – between the Murrumbidgee River and the Tuggeranong Town

Special Reserve area extends from Point Hut Recreation area around to Tuggeranong Creek.

Archery needs to be an agreed "Activity Declaration Clause" within the Special Reserve area.

[illegible]

Murrumbidgee Corridor – Wildlife Observations

Area J17 – between the Murrumbidgee River and the Tuggeranong Town

Special Reserve area extends from Point Hut Recreation area around to Tuggeranong Creek.

Archery needs to be an agreed "Activity Declaration Clause" within the Special Reserve area.

[illegible]

Murrumbidgee Corridor – Wildlife Observations - Weeds and Fauna Management

Area J17 – between the Murrumbidgee River and the Tuggeranong Town.

Special Reserve area extends from Point Hut Recreation area around to Tuggeranong Creek.

Archery needs to be an agreed "Activity Declaration Clause" within the Special Reserve area.



Weeds - Survey June 2016

Blackberry	D3,D4,D5,C3,C4,C5,C6	Priority - Garlon late October
Pyracantha	C3,C4 - 2 plants in dam lines	Priority - RoundupAqua Cut&Dab
Cotoneaster	C3 - Gully T17&T18 + Top Gate	Priority - RoundupAqua Cut&Dab
Briar Rose	C3 - along dam drainage lines	Priority - RoundupAqua Cut&Dab
Serrated Tussock	None located	
Lantana	None located	
Fennel	Rare	RoundupAqua - Spray young
Peterson's Curse	Scattered	RoundupAqua - Spray young
St John's Wort	Scattered	Not a priority - can spray young
Spear Thistle	Rare - along drainage line & T22	Not a priority - can spray young
Verbascum sp. Mullein	Widespread	Not a priority - can spray young
African Love Grass	Widespread	Do not target

Replanting suggestions for smaller birds

Australian Blackthorn	Bursaria Spinosa
Burgan Teatree	Kunzea Ericoides
Kangaroo Grass	Present in area but will be overgrazed by Kangaroos
Red Grass	Present in area but will be overgrazed by Kangaroos

Replanting Enclosures - go larger - say 10m x 100m or 5m x 50m

- 4 strainer posts (drive in type)
- Steel pickets @ 5m
- Ring-lock fencing - extra length
- Rural fence extenders for steel pickets



Pyracantha - Firethorn



Pyracantha



Flax weed



Fennel



Cotoneaster



Blackberry



Scrub Rose



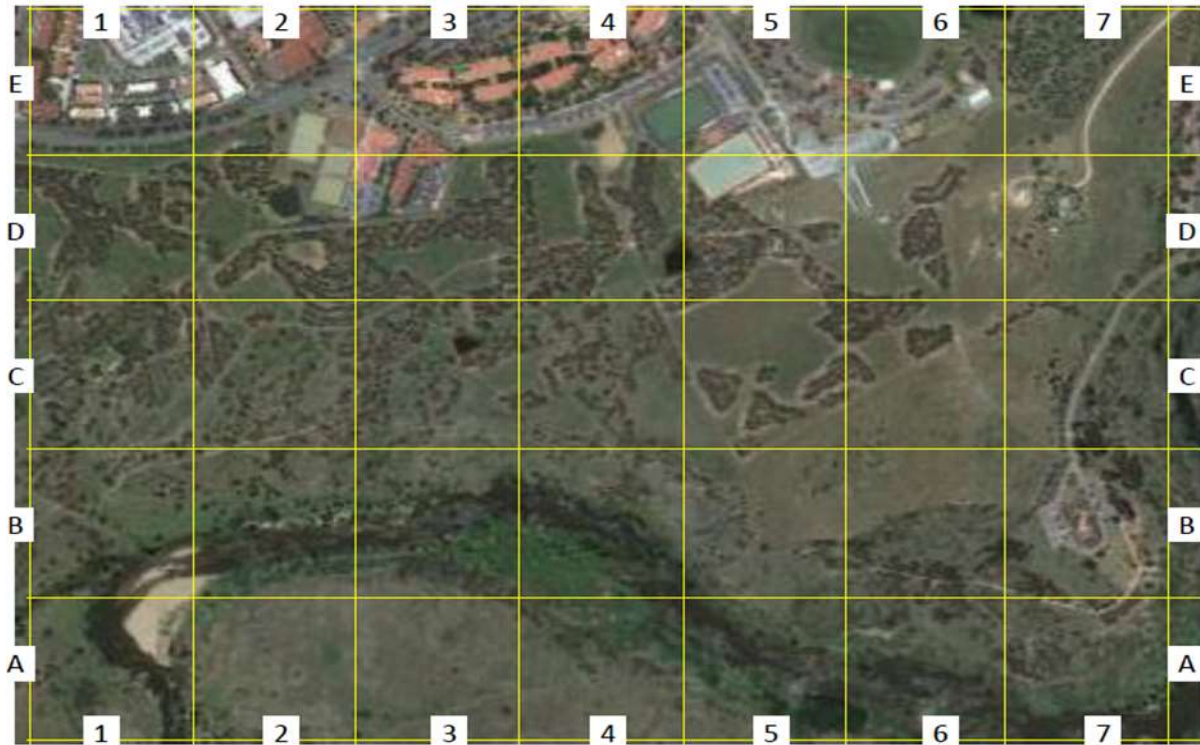
Spear Thistle

Murrumbidgee Corridor – Flora Observations

Area J17 – between the Murrumbidgee River and the Tuggeranong Town.

Special Reserve area extends from Point Hut Recreation area around to Tuggeranong Creek.

Archery needs to be an agreed "Activity Declaration Clause" within the Special Reserve area.



Australian Blackthorn
Burgan Teatree
Kangaroo Grass
Red Grass

Bursaria Spinosa
Kunzea Ericoides
Present in area but will be overgrazed by Kangaroos
Present in area but will be overgrazed by Kangaroos



Grevillia - spicky leaves









Murrumbidgee Corridor – Wildlife Observations - Site Survey Grid

Area J17 – between the Murrumbidgee River and the Tuggeranong Town
Special Reserve area extends from Point Hut Recreation area around to Tuggeranong Creek.
Archery needs to be an agreed "Activity Declaration Clause" within the Special Reserve area.

