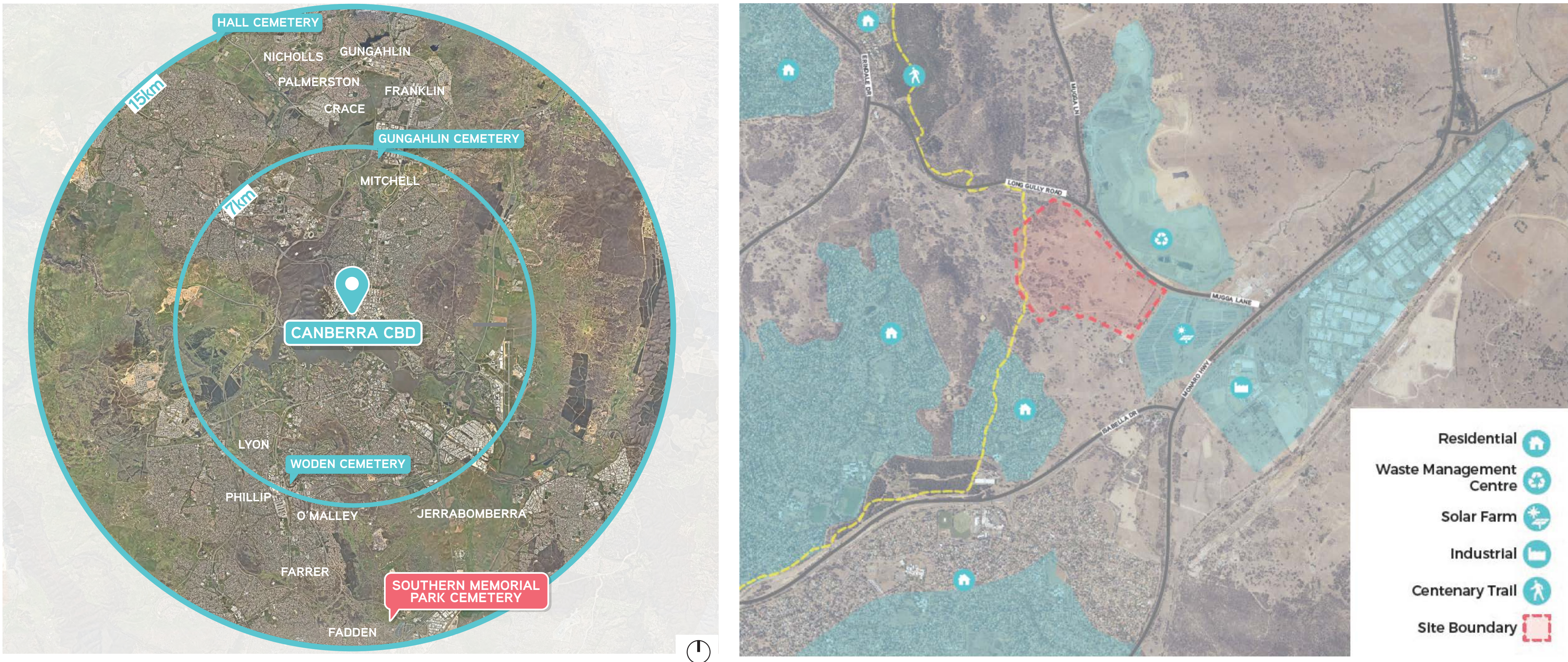


SOUTHERN MEMORIAL PARK DRAFT MASTERPLAN

The ACT Government proposes to develop Southern Memorial Park (SMP) to ensure ongoing and geographically equitable interment, crematorium and memorialisation services for the Canberra community. A site was identified in the Tuggeranong region on Mugga Lane.

The SMP Masterplan was prepared in 2012. The Masterplan was supported by geotechnical investigations, and survey, environmental and cultural heritage reports and business modelling. Being 8 years since the Masterplan was completed, the first phase of the Masterplan Review has been to review and update the Masterplan. This required undertaking further cultural heritage, geotechnical, environmental, transport investigations. The revised Masterplan also enables the SMP to be delivered progressively to meet ongoing community needs, including accommodating the horse agistment as a viable level for Stage 1 and 2. The design is flexible enough to accommodate changes that may be needed over the time the full project is delivered.

Site Location & Context



Design Principles



01 Developing a Memorial Park for the Future

- SMP is a fully integrated part of a portfolio of sites under ACT Public Cemeteries Authority management.
- The provision of major infrastructure at the new site occurs in a planned, rational and cost-effective manner
- Design for rational and incremental growth of interment spaces across the site
- A range of interment types -traditional and non-traditional and a range of cultural interment rites and traditions
- Acknowledgment of future changes in public expectations of interment
- The provision of a flexible and fully integrated digital infrastructure overlay



02 Delivering a high-quality Visitor Experience

- A world class, positive visitor experience that encourages the celebration of life
- A high level of visitor comfort and well-being with an emphasis on creating spaces that are welcoming and of a human scale
- Professional and future-proofed customer service delivery



03 Responsiveness to Place: the site & its cultural history

- A comprehensive recognition of the cultural history of the site
- Sympathetic development of the site that embraces the site's natural topography
- Planning of the site that proactively responds to the constraints of its underlying geology
- An acknowledgement of local fire ecology



04 Restoring the Natural Landscape & Showcasing Sustainability

- Protection of existing threatened endemic vegetation
- Regeneration of the natural ecological systems of the site and region through revegetation and habitat creation
- Enhancement of the natural waterways
- A high sensitivity to sustainable water use and incorporation of water sensitive urban design (WSUD) principles across the site



05 Engaging with Community

- Objective
- A celebration of community diversity
- A genuine acknowledgement of the culture of local indigenous communities
- An open place providing a range of recreational activities to the community



SOUTHERN MEMORIAL PARK

DRAFT MASTERPLAN



- 1 Southern Memorial Park Boundary
- 2 Main Entry with signalised intersection onto Mugga Lane
- 3 Entry Road
- 4 Main Visitor Facility
- 5 Crematorium
- 6 Formal Carpark (160 bays)
- 7 Works Compound
- 8 Service Driveway
- 9 Traditional Burial in Garden Rooms
- 10 Road network with parking
- 11 Wetlands with Stormwater Treatment
- 12 Detention Basin with Stormwater Treatment
- 13 Overflow Carpark (150 bays)
- 14 Look out with Shelter
- 15 Outdoor Chapel Pavilion overlooking dam
- 16 Mausoleum
- 17 Outdoor Performance Space / Amphitheatre
- 18 Natural Burials & Ashes Commemoration In Revegetated Bushland
- 19 Natureplay
- 20 New Horse Riding Trail linked to Existing Trails
- 21 New Walking Trail linked to Canberra Centenary Trail

SOUTHERN MEMORIAL PARK MAIN VISITOR FACILITY



- ① Minor Function Hall (50 people)

② Major Function Hall (200 people)

③ Halls can be combined for large events

④ Public Toilets
- ⑤ Cafe and Florist

⑥ Administration Building

⑦ Major Hall (200 people with overflow to the front)

⑧ Minor Hall (50 people with overflow to the courtyard)
- ⑨ Crematorium

⑩ Porte Cochere

⑪ Views to landscape

⑫ Shared Road



View 1 of Memorial Halls from the Porte Cochere & Shared Road



View 2 of Function Halls from the Porte Cochere & Shared Road



View 3 of covered connection between the Memorial Halls and the Function Halls



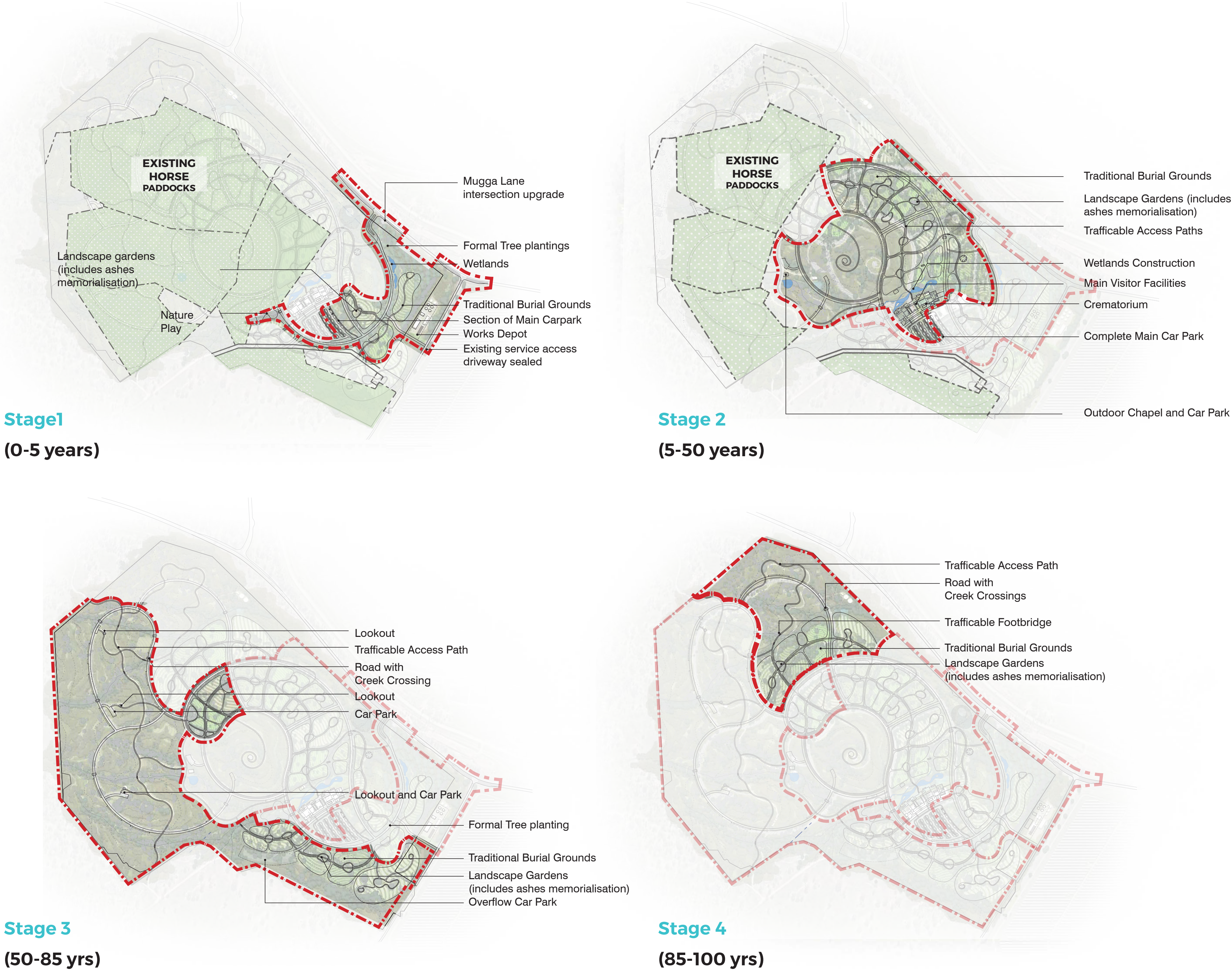
Internal view of a Memorial Hall.

SOUTHERN MEMORIAL PARK

DRAFT MASTERPLAN

Development Staging

The Southern Memorial Park staging diagrams provide an indicative timeframe for future works. This is based on the understanding that development will occur incrementally and is subject to future funding for detailed design and construction. Development is also subject to approvals processes, for example Development Approval for Stage 1 works and environment approvals for further stages. Four stages are proposed over the estimated 100+ years of the facility's life of active interment.



Types of Burial

Southern Memorial Park is essentially an non-denominational cemetery set within an Australian bushland aesthetic. The site has been dedicated to be predominantly Multi Faith in accordance with Canberra Cemeteries' policy and the overall demand.

Canberra Cemeteries offers various types of interment options to meet the differing religious, ethnic and cultural needs of the ACT population. The burial types include the following:

Lawn
Areas have mown grass or gravel with a precast or in-situ concrete 'beam' which delineates the plots and to which standard-size memorial plaques are fixed.

Memorial Lawn
These areas have a similar although larger beam, on which are constructed vertical headstones with a maximum height of about 1m. These could either be A standardised design or individually selected.

Monument
Dedicated plots are purchased and memorial masonry constructed on the plot, to a maximum plan dimension and vertical height.

Denominational Areas
In the future, dependent on demand, there is a possibility for designated Muslim and Jewish burials areas. Dedicated areas will be allocated to those faiths which strongly adhere to separate zones for their burials, such as Muslim, Jewish and potentially others as required and agreed.

Mausoleum Burial
Another form of burial, traditional in certain European communities, is the Mausoleum, where the embalmed remains are sealed in a coffin which is ceremonially placed in a niche within an above-ground building, which can be of significant monumental character.

Natural Burial
Canberra Cemeteries also provide natural burial, a form of interment that seeks to make as little impact upon the environment as possible.

Final allocation of the types of burial will be subject to a business case.

Plots by Stage

Stage	Traditional Burial Yield	Natural Burial Yield	Approx. Time Period
Stage 1	2,500 plots	nil	10-15 years
Stage 2	6,900 plots	2,000 plots	25-30 years
Stage 3	7,450 plots	4,000 plots	30-35 years
Stage 4	4,950 plots	2,000 plots	20-15 years
TOTAL	21,800 plots 43,600 burials	8,000 plots	
	82%	18%	
	51,600 burials		

The Master Plan provides a long term capacity of approximately 30,000 plots comprising of 22,000 traditional burial plots and 8,000 natural burial plots.

Current policy allows 2 burials per plot by a single plot 'owner' and single burial per plot for natural burial plots. This equates to a total burial capacity of approximately 43,600 burials over 100 years.

The rates of burial for SMP are:
200 burials per annum for first 10 yrs: 2,000 burials
400 burials per annum for next 20 yrs: 8,000 burials
600 burials per annum for next 70+ yrs: 42,000+ burials

(The calculations do not include ashes memorilisations.)

This gives Southern Memorial Park 103 years memorial park life.



SOUTHERN MEMORIAL PARK DRAFT MASTERPLAN

