

# Inner North

## Key features of the district



### Transport and movement infrastructure and services

- There is an off-road cycle path from Dickson, Lyneham, O'Connor and Turner to the Australian National University (ANU) and Civic.
- There is a light rail service from the City to Gungahlin town centre.
- There is a light rail service (stage 2) currently underway from the City to Woden town centre.
- A light rail service is proposed in the future from the City to Belconnen town centre.
- There are rapid bus services between the City and the other town centres.

### Centres and employment clusters

- Canberra City is the main commercial centre in the district and the ACT.
- Braddon commercial area is a mixed-use precinct to the north of the City.
- There is a group centre at Dickson, which is the largest group centre in Canberra and a key employment area.
- There are local centres throughout the district.
- The Australian National University (ANU) is another key employment area.



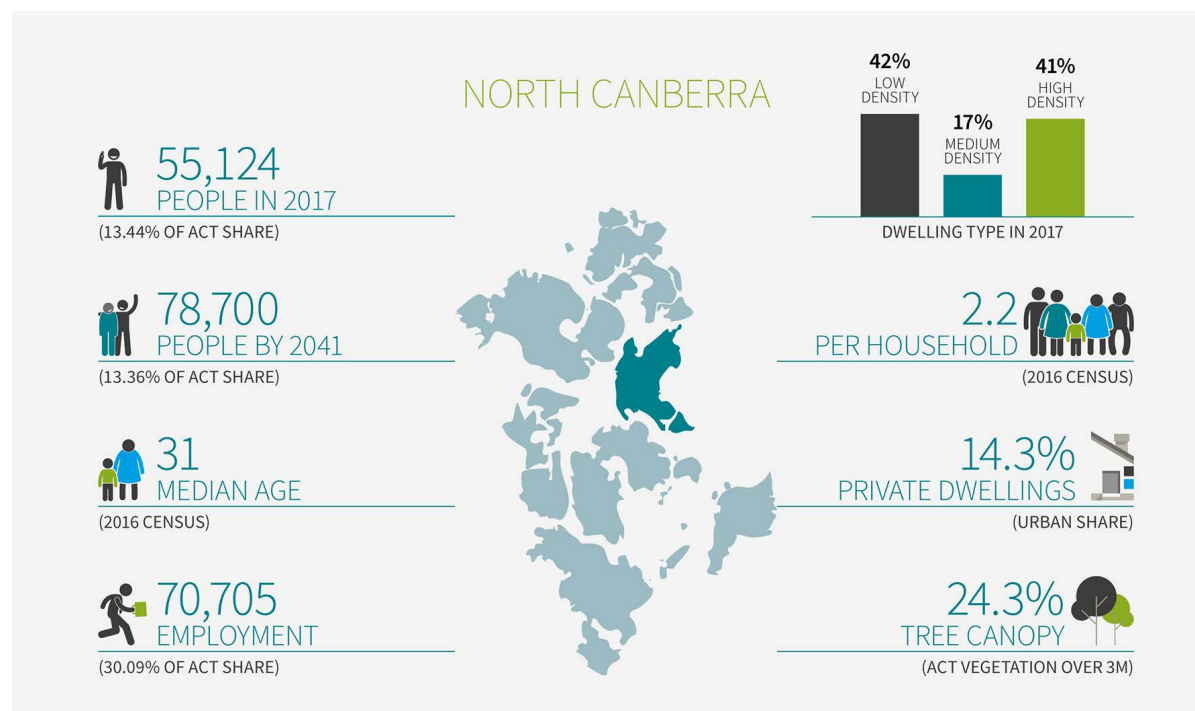
### Housing and other buildings

- There are heritage buildings and housing precincts in parts of Acton, City, Ainslie, Reid and O'Connor.
- There is mixed use, housing and office development occurring along the Northbourne Avenue corridor and in the City.



### Description

- First suburbs established c.1928.
- There are 14 suburbs in North Canberra district: Acton, Ainslie, Braddon, Campbell (Duntroon), City, Dickson, Downer, Hackett, Lyneham, O'Connor, Reid, Russell, Turner and Watson.
- North Canberra is a centrally located district in the ACT.
- Canberra's city centre is at the southern edge of the district.



### Urban intensification and infill opportunities

- There are urban intensification areas and infill opportunities within the City and along the Northbourne Avenue and Constitution Avenue corridors.
- A new UNSW City Campus is proposed to be constructed along Constitution Avenue in Reid.

### Community and recreation facilities

- There are three tertiary institutions in the district – the ANU and Australian Catholic University and the Canberra Institute of Technology (CIT) Reid Campus.
- There are a number of primary schools, high schools and colleges in the district.
- The CIT Reid Campus is being redeveloped for a new UNSW City Campus.
- Thoroughbred Park is located in the north of the district.
- There are other community and recreation facilities throughout the district.



### Natural environment

- There are wetlands at Dickson, Lyneham and O'Connor along the Sullivans Creek corridor.
- Mount Ainslie and Mount Majura are at the eastern edge of the district.
- Black Mountain and O'Connor Ridge are at the western edge of the district.
- There are established street trees and greenery on many scales in the streets, blocks and parks.



### Government commitments

*from Parliamentary and Government Agreement  
10th Legislative Assembly*

- Complete **Common Ground Dickson** [for affordable housing]. (Appendix 1, B, 1.v.)