



redbox design group

02 6280 4949 (tel)
inbox@redboxdesigngroup.com.au
Unit 12/285 Canberra Avenue Fyshwick ACT
PO Box 4575 Kingston ACT 2604
redboxdesigngroup.com.au

FRANKLIN GRASSLANDS
Franklin Grasslands Landscape Plan

1581 18 January 2021



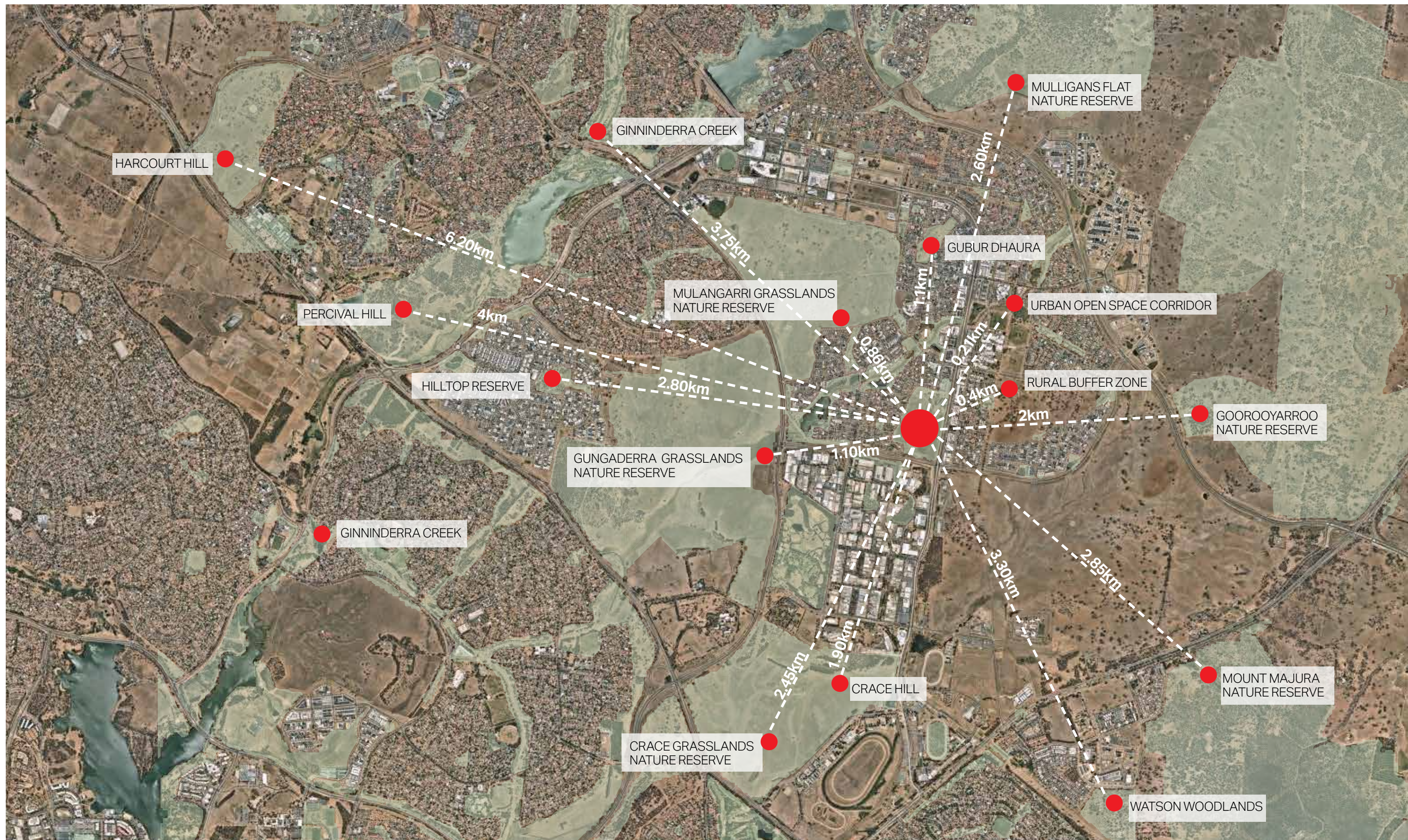
ACT
Government

project
1581



sheet
1

issue
02





redbox design group

02 6280 4949 (tel)
inbox@redboxdesigngroup.com.au

Unit 12/285 Canberra Avenue Fyshwick ACT
PO Box 4575 Kingston ACT 2604

redboxdesigngroup.com.au

FRANKLIN GRASSLANDS

Landscape Context
Patch Connectivity

1581 21 August 2020



project
1581



sheet
3
issue
01



OFFSET MANAGEMENT ZONES

Offset Management Zones recommended by Umwelt, 2016 to protect and extend existing native grassland patches.

LEGEND

	MANAGEMENT ZONE A Native Grassland Patches	5Ha
	MANAGEMENT ZONE B Management Buffer	4Ha
	MANAGEMENT ZONE C Higher slopes, Mixed dominance	5.5Ha
	MANAGEMENT ZONE D Drainage lines, Exotic dominated	2.5Ha
	MANAGEMENT ZONE E Box gum woodland	2.5Ha
	MANAGEMENT ZONE F Spoil site	0.7Ha

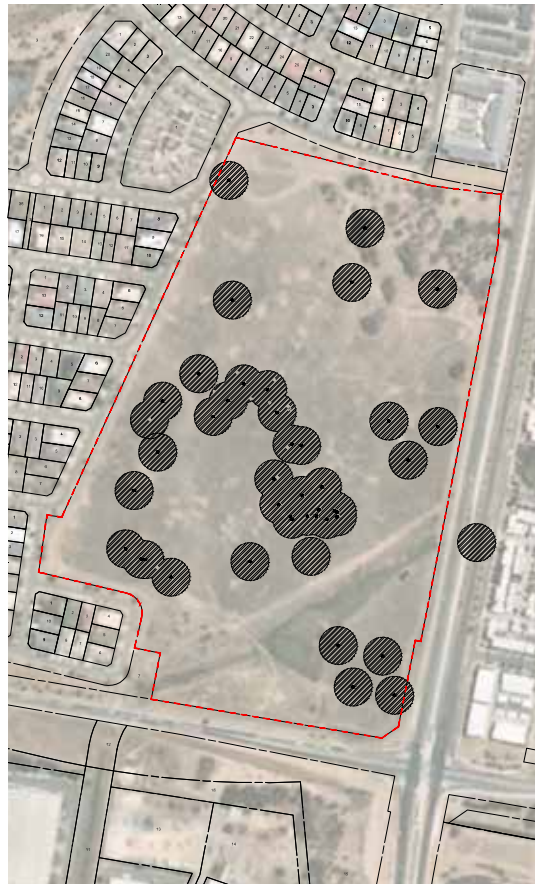


FRANKLIN GRASSLANDS VEGETATION

Existing vegetation identified in 2018 by Capital Ecology.

LEGEND

	ACT01 ZONE 1 Native Very High Diversity	1.46Ha
	ACT01 ZONE 2 Native Moderate to High Diversity	1.9Ha
	ACT01 ZONE 3 Native Low Diversity	2.21Ha
	ACT01 ZONE 4 Exotic Low Diversity	9.62Ha
	PCT - ACT16 ZONE 5 Native Low Diversity	1.08Ha
	PCT - ACT16 ZONE 6 Canopy Low Diversity	2.69Ha
	PCT - ACT16 ZONE 8 Exotic Low Diversity	1.2Ha



THREATENED FLORA

Monitoring and threatened plant locations and their recommended buffers identified in 2019 by the ACT Government.

LEGEND

	THREATENED PLANT LOCATIONS [+15m buffers]
--	--

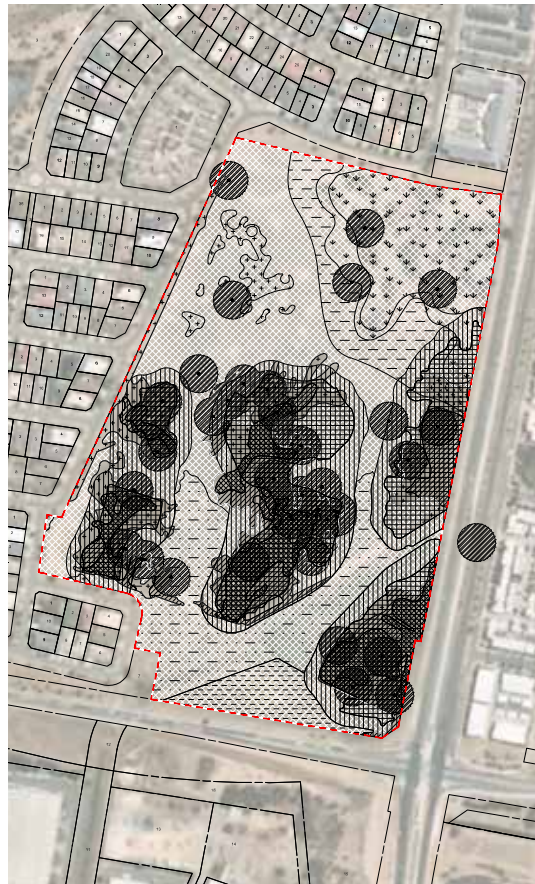


EXOTIC VEGETATION MAPPING

Existing areas of exotic vegetation identified in 2018 by Capital Ecology.

LEGEND

	EXOTIC LOW DIVERSITY	14.8Ha
--	----------------------	--------



COMBINED MAPPINGS

Mappings for existing vegetation, recommended offset management zones and threatened flora overlay with the existing exotic vegetation.

Darkest areas with multiple overlay / tightest hatching indicates areas identified as having high value for landscape restoration. The total site is approximately 20.17Ha (actmapi boundary), the existing Very High Diversity covers approximately 1.56Ha. There is a requirement for 6Ha to be allocated to Golden Sun Moth habitat whilst maintaining the current habitat for existing populations of Striped Legless lizards.

Lighter hatching / little overlay indicates areas dominated by exotic / low diversity vegetation identified for potential community use.



- LEGEND
- FRANKLIN GRASSLAND RESERVE BOUNDARY
 - EXISTING FENCING
 - EXISTING TREES IN WOODLAND
 - STEEP EDGE
 - SPOIL MOUND
 - QUARTZ RIDGE
 - PREVAILING WIND
 - PERMANENT WATER BODY
 - EPHEMERAL WATER BODY
 - DRAINAGE LINE
 - KEY VIEW POINT (ON SITE)
 - KEY VIEW POINT (INTO SITE)

- EXISTING SLOPE & GRADIENT
- RIDGE
 - UPPER SLOPE
 - MID SLOPE
 - FLAT LANDS
 - LOWER SLOPE
 - GULLY

SCALE 1:1500@A1 | 1:3000@A3
0 15 30 45 60 75m

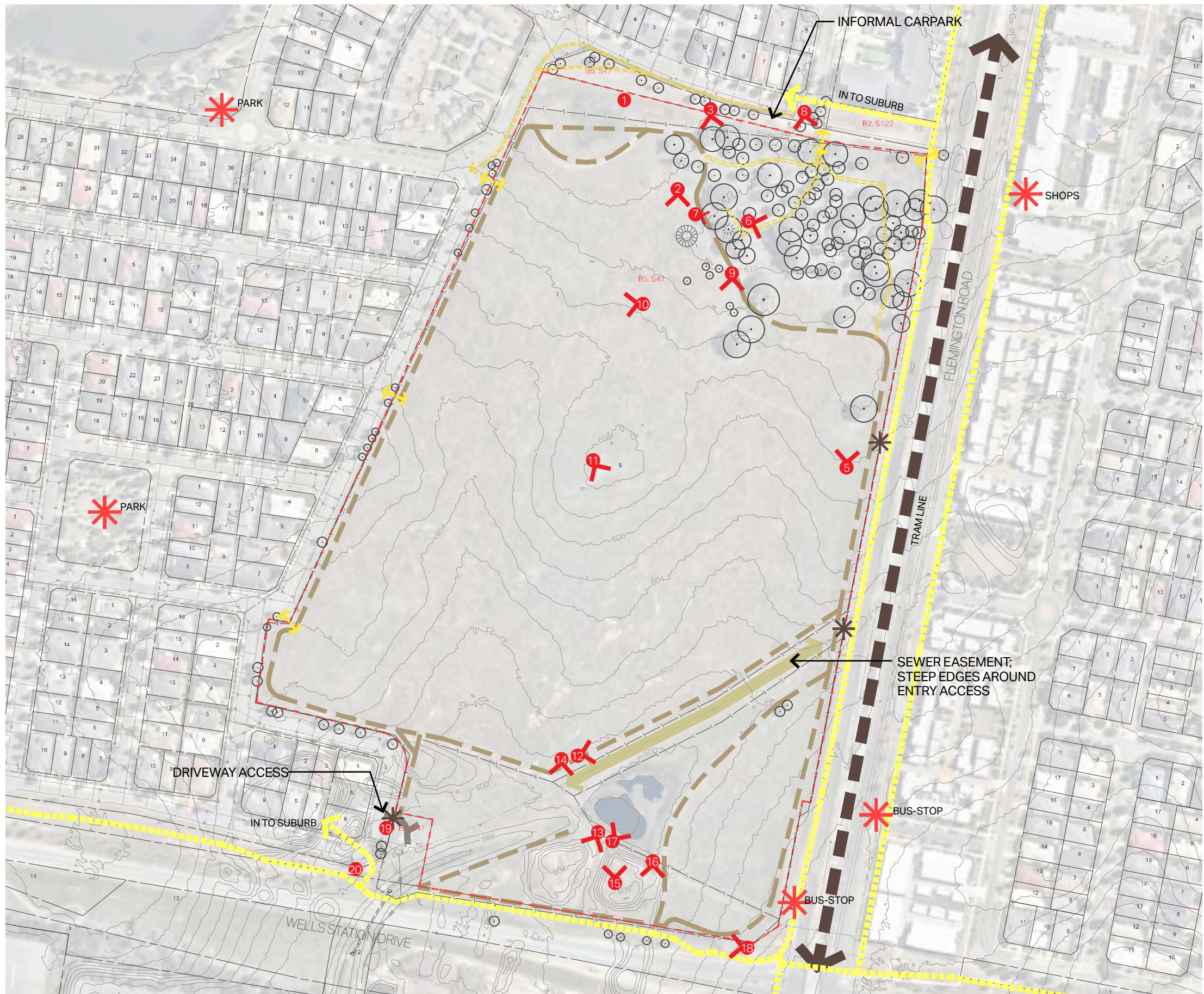
* Level of accuracy of information included in plans, mappings and images variable as produced without survey.

redbox design group

02 6280 4949 (tel)
inbox@redboxdesigngroup.com.au
Unit 12/285 Canberra Avenue Fyshwick ACT
PO Box 4575 Kingston ACT 2604
redboxdesigngroup.com.au

FRANKLIN GRASSLANDS
Landscape Analysis
Existing Conditions - Plan 1
1581 21 August 2020





LEGEND

- FRANKLIN GRASSLAND RESERVE BOUNDARY
- EXISTING FENCING
- EXISTING TREES IN WOODLAND
- PEDESTRIAN ENTRY POINT
- MAINTENANCE ACCESS GATE
- FIRE ABATEMENTS SLASH LINES
- SEWER MAINTENANCE TRACK
- DRIVEWAY ACCESS [GATE]
- PLACES OF INTEREST
PUBLIC TRANSPORT SHOPPING / PARKS
- MAJOR TRANSPORT CORRIDOR
- PEDESTRIAN PATH [CONCRETE / BITUMEN]
- INFORMAL PEDESTRIAN TRACK
- FOCAL POINTS [SCULPTURAL TREE]
- SIGNS OF COMMUNITY USE * refer woodlands photo
- PHOTO VIEW



SCALE 1:1500@A1 | 1:3000@A3
0 15 30 45 60 75m

* Level of accuracy of information included in plans, mappings and images variable as produced without survey.

redbox design group

02 6280 4949 (tel)
inbox@redboxdesigngroup.com.au
Unit 12/285 Canberra Avenue Fyshwick ACT
PO Box 4575 Kingston ACT 2604
redboxdesigngroup.com.au

FRANKLIN GRASSLANDS
Landscape Analysis
Existing Conditions - Plan 2
1581 21 August 2020



project
1581



sheet
6
issue
01

LANDSCAPE QUALITY



EXISTING INFRASTRUCTURE



redbox design group

02 6280 4949 (tel)
inbox@redboxdesigngroup.com.au
Unit 12/285 Canberra Avenue Fyshwick ACT
PO Box 4575 Kingston ACT 2604
redboxdesigngroup.com.au

FRANKLIN GRASSLANDS
Landscape Analysis
Existing Conditions - Woodlands and Ephemeral Wetland
1581 21 August 2020

ACT Government
project
1581

ACT
sheet
7
issue
01

LANDSCAPE QUALITY



PLANT SPECIES



redbox design group

02 6280 4949 (tel)
inbox@redboxdesigngroup.com.au
Unit 12/285 Canberra Avenue Fyshwick ACT
PO Box 4575 Kingston ACT 2604
redboxdesigngroup.com.au

FRANKLIN GRASSLANDS
Landscape Analysis
Existing Conditions - Grasslands
1581 21 August 2020

LANDSCAPE QUALITY



EXISTING INFRASTRUCTURE



redbox design group

02 6280 4949 (tel)
inbox@redboxdesigngroup.com.au
Unit 12/285 Canberra Avenue Fyshwick ACT
PO Box 4575 Kingston ACT 2604
redboxdesigngroup.com.au

FRANKLIN GRASSLANDS
Landscape Analysis
Existing Conditions - Spoil mound and Wetland
1581 21 August 2020



SCALE 1:1500@A1 | 1:3000@A3
0 15 30 45 60 75m

* Level of accuracy of information included in plans, mappings and images variable as produced without survey.

redbox design group

02 6280 4949 (tel)
inbox@redboxdesigngroup.com.au

Unit 12/285 Canberra Avenue Fyshwick ACT
PO Box 4575 Kingston ACT 2604

redboxdesigngroup.com.au

FRANKLIN GRASSLANDS

Landscape Analysis
Stakeholder Workshop - Key Zoning

1581 21 August 2020



project
1581



sheet
10
issue
01



LEGEND

- DISCOURAGE PUBLIC ACCESS
- FORMALISED PATH
- SLASH LINES AS TRAIL PATH
- KEY PUBLIC PEDESTRIAN ENTRY
- SECONDARY PEDESTRIAN ENTRY
- VEHICLE (MAINTENANCE) ENTRY
- POTENTIAL FORMALISED PARKING
- KEY FENCE INTERFACE
- KEY VIEW INTO SITE
- KEY CORNER

PLAN KEY

- WOODLAND AREA TO BE RETAINED AND NOT FRAGMENTED
- INFORMAL SHRUB PLANTINGS DEFINE WOODLAND BOUNDARY
- POTENTIAL FOR CARPARKING AND MAINTENANCE ACCESS POINT ALONG THIS FRONTAGE
- POTENTIAL TO ENHANCE EPHEMERAL WETLAND
- LOWER QUALITY GRASSLAND ZONE-POTENTIAL TO EXPLORE MULTI USES EG: PICNIC / SEATING; SEED ORCHARD; BUSH TUCKER; AREA TO HAVE MINIMUM VEHICLE ACCESS
- FLEMINGTON ROAD FENCE TO DISCOURAGE KANGAROOS. FENCE TO BE HIGHER QUALITY THAN AG. STYLE FENCE
- DISCOURAGE (PUBLIC) ACCESS INTO HIGH QUALITY GRASSLAND
- POTENTIAL TO EXTEND WETLAND AND INTEGRATE BOARDWALKS / BIRD HIDES ETC TO THE WEST. NO PUBLIC ACCESS
- HIGHLY DISTURBED AREAS POTENTIAL TO EXPLORE MULTI USE EG. RESTORATION GRASSLAND; LUNCH / SEATING AREA; NATURE DISCOVERY
- POTENTIAL TO USE EXISTING ENTRY / BITUMEN AS ACCESS POINT SUBJECT TO TCCS APPROVAL



SCALE 1:1500@A1 | 1:3000@A3
0 15 30 45 60 75m

* Level of accuracy of information included in plans, mappings and images variable as produced without survey.

redbox design group

02 6280 4949 (tel)
inbox@redboxdesigngroup.com.au

Unit 12/285 Canberra Avenue Fyshwick ACT
PO Box 4575 Kingston ACT 2604

redboxdesigngroup.com.au

FRANKLIN GRASSLANDS
Landscape Analysis
Stakeholder Workshop - Opportunities & Constraints
1581 21 August 2020



project
1581



sheet
11

issue
01

WEED MANAGEMENT

- BUFFER PLANTING TO BOUNDARY

EPHEMERAL WETLAND AND DRAINAGE LINE

- RETAIN EPHEMERAL WETLAND AND SUPPLEMENT WITH NATIVE ENDEMIC PLANTINGS
- POSSIBLE ESTABLISHMENT OF TRIAL AREA OF ENDANGERED SPECIES EG *LEPIDIUM GINNINDERRENSE*, GINNINDERRA PEPPERCRESS
- REALIGN DRAINAGE (FROM THE EAST) TO ACCOMMODATE NEW FENCE ALIGNMENT

NATURAL TEMPERATE GRASSLAND

- RETAIN AS MUCH OF EXISTING GRASSLAND AREA WITH MINIMAL INTERVENTION ALLOWING VIEWING FROM 'OUTSIDE IN'
- ACTIVATED AREAS KEPT TO DISTURBED AREAS REQUIRING REHABILITATION / MANAGEMENT OF WEEDS
- EXTEND SITE BY FENCING TO BOUNDARY ALONG NORTHERN EDGE

MOUND

- STEPPED MOUND

HABITAT

- SMALL AREA OF SCATTERED TREES FOR SHADE AND FOR NATIVE BIRDS
- SMALL TREES / LARGE SHRUBS ON SOUTH SIDE OF MOUND TO CREATE HABITAT FOR SMALL BIRDS

WOODLAND

- DEAD TREES TO BE RETAINED ONSITE
- PRUNING OF TREES REQUIRED ALONG ACCESS PATHWAYS AND RETAINED ON GROUND AS A CONTROL MEASURE, KEEPING PEDESTRIANS ON PATHWAYS

WEED MANAGEMENT

- CONTROL MEASURES TO BE EXPLORED FOR REMOVAL OF WEEDS WITHIN WOODLAND AREA

ACCESS CONTROLS

- FENCED BOUNDARY MAINTAINED WITH DEDICATED ENTRIES
- PUBLIC ACCESS CONTROLLED VIA PLANTING BEDS, LOW FENCES, ROCK SPALLING

BIOMASS MANAGEMENT

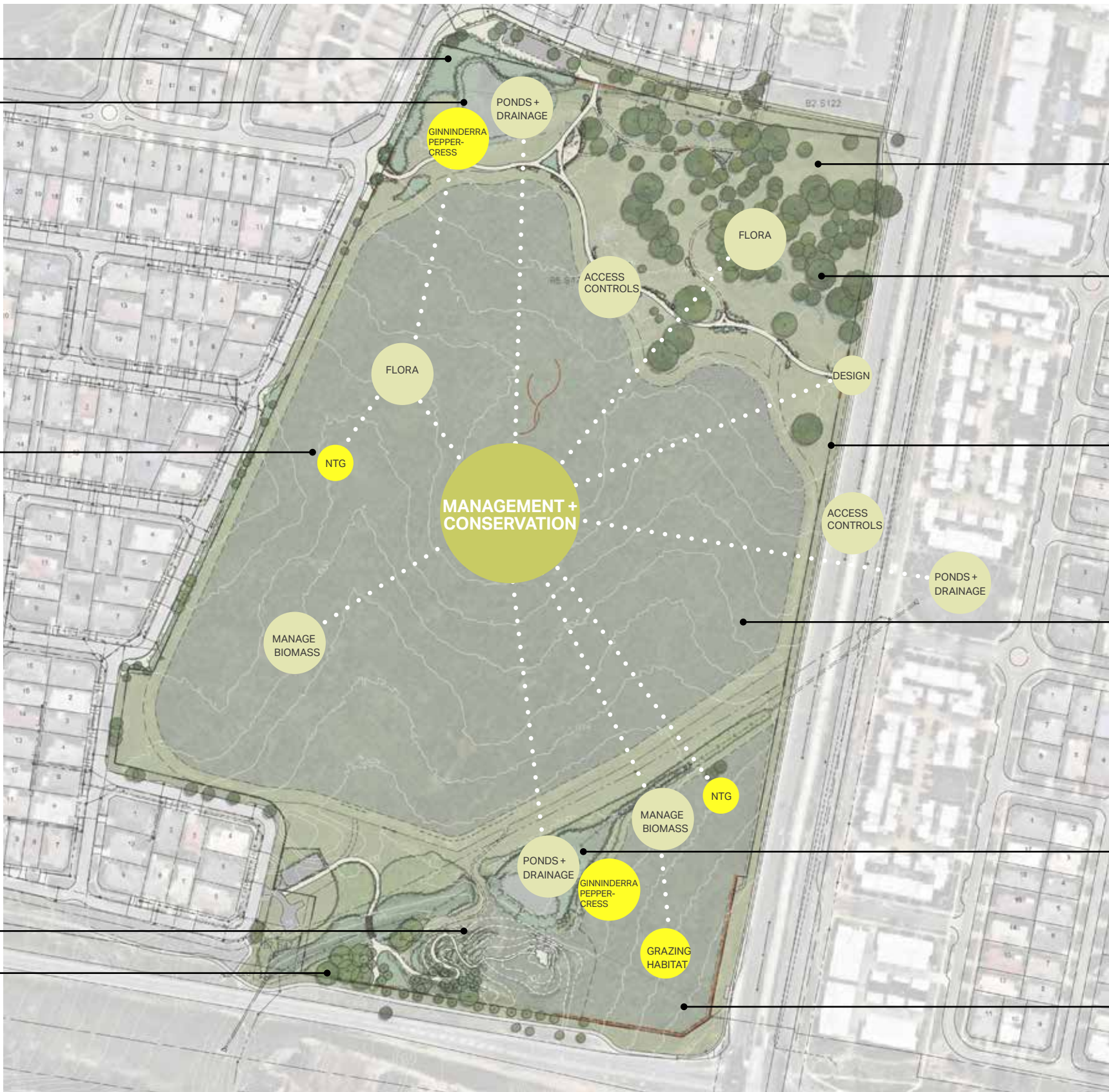
- FENCING ARRANGEMENTS AND ACCESS TO ALLOW FOR FLEXIBLE MANAGEMENT OPTIONS EG BURNING AND SLASHING.

PONDS AND DRAINAGE LINE

- RETAIN VEGETATED SWALES ALONG LENGTH TO CLEAN URBAN RUNOFF
- ENHANCE WETLAND – WEED MANAGEMENT, HABITAT LOGS / ROCKS AND SUPPLEMENTARY NATIVE PLANTINGS
- INCORPORATE AMENITY WITH VIEWING PLATFORM + BIRD HIDE FOR INTERACTION WITH WETLAND / GRASSLAND

FAUNA PROTECTION

- ACCOMMODATE KANGAROO POPULATION IN SOUTH EAST CORNER BY CREATING A FENCED AREA WITH SEMI PERMEABILITY



redbox design group

02 6280 4949 (tel)
inbox@redboxdesigngroup.com.au

Unit 12/285 Canberra Avenue Fyshwick ACT
PO Box 4575 Kingston ACT 2604

redboxdesigngroup.com.au

FRANKLIN GRASSLANDS

Landscape Response
Stakeholder Workshop #1 - Management + Conservation

1581 18 January 2021



project
1581



sheet
12

issue
02

POTENTIAL PARTNERING

- GRASSLAND TRIALS / PLANTING AREAS (EPHEMERAL WETLANDS AND MOUNDS)
- ARTWORKS – CARVINGS ON PLAY POLES AND STEPPER ROCKS – DESIGNS BY SCHOOL KIDS AND INSTALLED BY LOCAL ARTISTS
- ART COMPETITION FOR SCULPTURE
- INDIGENOUS PLANTINGS IN DEDICATED BEDS FOR BUSH TUCKER
- INDIGENOUS STORY TELLING – ENGRAVINGS IN CORTEN EDGING
- INSTALLATION OF AIR BEE'N'BEES



CUES TO CARE

- NEW FACILITIES WITH CONSIDERED AESTHETICS (CONSISTENT DESIGN LANGUAGE AND MATERIALS)
- DEDICATED PATHWAYS
- SIGNAGE AND INTERPRETATIVE OPPORTUNITIES

CELEBRATING GRASSLAND

- CONTROLLED PUBLIC ACCESS INTO THE SITE, WITH SEATING AND AMENITY TO ENABLE ENGAGEMENT
- SCULPTED MOUNDS AS FEATURE OF SITE ALLOWING GOOD VANTAGE POINT OVER GRASSLAND
- VIEWING PLATFORMS TO ALLOW DIFFERING VIEWPOINTS OF SITE

redbox design group

02 6280 4949 (tel)
inbox@redboxdesigngroup.com.au
Unit 12/285 Canberra Avenue Fyshwick ACT
PO Box 4575 Kingston ACT 2604
redboxdesigngroup.com.au

FRANKLIN GRASSLANDS
Landscape Response
Stakeholder Workshop #1 - Community Engagement + Education
1581 18 January 2021

FRANKLIN RESIDENTS

- UPGRADED PARKLAND WILL ENCOURAGE GREATER SENSE OF PRIDE AND CARE IN AREA
- SURVEILLANCE INTO SITE RETAINED

SCHOOLS

- PROVISION OF FACILITIES AND AMENITIES ALLOWS FOR GROUP GATHERINGS / INFORMAL TEACHING / EXCURSIONS
- PROMPTS TO EDUCATION SUCH AS ROCK / POLE CARVINGS / STORIES AND MARKINGS IN CORTEN EDGINGS AND ARTWORKS ETC



GENERAL PUBLIC

- EXTERNAL SIGNAGE WILL PROMOTE AWARENESS OF GRASSLANDS
- NEW PATHS AND AMENITIES WILL ENABLE ACCESS AND ENJOYMENT OF SITE
- SMALL PLAYFUL INTERVENTIONS WILL ENCOURAGE VISITATION AND ENGAGEMENT (VIEWING PLATFORMS / MOUNDS / STEPPER PATHS AND PLAY POLES)

TRADITIONAL OWNERS

- OPPORTUNITIES TO COLLABORATE ON MANAGEMENT OF GRASSLAND
- INTEGRATE STORIES INTO LANDSCAPE WORKS EG STORY TELLING/ LANGUAGE IN CORTEN EDGING
- COLLABORATION IN ARTWORKS SUCH AS POLE CARVINGS
- BUSH TUCKER PLANTS IN NEW PLANTING AREAS

LAND MANAGERS

- CONSOLIDATED FEATURES AND AMENITY TO DISCOURAGE ACCESS INTO SENSITIVE GRASSLAND AREAS
- MAINTENANCE ACCESS GATES SITED TO ENABLE EASY ACCESS INTO SITE
- RETAIN FENCED BOUNDARY AND FENCED EASEMENT TO DEFINE AREAS

redbox design group

02 6280 4949 (tel)
inbox@redboxdesigngroup.com.au

Unit 12/285 Canberra Avenue Fyshwick ACT
PO Box 4575 Kingston ACT 2604

redboxdesigngroup.com.au

FRANKLIN GRASSLANDS
Landscape Response
Stakeholder Workshop #1 - Access + Behaviour
1581 18 January 2021

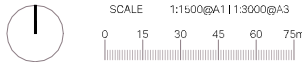


LEGEND

- EXISTING TREES RETAINED
- NEW TREES
- PLANTING BEDS WITH NATIVE GRASSLAND SPECIES
- GRAVEL PATHS
- SEATING

KEY - NORTH

- (A) NATURAL TEMPERATE GRASSLAND
- (B) BOX GUM WOODLAND
- (C) WETLAND
- (D) EPHEMERAL WETLAND
- (E) MOWN FIRE ABATEMENT TRACK
- (F) PUBLIC ACCESS GRAVEL PATHS + MOWN TRAILS
- (G) PEDESTRIAN ENTRY WITH SIGNAGE
- (H) MAINTENANCE GATES, NEW AND EXISTING
- (I) REMOVED ACCESS GATE
- (J) PEDESTRIAN ACCESS GAP IN FENCE
- (K) NEW FENCE ALIGNMENT
- (L) REMOVE EXISTING FENCE
- (M) POTENTIAL GRAVEL AREA FOR CARPARKING
- (N) BUFFER PLANTING + GRAVEL WEED SUPPRESSION ALONG WESTERN EDGE
- (O) NEW FRANKLIN GRASSLAND FENCE SIGNAGE



*Level of accuracy of information included in plans, mappings and images variable as produced without survey.

redbox design group

02 6280 4949 (tel)
inbox@redboxdesigngroup.com.au
Unit 12/285 Canberra Avenue Fyshwick ACT
PO Box 4575 Kingston ACT 2604
redboxdesigngroup.com.au

FRANKLIN GRASSLANDS
Landscape Plan
Context
1581 18 January 2021





- KEY - NORTH
- 1 PEDESTRIAN ENTRY FROM FLEMINGTON ROAD
 - 2 PEDESTRIAN ENTRY FROM RESIDENTIAL ROADS
 - 3 NATIVE BUFFER PLANTING AND GRAVEL RESURFACING FOR WEED SUPPRESSION ALONG VERGE
 - 4 STANDARD ACT PARKS SIGNAGE
 - 5 POTENTIAL CARPARKING AREAS
 - 6 MAINTENANCE GATES, EXISTING AND NEW
 - 7 DIVERT DRAINAGE SWALE TO DIRECT RUNOFF INTO EPHEMERAL WETLAND
 - 8 NEW FENCE ALIGNMENT ON BOUNDARY ADJUSTMENT TO EXISTING DRAINAGE SWALE MAY BE REQUIRED
 - 9 RETAIN EXISTING ENTRY AS INFORMAL ACCESS POINT
 - 10 MOWN INFORMAL PATHS THROUGH WOODLAND
 - 11 INTERMITTENT RAISED EDGE PLANTING BEDS TO ENCOURAGE PEDESTRIAN MOVEMENT ALONG PATHWAYS. OPPORTUNITY TO INCORPORATE ENGRAVED TEXT (ABORIGINAL STORYTELLING, GRASSLAND SPECIES ETC) INTO EDGING MATERIAL. PLANTINGS TO INCLUDE BUSHTUCKER AND FEATURE GRASSLAND SPECIES
 - 12 'BILLY BUTTON' PLAY SPACE WITH INFORMAL SEATING + PLAYFUL MACRO GRASSLAND SCULPTURES
 - 13 LOW RAISED TIMBER PLATFORM TO DEFINE VIEWING / SEATING AREA. BALUSTRADE TO INCLUDE INTERPRETIVE INFORMATION
 - 14 POTENTIAL FOR SCULPTURAL MARKER IN CENTRE OF SITE
 - 15 OPEN AREA FOR POTENTIAL USE IN SEED TRIALS / EXPERIMENTAL PLANTINGS WITH VEHICLE ACCESS FROM WESTERN BOUNDARY
 - 16 EPHEMERAL WETLAND WITH DISCOVERY TRAIL. ENGRAVED ROCK STEPPERS WITH MARKINGS EG PINK TAIL WORM LIZARD / ANIMAL FOOTPRINTS
 - 17 REMOVE EXISTING ACCESS GATE
 - 18 ROCK LAYER TO LIMIT ACCESS TO HIGH QUALITY GRASSLANDS (ADDITIONAL BENEFIT OF HABITAT CREATION)
 - 19 MOWN FIRE ABATEMENT TRACK
 - 20 REMOVE EXISTING FENCE-LINE, REFER # 8

SCALE 1:750@A1 | 1:1500@A3
0 15 30m

* Level of accuracy of information included in plans, mappings and images variable as produced without survey.

redbox design group

02 6280 4949 (tel)
inbox@redboxdesigngroup.com.au
Unit 12/285 Canberra Avenue Fyshwick ACT
PO Box 4575 Kingston ACT 2604
redboxdesigngroup.com.au

FRANKLIN GRASSLANDS
Landscape Plan
North
1581 18 January 2021



KEY - SOUTH

- 19 MOWN FIRE ABATEMENT TRACK
- 20 REMOVE EXISTING FENCE-LINE
- 21 HABITAT PROTECTION FENCE ON CORNER WITH GRASSLAND SIGNAGE
- 22 LOW BARRIERS TO DIRECT PEDESTRIAN ALONG MOWN EDGE TRACK
- 23 RESTRICTED PEDESTRIAN ACCESS EG. PEDESTRIAN STILE / WALK THROUGH GATE TO LIMIT ACCESS INTO HIGH QUALITY GRASSLAND
- 24 MAINTENANCE GATES, EXISTING AND NEW
- 25 POTENTIAL INFORMAL CARPARKING AREA
- 26 EXISTING GPT ACCESS TO BE RETAINED
- 27 NATIVE TREE PLANTINGS TO CREATE A WOODLAND CORNER TO SHADE AND INCREASE HABITAT OPPORTUNITIES FOR SMALL BIRDS
- 28 SCULPTED MOUND WITH ACCESS TO GOLDEN SUN MOTH VIEWING PLATFORM OVER HIGH QUALITY GRASSLAND AND ADJACENT WETLAND. OPPORTUNITY TO INCLUDE INTERPRETIVE INFORMATION ON BROADER CONTEXT OF SITE. MOUNDS TO INCLUDE PLANTINGS OF MASS GRASSLAND SPECIES AND ROCK MULCHES.
- 29 MAIN SOUTHERN PEDESTRIAN ENTRY FROM WELLS STATION ROAD
- 30 STANDARD ACT PARKS SIGNAGE INSIDE ENTRY
- 31 ENHANCED WETLAND AREA INCORPORATING ROCKS / LOGS FOR HABITAT CREATION



* Level of accuracy of information included in plans, mappings and images variable as produced without survey.

redbox design group

02 6280 4949 (tel)
inbox@redboxdesigngroup.com.au

Unit 12/285 Canberra Avenue Fyshwick ACT
PO Box 4575 Kingston ACT 2604

redboxdesigngroup.com.au

FRANKLIN GRASSLANDS

Landscape Plan

South

1581 18 January 2021

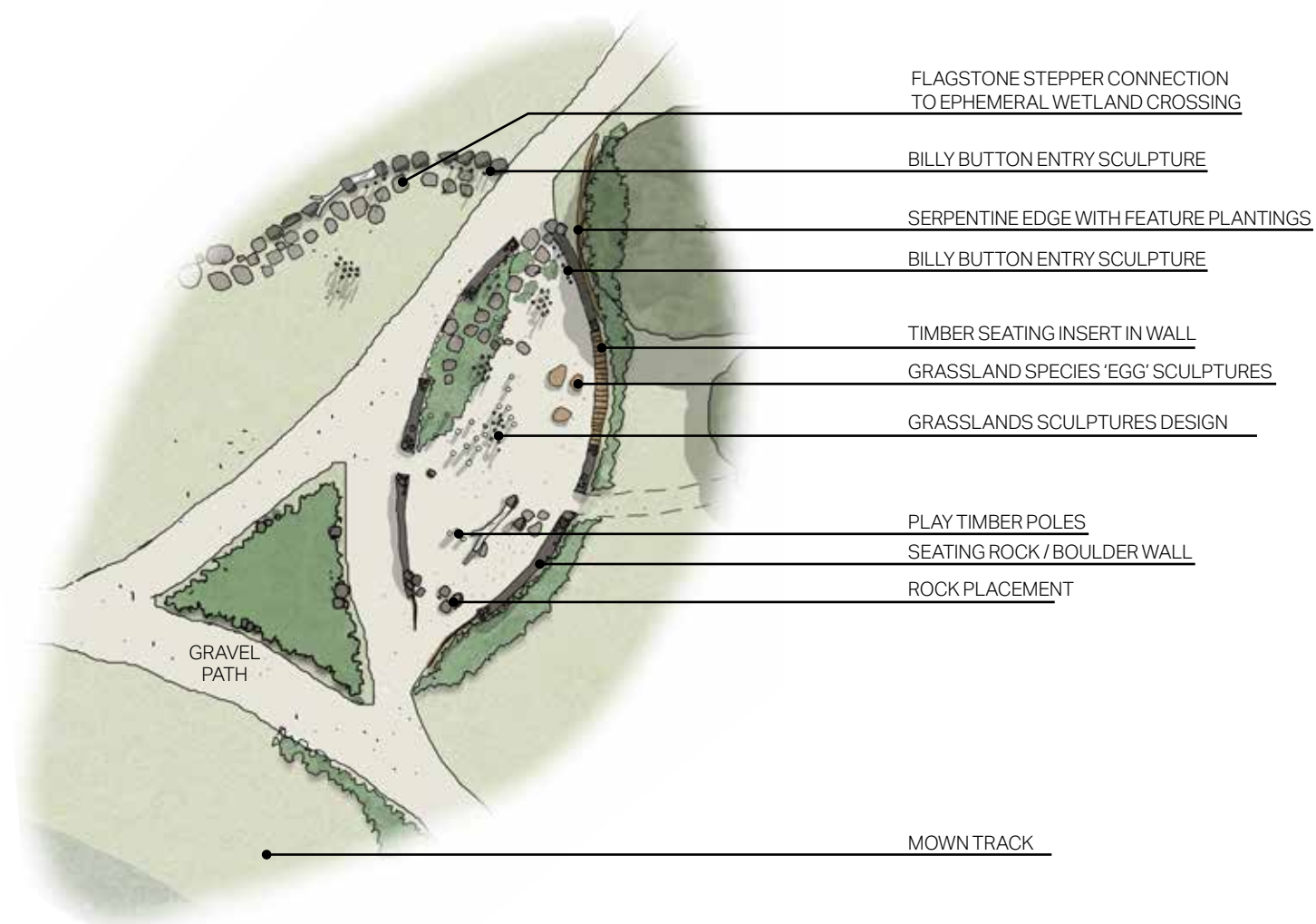


project
1581



sheet
17

issue
02



DETAIL AREA A
BILLY BUTTON PLAY SPACE

SCALE 1:100@A1 | 1:200@A3
0 1 2 3 4 5m

redbox design group

02 6280 4949 (tel)
inbox@redboxdesigngroup.com.au
Unit 12/285 Canberra Avenue Fyshwick ACT
PO Box 4575 Kingston ACT 2604
redboxdesigngroup.com.au

FRANKLIN GRASSLANDS

Landscape Plan
Billy Button Play Space
1581 21 August 2020



project
1581



sheet
18
issue
01



DETAIL AREA A
BILLY BUTTON PLAY SPACE

redbox design group

02 6280 4949 (tel)
inbox@redboxdesigngroup.com.au
Unit 12/285 Canberra Avenue Fyshwick ACT
PO Box 4575 Kingston ACT 2604
redboxdesigngroup.com.au

FRANKLIN GRASSLANDS
Landscape Plan
Billy Button Play Space Artists Impression
1581 21 August 2020



redbox design group

02 6280 4949 (tel)
inbox@redboxdesigngroup.com.au
Unit 12/285 Canberra Avenue Fyshwick ACT
PO Box 4575 Kingston ACT 2604
redboxdesigngroup.com.au

FRANKLIN GRASSLANDS
Landscape Plan
Billy Button Play Space Artists Impression
1581 21 August 2020

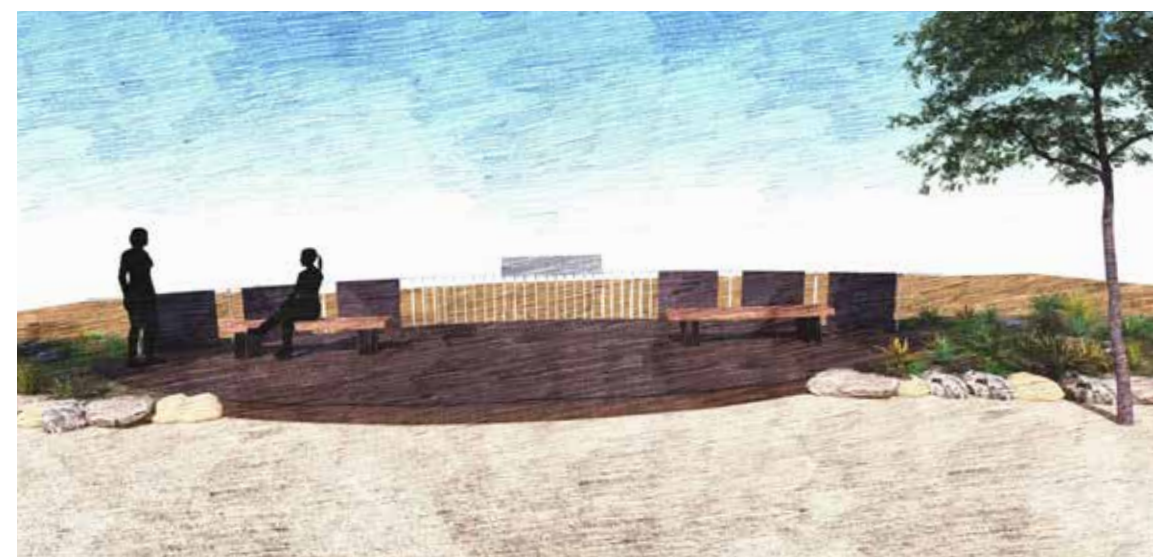
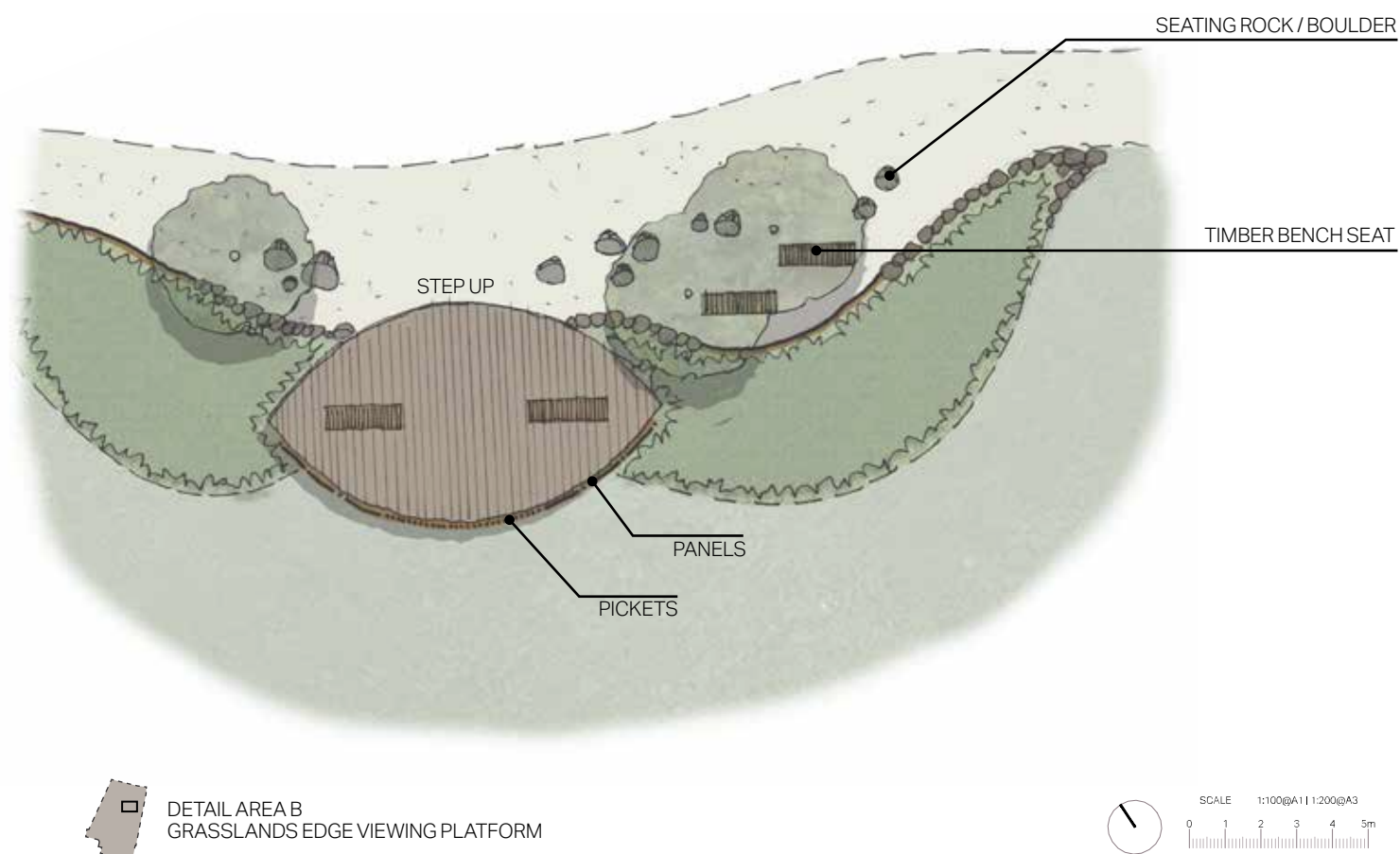


ACT
Government

project
1581



sheet
20
issue
01




redbox design group

02 6280 4949 (tel)
inbox@redboxdesigngroup.com.au
Unit 12/285 Canberra Avenue Fyshwick ACT
PO Box 4575 Kingston ACT 2604
redboxdesigngroup.com.au

FRANKLIN GRASSLANDS
Landscape Plan
Grasslands Edge Viewing Platform
1581 21 August 2020




 DETAIL AREA B
 GRASSLANDS EDGE VIEWING PLATFORM

redbox design group

02 6280 4949 (tel)
 inbox@redboxdesigngroup.com.au
 Unit 12/285 Canberra Avenue Fyshwick ACT
 PO Box 4575 Kingston ACT 2604
 redboxdesigngroup.com.au

FRANKLIN GRASSLANDS
 Landscape Plan
 Grasslands Edge Viewing Platform Artist Impression
 1581 21 August 2020

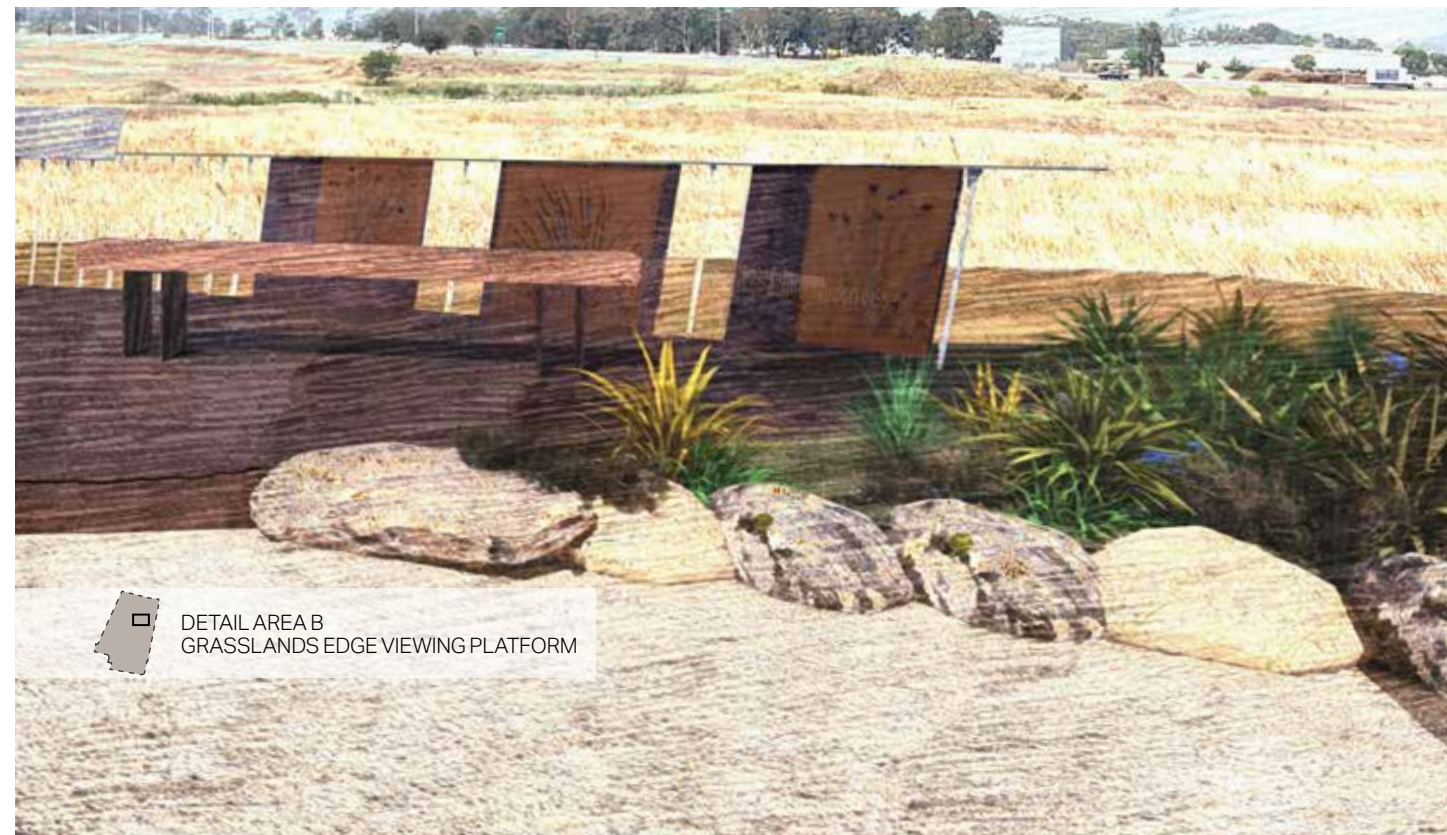


ACT
Government

project
 1581



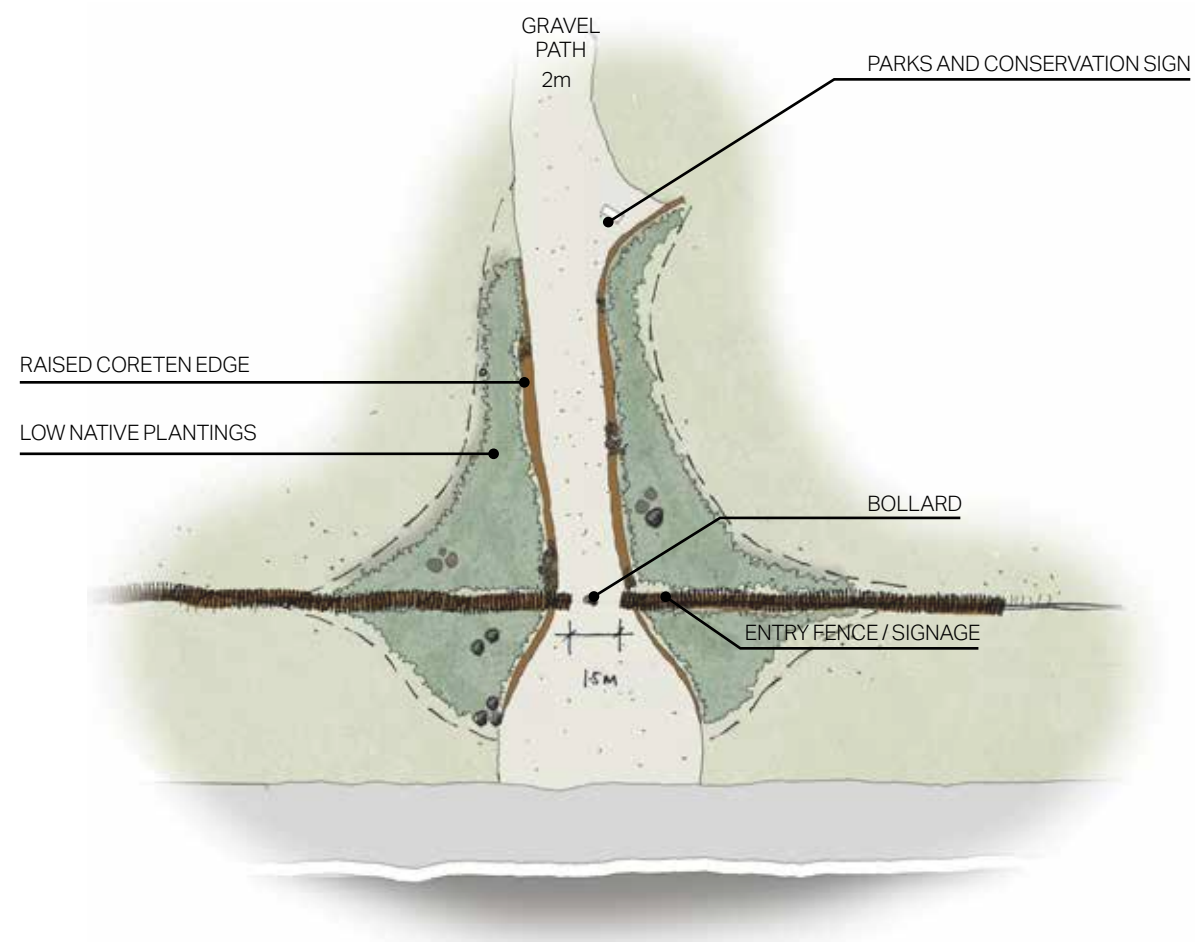
sheet
 22
 issue
 01



redbox design group

02 6280 4949 (tel)
inbox@redboxdesigngroup.com.au
Unit 12/285 Canberra Avenue Fyshwick ACT
PO Box 4575 Kingston ACT 2604
redboxdesigngroup.com.au

FRANKLIN GRASSLANDS
Landscape Plan
Grasslands Edge Viewing Platform Artist Impression
1581 21 August 2020



DETAIL AREA C
FLEMINGTON ROAD PEDESTRIAN ENTRY

SCALE 1:100@A1 | 1:200@A3
0 1 2 3 4 5m



PLANTING BED CONCEPT



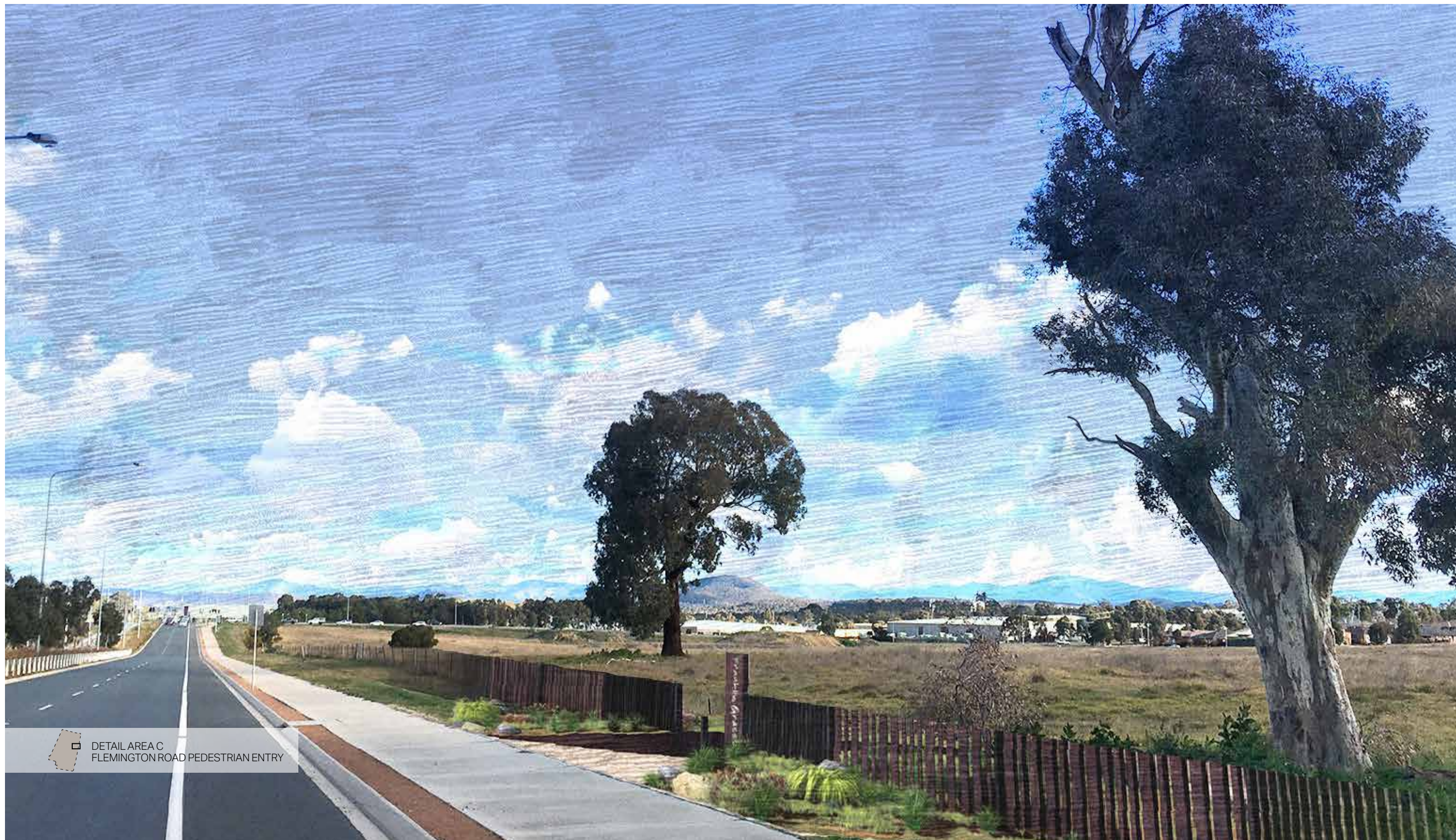
redbox design group

02 6280 4949 (tel)
inbox@redboxdesigngroup.com.au
Unit 12/285 Canberra Avenue Fyshwick ACT
PO Box 4575 Kingston ACT 2604
redboxdesigngroup.com.au

FRANKLIN GRASSLANDS
Landscape Plan
Flemington Road Pedestrian Entry
1581 21 August 2020

ACT
Government
project
1581

ACT
Parks and Conservation Service
sheet
24
issue
01




 DETAIL AREA C
 FLEMINGTON ROAD PEDESTRIAN ENTRY

redbox design group

02 6280 4949 (tel)
 inbox@redboxdesigngroup.com.au
 Unit 12/285 Canberra Avenue Fyshwick ACT
 PO Box 4575 Kingston ACT 2604
 redboxdesigngroup.com.au

FRANKLIN GRASSLANDS
 Landscape Plan
 Flemington Road Entry Artists Impression
 1581 21 August 2020


ACT
 Government
 project
 1581

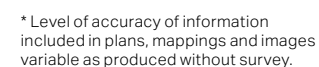

 sheet
 25
 issue
01



redbox design group

02 6280 4949 (tel)
inbox@redboxdesigngroup.com.au
Unit 12/285 Canberra Avenue Fyshwick ACT
PO Box 4575 Kingston ACT 2604
redboxdesigngroup.com.au

FRANKLIN GRASSLANDS
Landscape Plan
Flemington Road Entry Artists Impressions
1581 21 August 2020






 DETAIL AREA D
 MOUND VIEWING PLATFORM

redbox design group

02 6280 4949 (tel)
 inbox@redboxdesigngroup.com.au
 Unit 12/285 Canberra Avenue Fyshwick ACT
 PO Box 4575 Kingston ACT 2604
 redboxdesigngroup.com.au

FRANKLIN GRASSLANDS
 Landscape Plan
 Mound Viewing Platform Artists Impression
 1581 21 August 2020



redbox design group

02 6280 4949 (tel)
 inbox@redboxdesigngroup.com.au
 Unit 12/285 Canberra Avenue Fyshwick ACT
 PO Box 4575 Kingston ACT 2604
 redboxdesigngroup.com.au

FRANKLIN GRASSLANDS
 Landscape Plan
 Mound Viewing Platform Artists Impressions
 1581 21 August 2020



ACT
 Government

project
 1581



sheet
 29

issue
 01



DETAIL AREA E
KANGAROO PROTECTION FENCE

redbox design group

02 6280 4949 (tel)
inbox@redboxdesigngroup.com.au
Unit 12/285 Canberra Avenue Fyshwick ACT
PO Box 4575 Kingston ACT 2604
redboxdesigngroup.com.au

FRANKLIN GRASSLANDS
Landscape Plan
Key Corner Signage + Habitat Protection Fence
1581 21 August 2020

 **ACT**
Government
project
1581

 **01**
sheet
30

ENTRY + FENCING ELEMENTS



REST AREAS



ACCESS | EDGING | BARRIER



redbox design group

02 6280 4949 (tel)
inbox@redboxdesigngroup.com.au
Unit 12/285 Canberra Avenue Fyshwick ACT
PO Box 4575 Kingston ACT 2604
redboxdesigngroup.com.au

FRANKLIN GRASSLANDS
Landscape Plan
Materials - Inspiration
1581 21 August 2020

SCULPTURE



VIEWING AREAS



redbox design group

02 6280 4949 (tel)
inbox@redboxdesigngroup.com.au
Unit 12/285 Canberra Avenue Fyshwick ACT
PO Box 4575 Kingston ACT 2604
redboxdesigngroup.com.au

FRANKLIN GRASSLANDS
Landscape Plan
Materials - Inspiration
1581 21 August 2020

HABITAT CREATION



DISCOVERY | NATURE PLAY | COMMUNITY ART



redbox design group

02 6280 4949 (tel)
inbox@redboxdesigngroup.com.au
Unit 12/285 Canberra Avenue Fyshwick ACT
PO Box 4575 Kingston ACT 2604
redboxdesigngroup.com.au

FRANKLIN GRASSLANDS
Landscape Plan
Materials - Indicative Images
1581 21 August 2020