

A picture of disability in the ACT

In the ACT there are 80,000 people with disability

This is **19.4%** of the ACT population, which is around **1 in 5** people ●



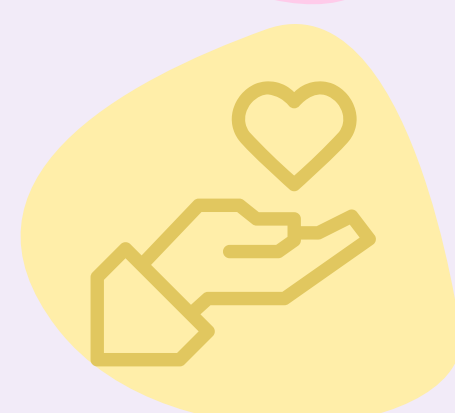
Many people with disability work, volunteer and take part in community



27.7% have volunteered within the past 12 months ★



36.8% regularly participate in community activities such as events, festivals, hobby and community groups ★

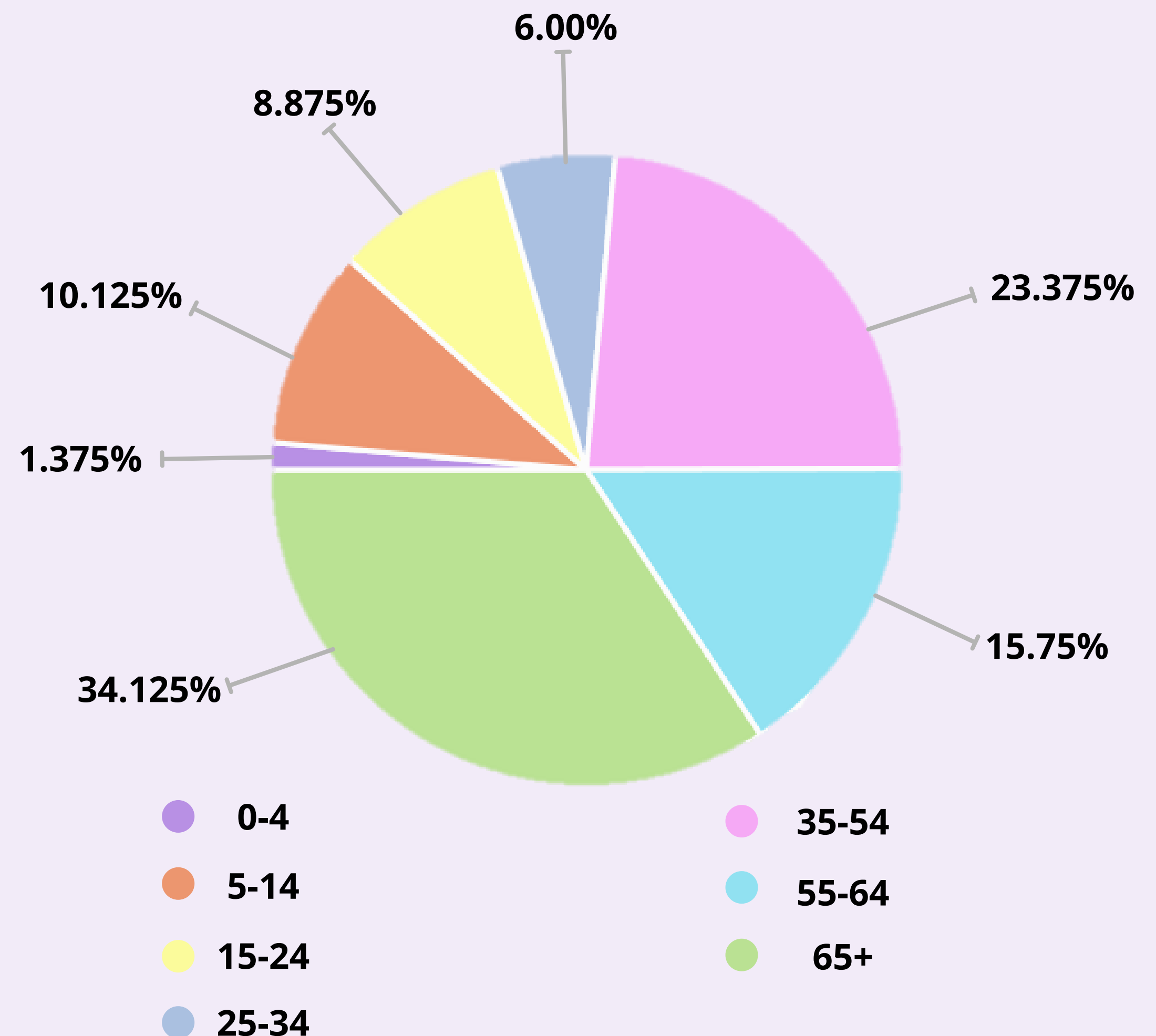


18.7% are a carer for another person ★



40.7% are employed in paid work ★

Age Breakdown



65.9% of people with disability in the ACT are under the age of 65 ●

A picture of disability in the ACT

Despite this positive contribution, people with disability are negatively impacted by community attitudes

59.6% of people with disability are economically disadvantaged



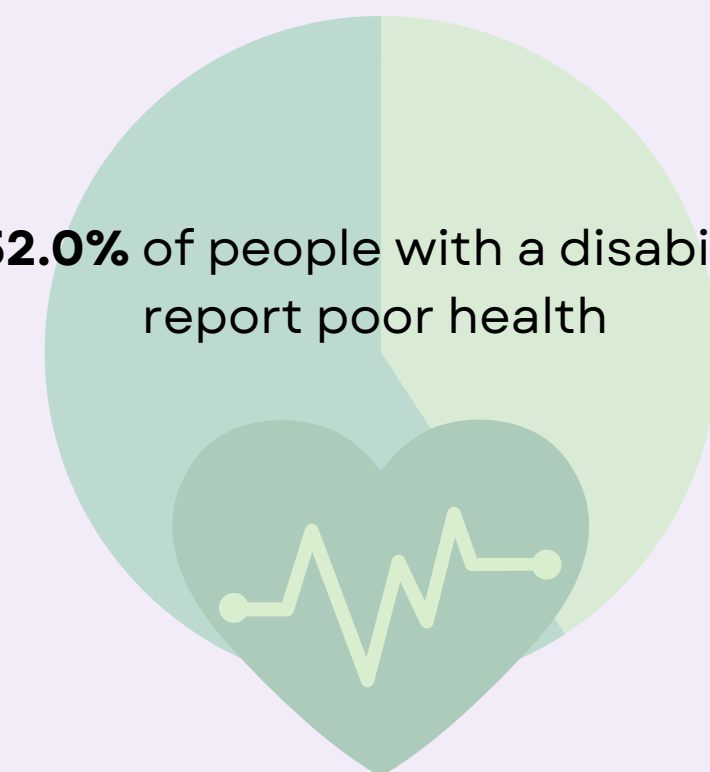
The average income of a person with disability is **\$700** a fortnight, compared to **\$1343** a fortnight for people without disability ●



When asked their satisfaction with feeling a part of community people with a disability have reported an average of **5.1** out of **10** on the wellbeing index ★



52.0% of people with a disability report poor health



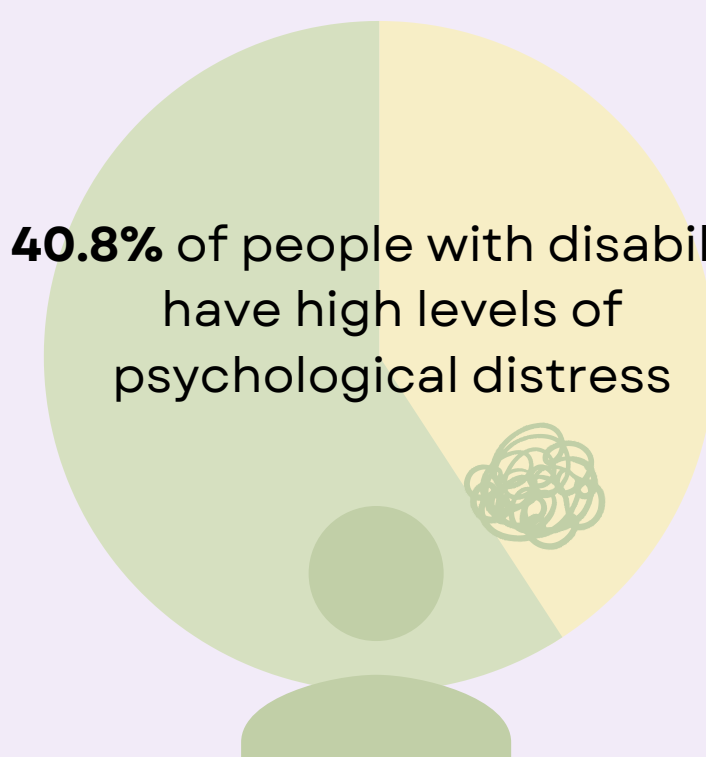
compared to **19.6%** of people with no disability ★

36.3% of people with disability experience financial distress



compared to **16.0%** of people with no disability ★

40.8% of people with disability have high levels of psychological distress



compared to **7.6%** of people with no disability ★