



## DRAWING LIST

- L01 Site Plan
- L02 Bartlett Place Crossing
- L03 College Walk
- L04 College Walk Cross Sections
- L05 Boardwalk
- L06 Reed St South
- L07 Reed St South Cross Section
- L08 Town Park Playground Upgrade
- L09 Town Park Public Toilet Upgrade
- L10 Material Palette - Surfaces and Finishes
- L11 Material Palette - Furniture
- L12 Material Palette - Walls and Miscellaneous
- L13 Planting Palette

# TUGGERANONG FORESHORE IMPROVEMENTS →

PRELIMINARY SKETCH PLAN (PSP) REV B  
29 AUGUST 2022

**PLACE  
LAB**

### Lead Consultant

PLACE Laboratory  
Place Laboratory Pty Ltd (as  
trustee for The Lab Unit Trust)  
ABN 24 169 889 699

### Consultants

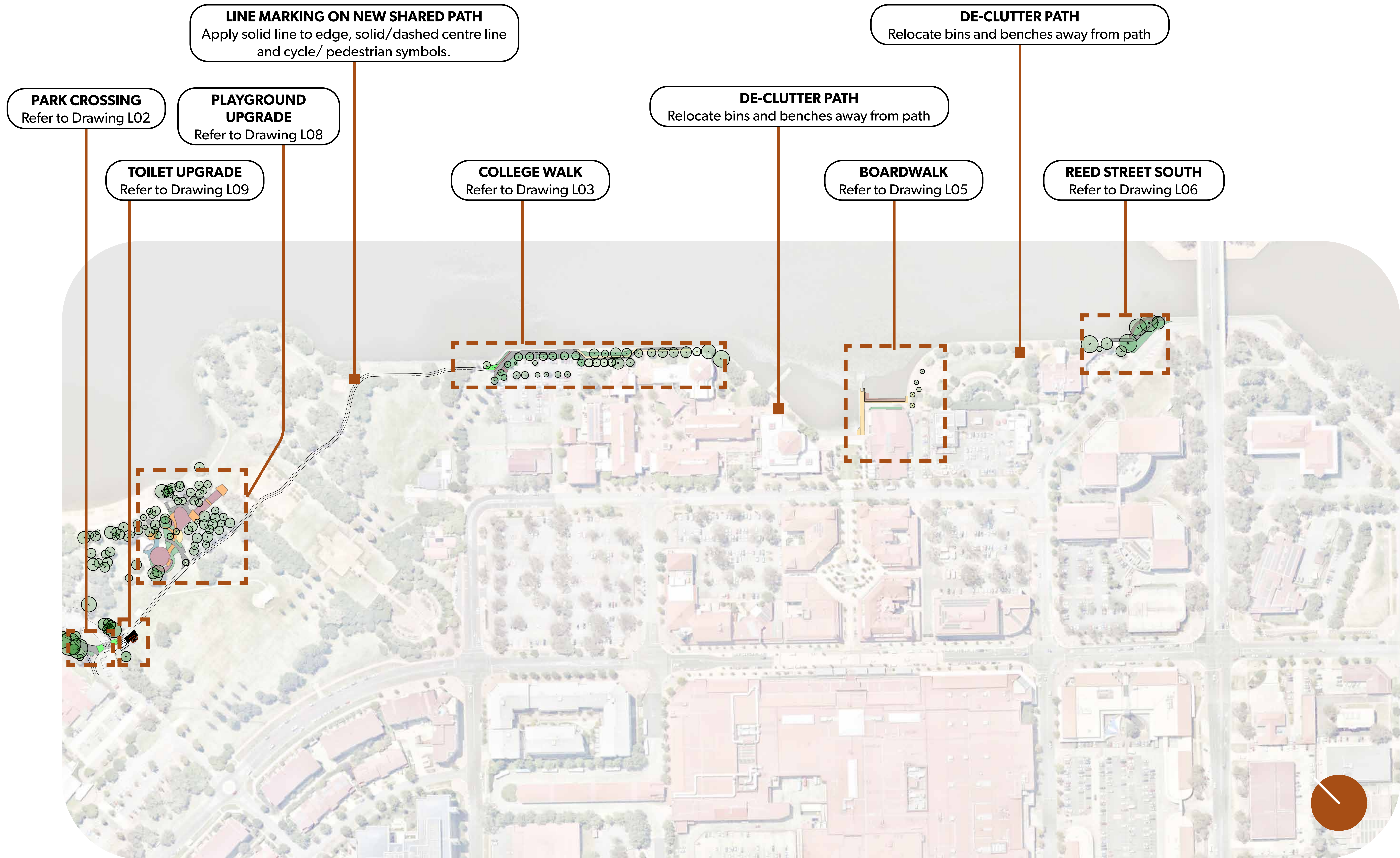
HARRIS HOBBS  
LANDSCAPES

**wsp**

### Client







**Lead Consultant**  
PLACE Laboratory  
Place Laboratory Pty Ltd (as trustee for The Lab Unit Trust)  
ABN 24 169 889 699

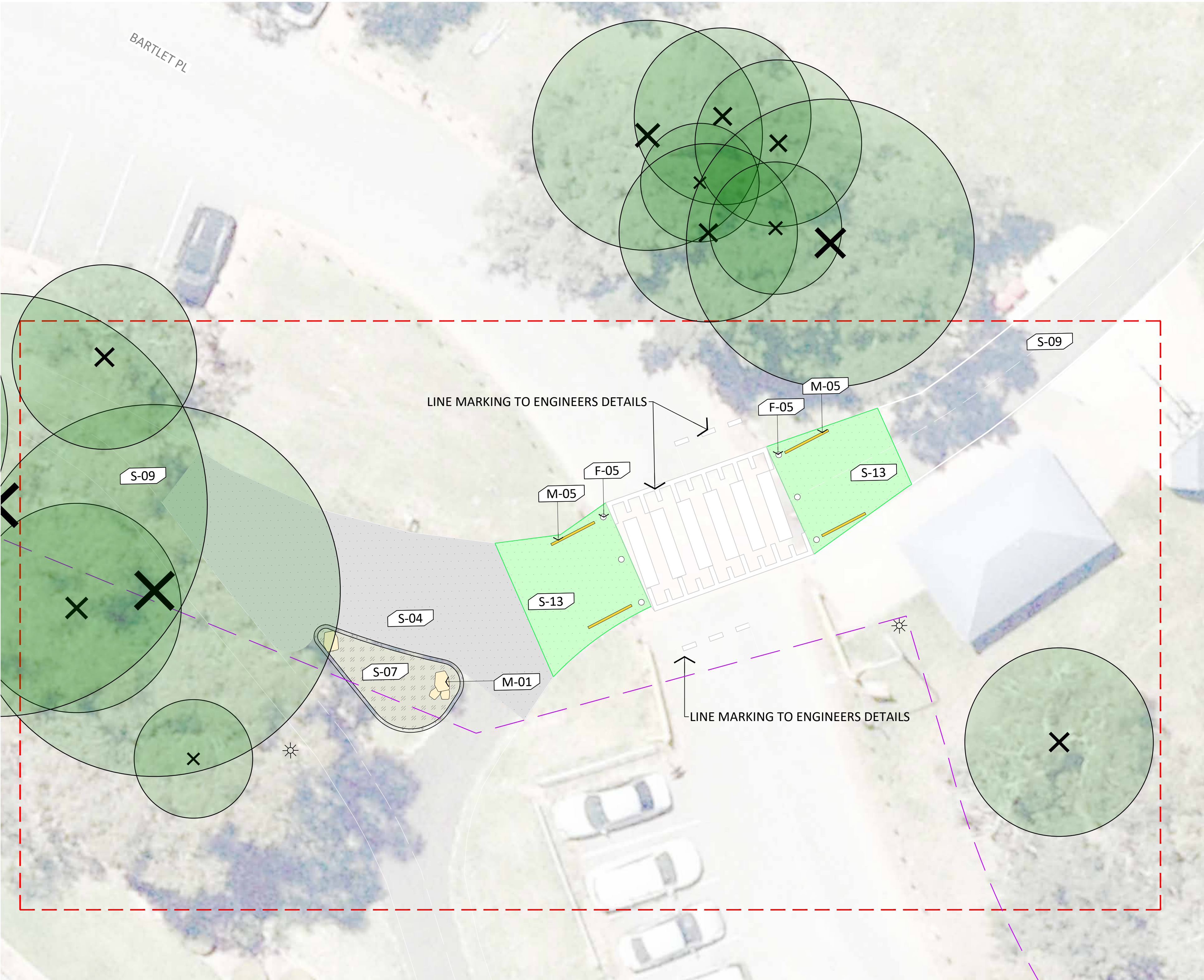
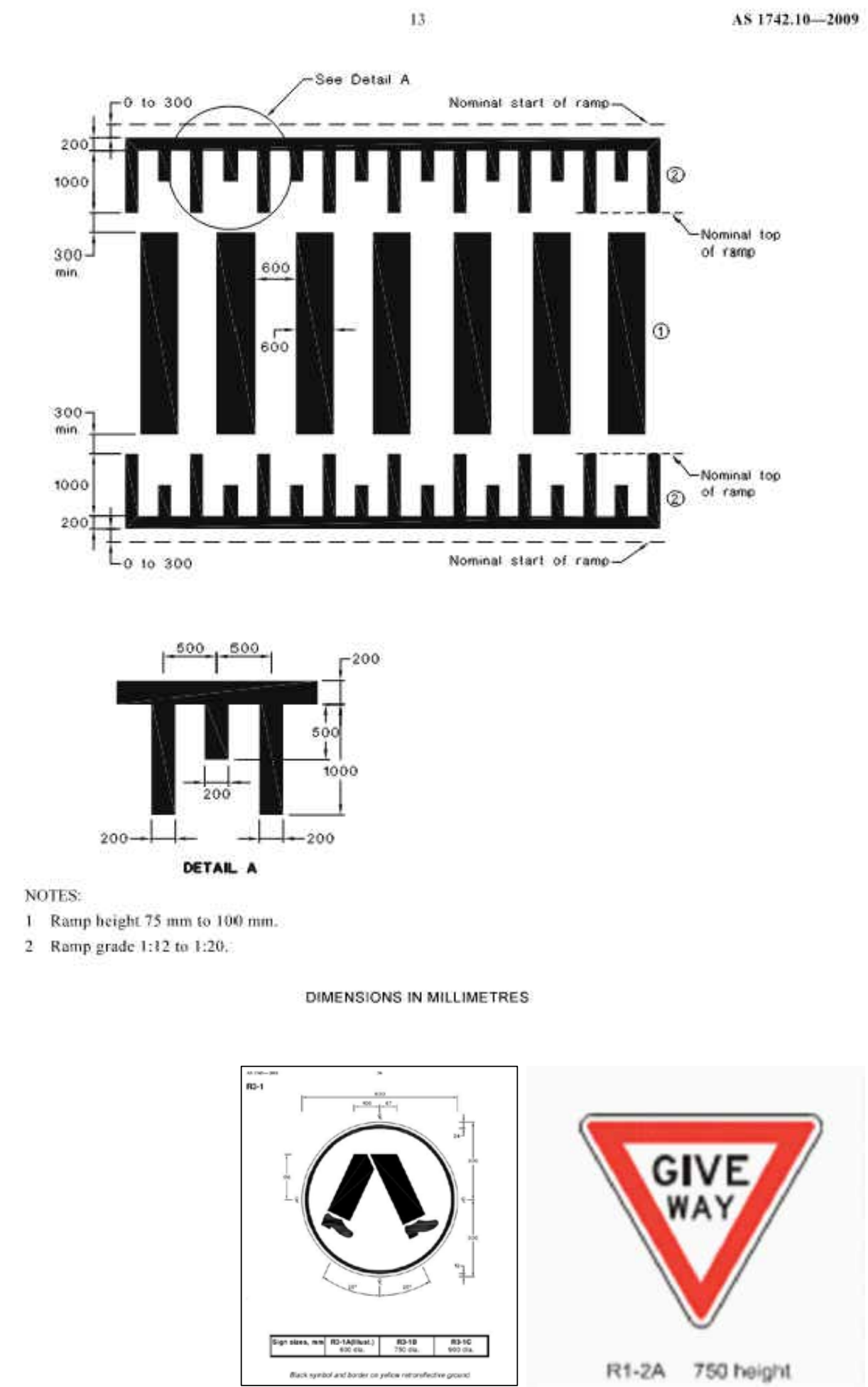


**Project**  
**TUGGERANONG  
FORESHORE  
IMPROVEMENTS**

| Revision |                       |          |    |
|----------|-----------------------|----------|----|
| A        | Issue for Information | 25/08/22 | AC |
| B        | Issue for Information | 29/08/22 | AC |
|          |                       |          |    |
|          |                       |          |    |
|          |                       |          |    |

| Drawing Title           |                |     |
|-------------------------|----------------|-----|
| SITE PLAN               |                |     |
| Status                  |                |     |
| PRELIMINARY SKETCH PLAN |                |     |
| Project Number          | Drawing Number | Rev |
| 2169                    | L01            | B   |





## LANDSCAPE LEGEND

- SITE BOUNDARY
- EXTENT OF WORKS

## MISCELLANEOUS

- M-01 SANDSTONE BLOCKS
- M-02 PRECAST CONCRETE STEPPER
- M-05 BIKE GRAB RAIL
- M-06 PLAYWORKS TALK TUBE
- M-07 RECLAIMED TIMBER KERB BLOCK

## SURFACE FINISHES

- S-01 INSITU CONCRETE PAVING
- S-02 FEATURE PAVING, INSITU CONCRETE WITH INTEGRAL COLOUR OXIDE
- S-03 CONCRETE PATTERN
- S-04 ASPHALT CONCRETE
- S-05 COMPACTED GRAVEL
- S-06 BRICK PAVING TO MATCH EXISTING
- S-07 GARDEN BED
- S-08 STEEL EDGE
- S-09 LINE MARKING
- S-10 RECLAIMED TIMBER BOARDWALK
- S-11 FLEXIBLE POROUS PAVING
- S-12 MICROMESH
- S-13 CYCLE PATH PAINT
- S-20 GRASS

## FURNITURE ELEMENTS

- F-01A LINEA PLATFORM BENCH (BACK REST)
- F-03 CUSTOM SEAT WITH RECLAIMED TIMBER
- F-04A EXISTING REUSED BENCH
- F-04B BENCH WITH RECLAIMED TIMBER
- F-05 REMOVABLE BOLLARD
- F-22 PERGOLA

## WALLS

- W-01 LOW STONE CLAD WALL

## PLANTING

- EXISTING TREE
- PROPOSED TREE

## LIGHTING

- EXISTING LUMINAIRE AND COLUMN
- PROPOSED SINGLE HEADED LUMINAIRE AND COLUMN
- PROPOSED PE CELL

PLACE  
LAB

### Lead Consultant

PLACE Laboratory  
Place Laboratory Pty Ltd (as trustee for The Lab Unit Trust)  
ABN 24 169 889 699

### Consultants



### Client



### Project

TUGGERANONG  
FORESHORE  
IMPROVEMENTS

### Revision

|   |                       |          |    |
|---|-----------------------|----------|----|
| A | Issue for Information | 25/08/22 | AC |
| B | Issue for Information | 29/08/22 | AC |

### Drawing Title

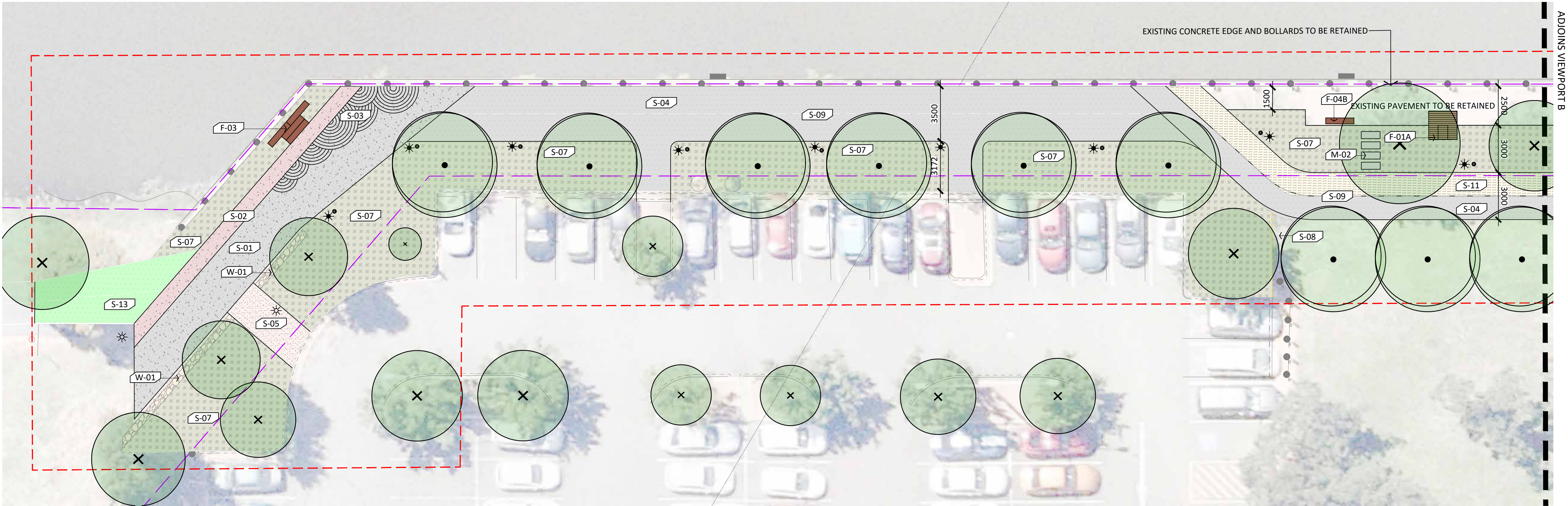
BARTLET PL CROSSING

### Status

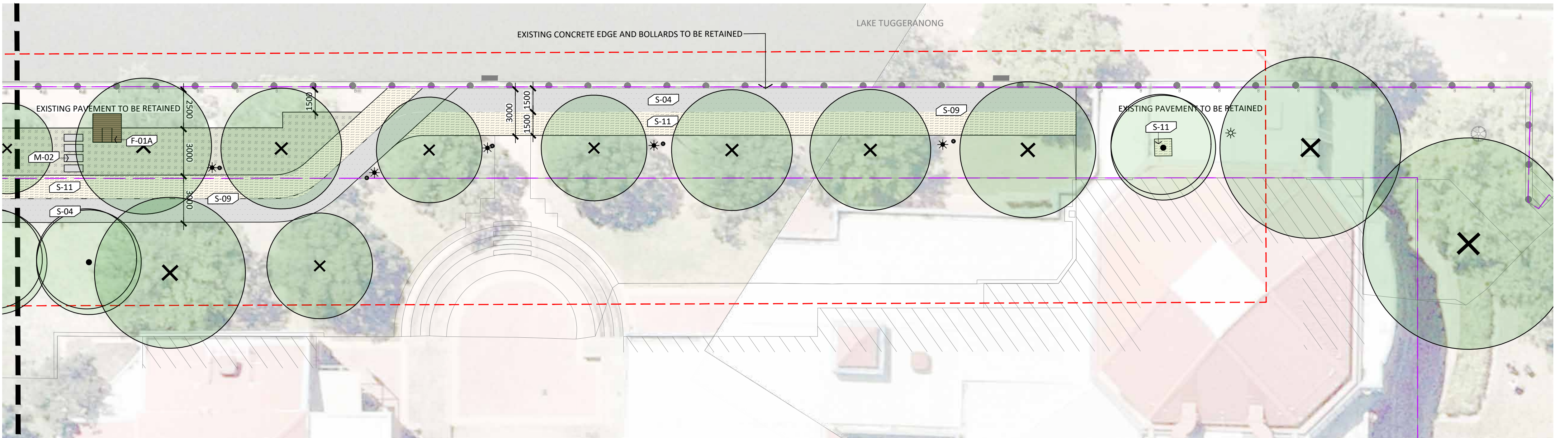
PRELIMINARY SKETCH PLAN

| Project Number | Drawing Number | Rev |
|----------------|----------------|-----|
| 2169           | L02            | B   |





VIEWPORT A



#### LANDSCAPE LEGEND

- SITE BOUNDARY
- EXTENT OF WORKS

#### MISCELLANEOUS

- M-01 SANDSTONE BLOCKS
- M-02 PRECAST CONCRETE STEPPER
- M-05 BIKE GRAB RAIL
- M-06 PLAYWORKS TALK TUBE
- M-07 RECLAIMED TIMBER KERB BLOCK

#### SURFACE FINISHES

- S-01 INSITU CONCRETE PAVING
- S-02 FEATURE PAVING, INSITU CONCRETE WITH INTEGRAL COLOUR OXIDE
- S-03 CONCRETE PATTERN
- S-04 ASPHALT CONCRETE
- S-05 COMPACTED GRAVEL
- S-06 BRICK PAVING TO MATCH EXISTING
- S-07 GARDEN BED
- S-08 STEEL EDGE
- S-09 LINE MARKING
- S-10 RECLAIMED TIMBER BOARDWALK
- S-11 FLEXIBLE POROUS PAVING
- S-12 MICROMESH
- S-13 CYCLE PATH PAINT
- S-20 GRASS

#### FURNITURE ELEMENTS

- F-01A LINEA PLATFORM BENCH (BACK REST)
- F-03 CUSTOM SEAT WITH RECLAIMED TIMBER
- F-04A EXISTING REUSED BENCH
- F-04B BENCH WITH RECLAIMED TIMBER
- F-05 REMOVABLE BOLLARD
- F-22 PERGOLA

#### WALLS

- W-01 LOW STONE CLAD WALL

#### PLANTING

- EXISTING TREE
- PROPOSED TREE

#### LIGHTING

- EXISTING LUMINAIRE AND COLUMN
- PROPOSED SINGLE HEADED LUMINAIRE AND COLUMN
- PROPOSED PE CELL



**Lead Consultant**  
PLACE Laboratory  
Place Laboratory Pty Ltd (as trustee for The Lab Unit Trust)  
ABN 24 169 889 699

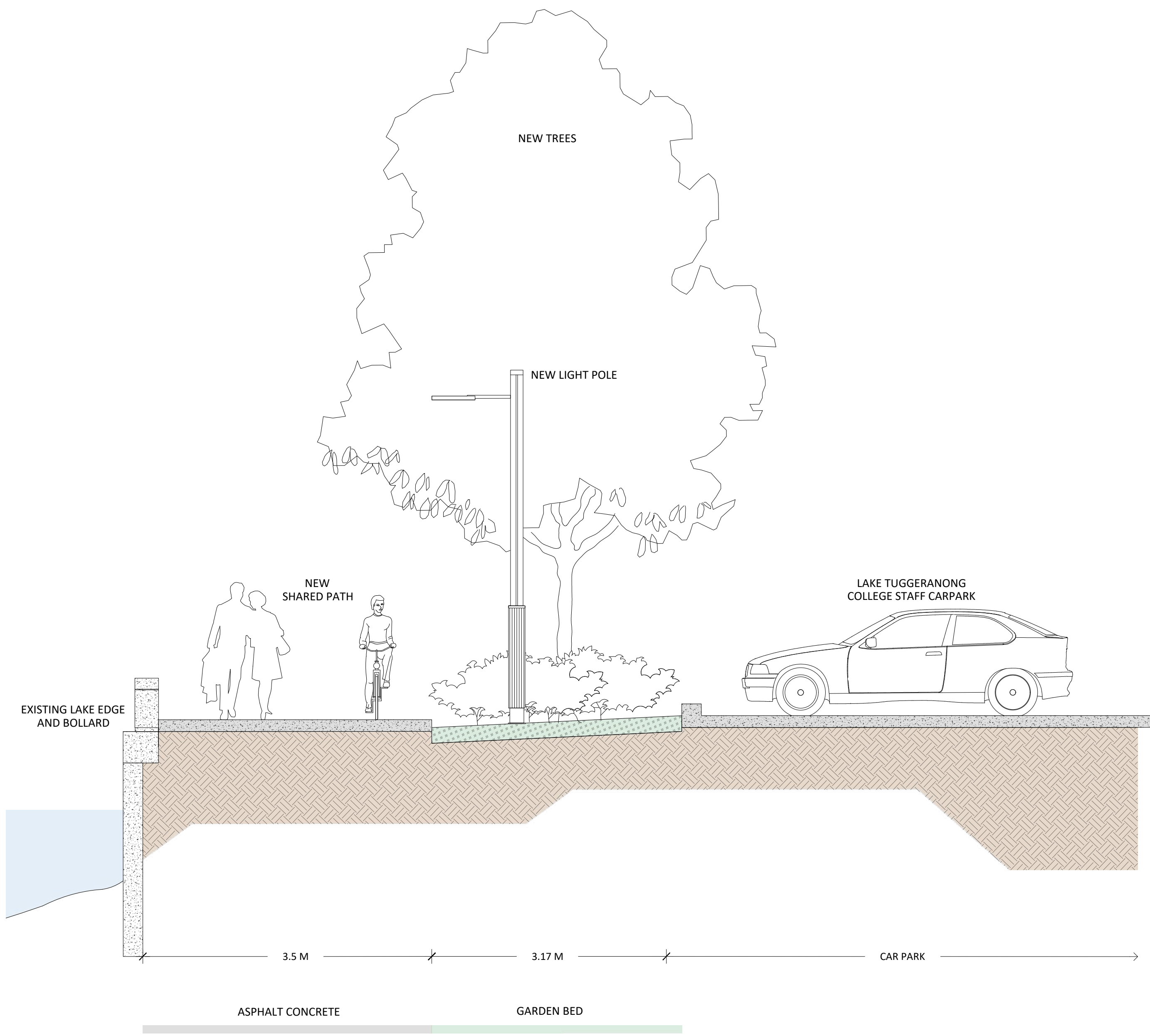
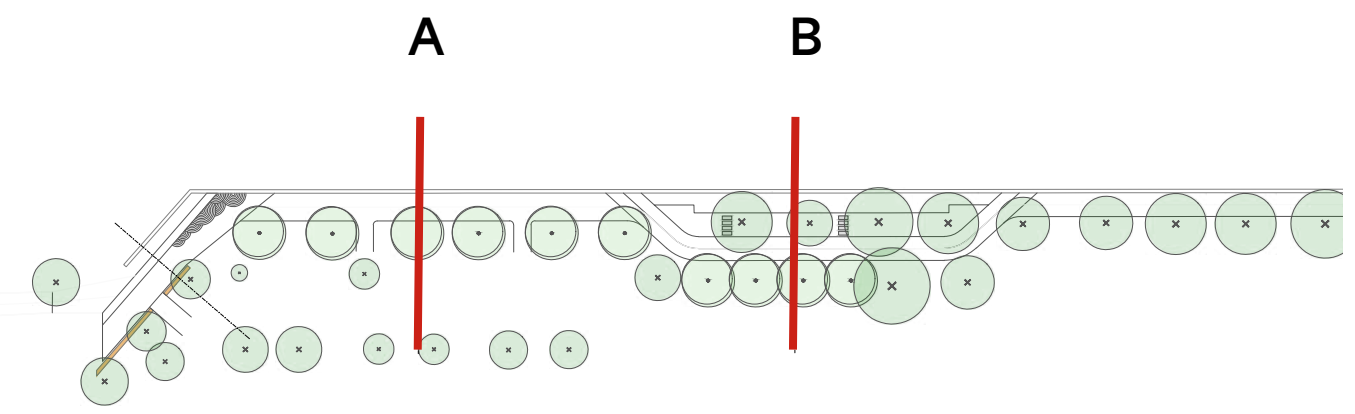


**Project**  
**TUGGERANONG FORESHORE IMPROVEMENTS**

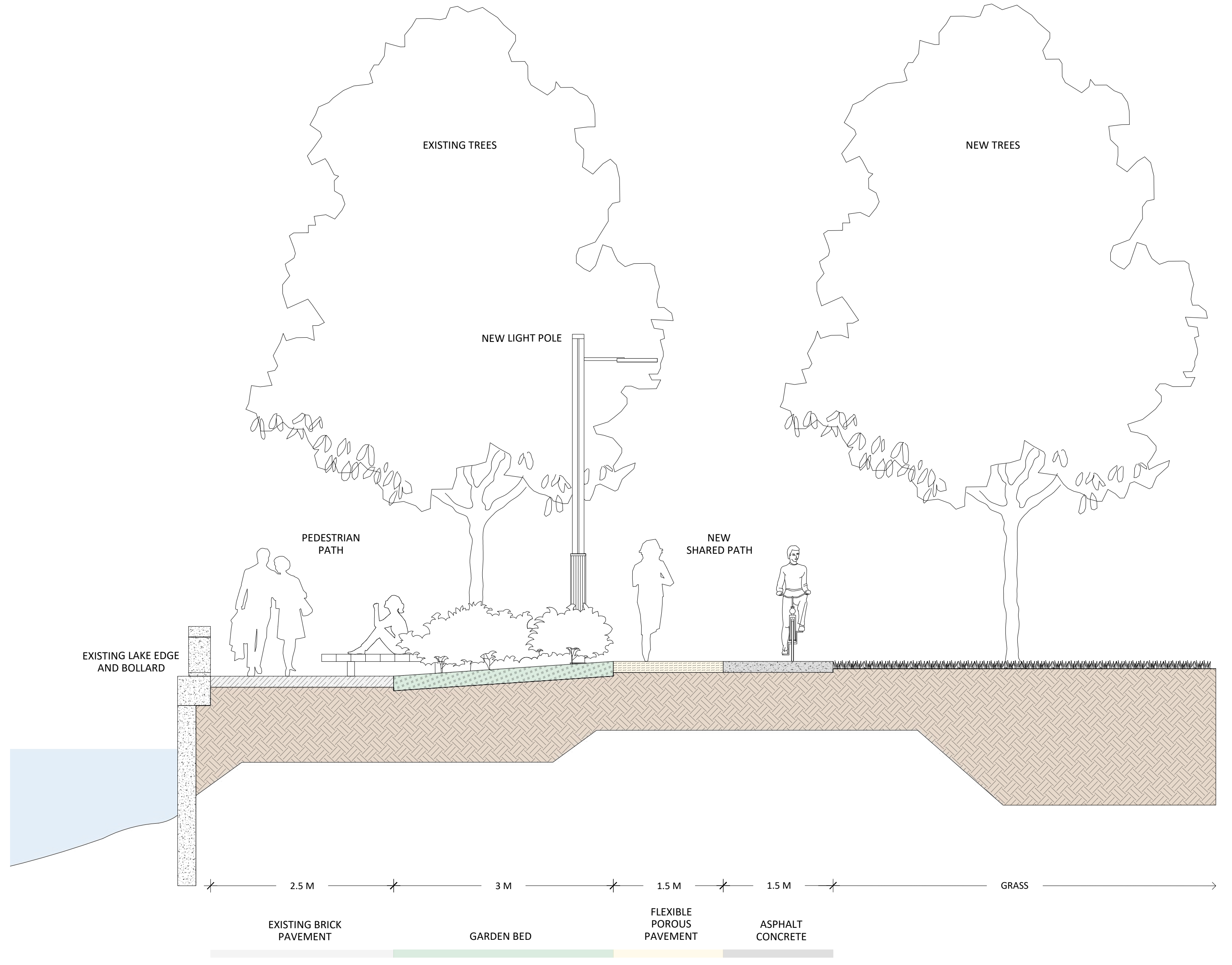
| Revision |                       |          |    |
|----------|-----------------------|----------|----|
| A        | Issue for Information | 25/08/22 | AC |
| B        | Issue for Information | 29/08/22 | AC |
|          |                       |          |    |
|          |                       |          |    |
|          |                       |          |    |

| Drawing Title           |                |     |
|-------------------------|----------------|-----|
| COLLEGE WALK            |                |     |
| Status                  |                |     |
| PRELIMINARY SKETCH PLAN |                |     |
| Project Number          | Drawing Number | Rev |
| 2169                    | L03            | B   |





COLLEGE WALK \_ SECTION A



COLLEGE WALK \_ SECTION B



**Lead Consultant**

PLACE Laboratory  
Place Laboratory Pty Ltd (as trustee for The Lab Unit Trust)  
ABN 24 169 889 699

**Consultants**



**Client**



**Project**

**TUGGERANONG  
FORESHORE  
IMPROVEMENTS**

**Revision**

|          |                       |          |    |
|----------|-----------------------|----------|----|
| <b>A</b> | Issue for Information | 25/08/22 | AC |
| <b>B</b> | Issue for Information | 29/08/22 | AC |

**Drawing Title**

**COLLEGE WALK**

**Status**

**PRELIMINARY SKETCH PLAN**

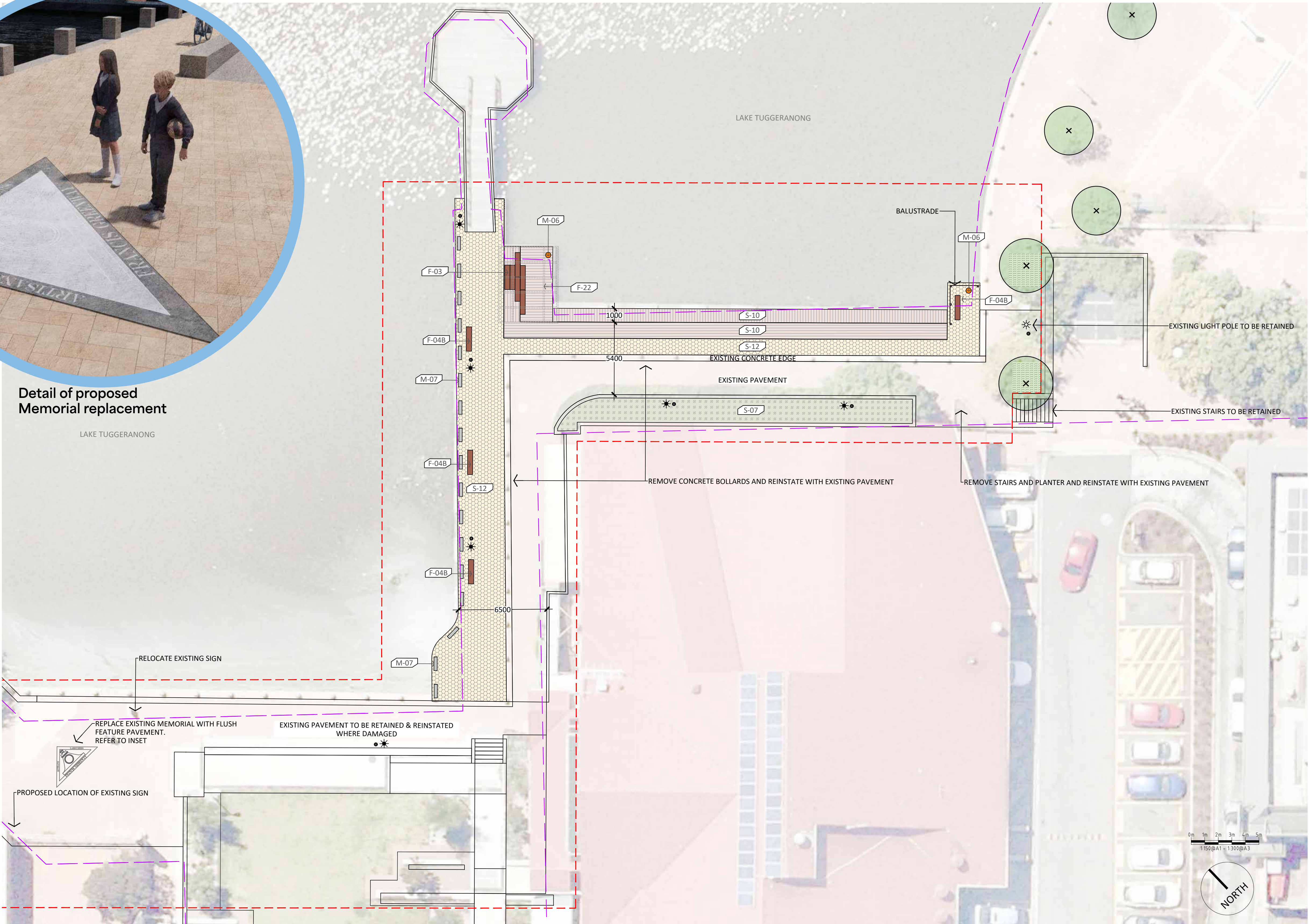
| Project Number | Drawing Number | Rev      |
|----------------|----------------|----------|
| 2169           | L04            | <b>B</b> |





Detail of proposed  
Memorial replacement

LAKE TUGGERANONG



LANDSCAPE LEGEND

- MISCELLANEOUS**
- M-01 SANDSTONE BLOCKS
  - M-02 PRECAST CONCRETE STEPPER
  - M-05 BIKE GRAB RAIL
  - M-06 PLAYWORKS TALK TUBE
  - M-07 RECLAIMED TIMBER KERB BLOCK

- SURFACE FINISHES**
- S-01 INSITU CONCRETE PAVING
  - S-02 FEATURE PAVING, INSITU CONCRETE WITH INTEGRAL COLOUR OXIDE
  - S-03 CONCRETE PATTERN
  - S-04 ASPHALT CONCRETE
  - S-05 COMPACTED GRAVEL
  - S-06 BRICK PAVING TO MATCH EXISTING
  - S-07 GARDEN BED
  - S-08 STEEL EDGE
  - S-09 LINE MARKING
  - S-10 RECLAIMED TIMBER BOARDWALK
  - S-11 FLEXIBLE POROUS PAVING
  - S-12 MICROMESH
  - S-13 CYCLE PATH PAINT
  - S-20 GRASS

- FURNITURE ELEMENTS**
- F-01A LINEA PLATFORM BENCH (BACK REST)
  - F-03 CUSTOM SEAT WITH RECLAIMED TIMBER
  - F-04A EXISTING REUSED BENCH
  - F-04B BENCH WITH RECLAIMED TIMBER
  - F-05 REMOVABLE BOLLARD
  - F-22 PERGOLA

- WALLS**
- W-01 LOW STONE CLAD WALL

- PLANTING**
- X EXISTING TREE
  - PROPOSED TREE

- LIGHTING**
- ☼ EXISTING LUMINAIRE AND COLUMN
  - ☼ PROPOSED SINGLE HEADED LUMINAIRE AND COLUMN
  - PROPOSED PE CELL



**Lead Consultant**  
PLACE Laboratory  
Place Laboratory Pty Ltd (as trustee for The Lab Unit Trust)  
ABN 24 169 889 699

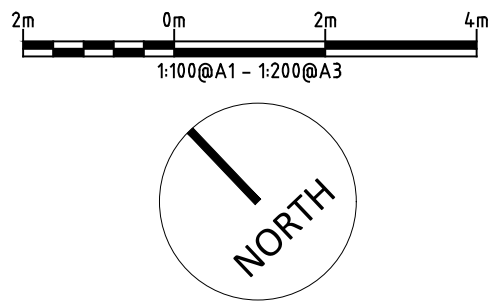
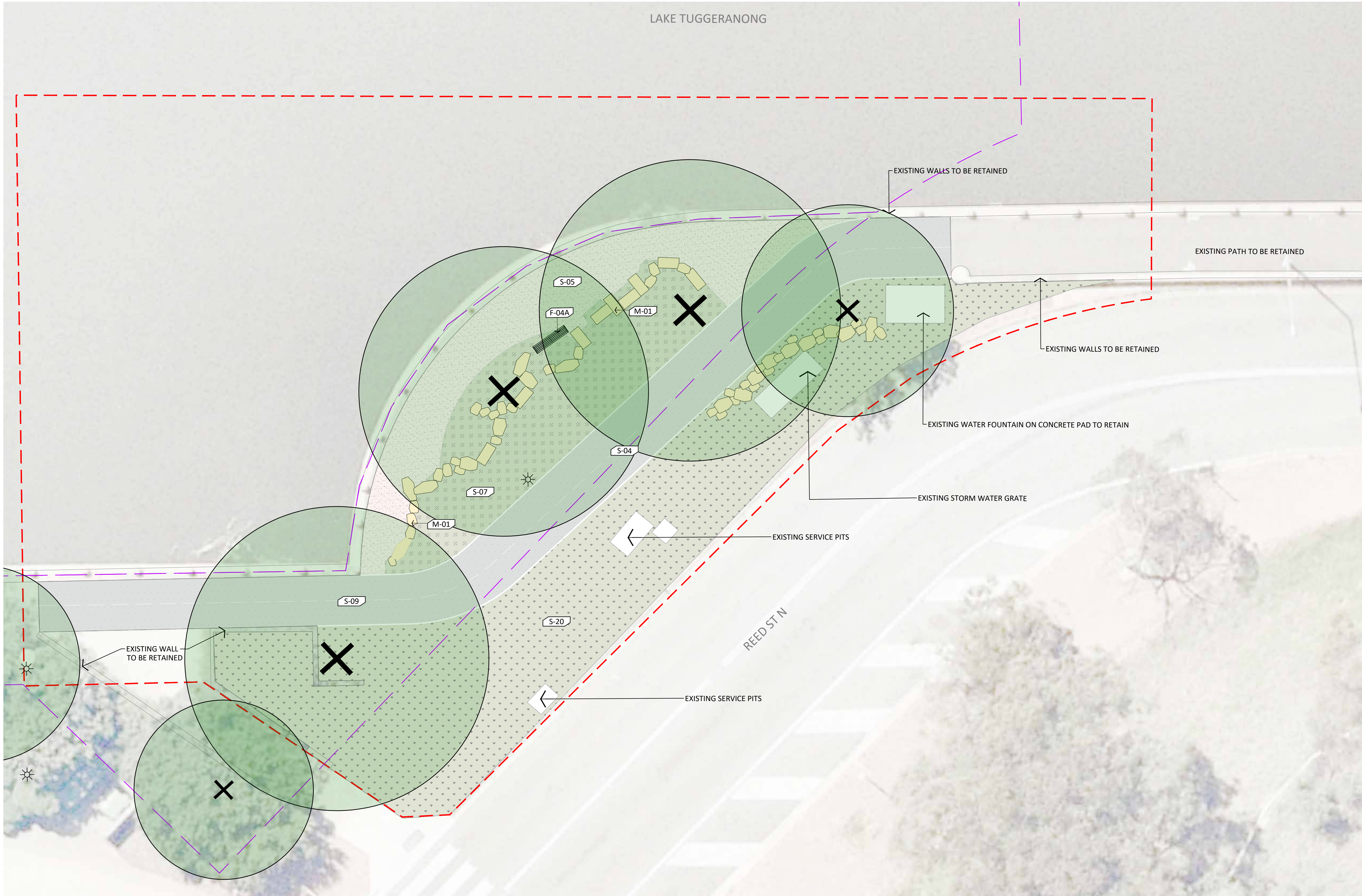


**Project**  
TUGGERANONG  
FORESHORE  
IMPROVEMENTS

| Revision |                       |          |    |
|----------|-----------------------|----------|----|
| A        | Issue for Information | 25/08/22 | AC |
| B        | Issue for Information | 29/08/22 | AC |
|          |                       |          |    |
|          |                       |          |    |
|          |                       |          |    |

| Drawing Title           |                |     |
|-------------------------|----------------|-----|
| BOARDWALK               |                |     |
| Status                  |                |     |
| PRELIMINARY SKETCH PLAN |                |     |
| Project Number          | Drawing Number | Rev |
| 2169                    | L05            | B   |





LANDSCAPE LEGEND

- SITE BOUNDARY
- EXTENT OF WORKS

MISCELLANEOUS

- M-01 SANDSTONE BLOCKS
- M-02 PRECAST CONCRETE STEPPER
- M-05 BIKE GRAB RAIL
- M-06 PLAYWORKS TALK TUBE
- M-07 RECLAIMED TIMBER KERB BLOCK

SURFACE FINISHES

- S-01 INSITU CONCRETE PAVING
- S-02 FEATURE PAVING, INSITU CONCRETE WITH INTEGRAL COLOUR OXIDE
- S-03 CONCRETE PATTERN
- S-04 ASPHALT CONCRETE
- S-05 COMPACTED GRAVEL
- S-06 BRICK PAVING TO MATCH EXISTING
- S-07 GARDEN BED
- S-08 STEEL EDGE
- S-09 LINE MARKING
- S-10 RECLAIMED TIMBER BOARDWALK
- S-11 FLEXIBLE POROUS PAVING
- S-12 MICROMESH
- S-13 CYCLE PATH PAINT
- S-20 GRASS

FURNITURE ELEMENTS

- F-01A LINEA PLATFORM BENCH (BACK REST)
- F-03 CUSTOM SEAT WITH RECLAIMED TIMBER
- F-04A EXISTING REUSED BENCH
- F-04B BENCH WITH RECLAIMED TIMBER
- F-05 REMOVABLE BOLLARD
- F-22 PERGOLA

WALLS

- W-01 LOW STONE CLAD WALL

PLANTING

- EXISTING TREE
- PROPOSED TREE

LIGHTING

- EXISTING LUMINAIRE AND COLUMN
- PROPOSED SINGLE HEADED LUMINAIRE AND COLUMN
- PROPOSED PE CELL



**Lead Consultant**  
PLACE Laboratory  
Place Laboratory Pty Ltd (as trustee for The Lab Unit Trust)  
ABN 24 169 889 699

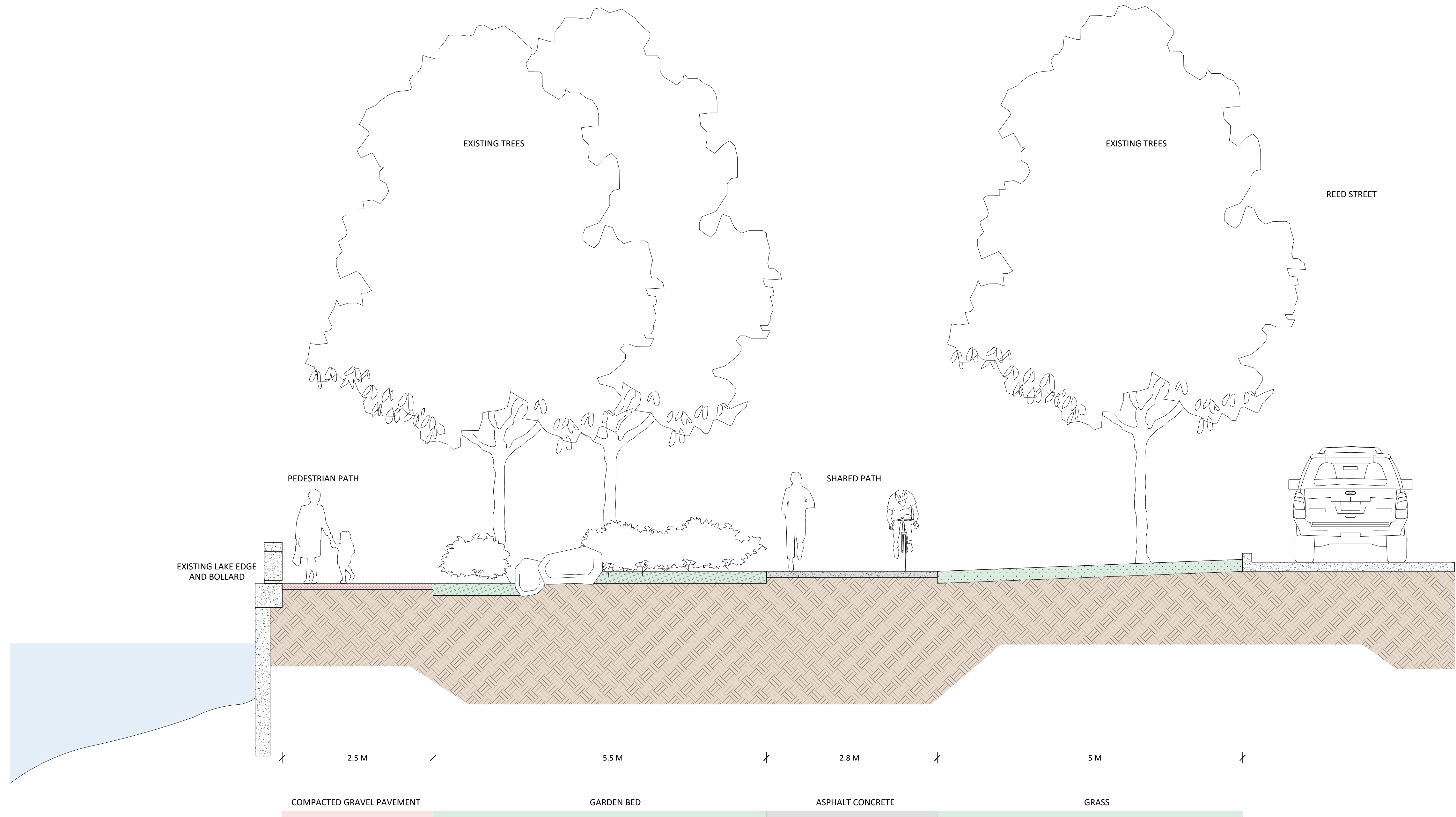
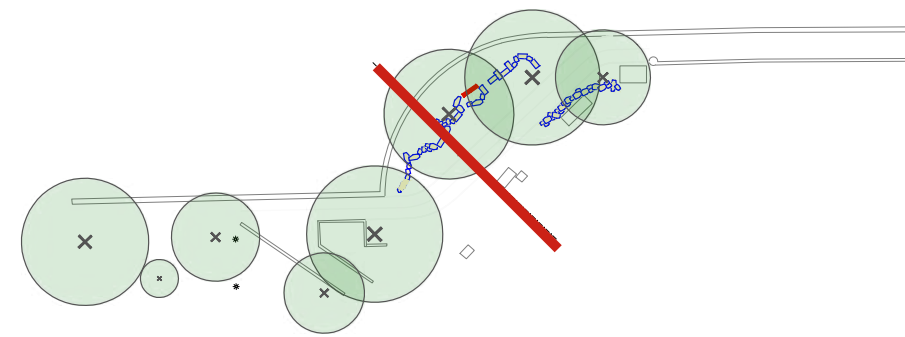


**Project**  
**TUGGERANONG FORESHORE IMPROVEMENTS**

| Revision |                       |          |    |
|----------|-----------------------|----------|----|
| A        | Issue for Information | 25/08/22 | AC |
| B        | Issue for Information | 29/08/22 | AC |
|          |                       |          |    |
|          |                       |          |    |
|          |                       |          |    |

| Drawing Title           |                |     |
|-------------------------|----------------|-----|
| REED ST SOUTH           |                |     |
| Status                  |                |     |
| PRELIMINARY SKETCH PLAN |                |     |
| Project Number          | Drawing Number | Rev |
| 2169                    | L06            | B   |





**Lead Consultant**  
PLACE Laboratory  
Place Laboratory Pty Ltd (as trustee for The Lab Unit Trust)  
ABN 24 169 889 699



**Project**  
**TUGGERANONG  
FORESHORE  
IMPROVEMENTS**

| Revision |                       |          |    |
|----------|-----------------------|----------|----|
| A        | Issue for Information | 25/08/22 | AC |
| B        | Issue for Information | 29/08/22 | AC |
|          |                       |          |    |
|          |                       |          |    |
|          |                       |          |    |

| Drawing Title           |                |     |
|-------------------------|----------------|-----|
| REED ST SOUTH           |                |     |
| Status                  |                |     |
| PRELIMINARY SKETCH PLAN |                |     |
| Project Number          | Drawing Number | Rev |
| 2169                    | L07            | B   |





LANDSCAPE LEGEND

EXTENT OF WORKS

SURFACE FINISHES

- S-01 INSITU CONCRETE PAVING
- S-07 GARDEN BED
- S-08 STEEL EDGE
- S-14 MULCH
- S-15 IAS RUBBER
- S-16 IAS SAND
- S-17 DRY CREEK

PLANTING

- x EXISTING TREE
- PROPOSED TREE

MISCELLANEOUS

- M-03 BOULDERS
- M-03 RELOCATED TIMBER STEPPERS
- M-04 RELOCATED TIMBER LOGS

ELECTRICAL

- EXISTING LIGHT POLE - SINGLE

FURNITURE ELEMENTS

- F-02 PICNIC TABLE (BACK REST)
- F-04A EXISTING REUSED BENCH
- F-06 RUBBISH BIN
- F-07 BIKE RACKS
- F-09 ACCESSIBLE CAROUSEL
- F-11 CLIMBING ROPE
- F-12 BALANCE CHALLENGE
- F-13 CLIMBING TOWER
- F-14A SAND DIGGER
- F-14B SAND DIGGER EQUAL ACCESS
- F-17 ACCESSIBLE TRANSFER BENCH
- F-18 RELOCATED SANDSTONE BLOCKS
- F-19 SWING
- F-20 DOUBLE FLYING FOX



**Lead Consultant**  
PLACE Laboratory  
Place Laboratory Pty Ltd (as trustee for The Lab Unit Trust)  
ABN 24 169 889 699

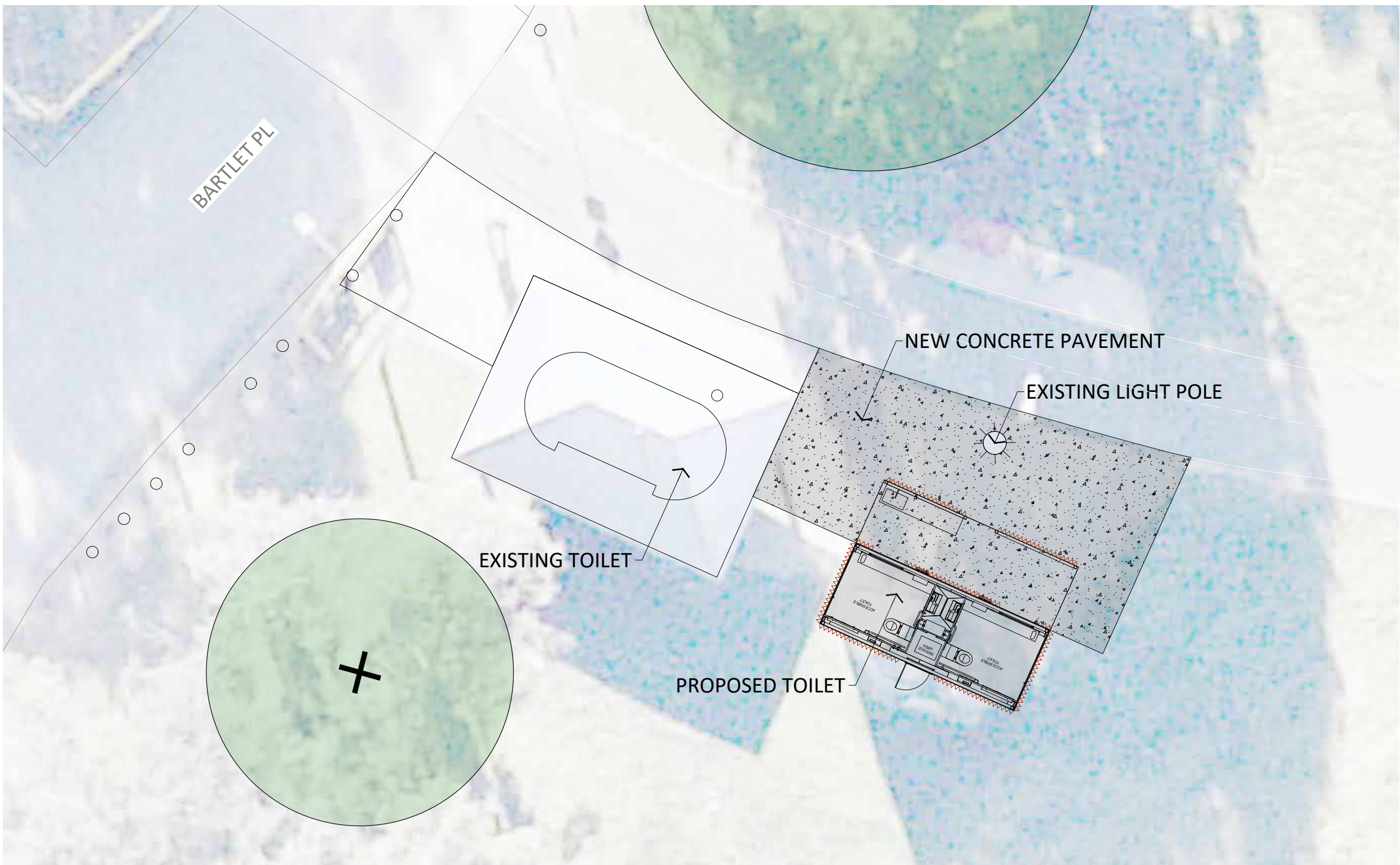


**Project**  
**TUGGERANONG FORESHORE IMPROVEMENTS**

| Revision |                       |          |    |
|----------|-----------------------|----------|----|
| A        | Issue for Information | 25/08/22 | AC |
| B        | Issue for Information | 29/08/22 | AC |
|          |                       |          |    |
|          |                       |          |    |

| Drawing Title           |                |     |
|-------------------------|----------------|-----|
| PLAYGROUND UPGRADE      |                |     |
| Status                  |                |     |
| PRELIMINARY SKETCH PLAN |                |     |
| Project Number          | Drawing Number | Rev |
| 2169                    | L08            | B   |

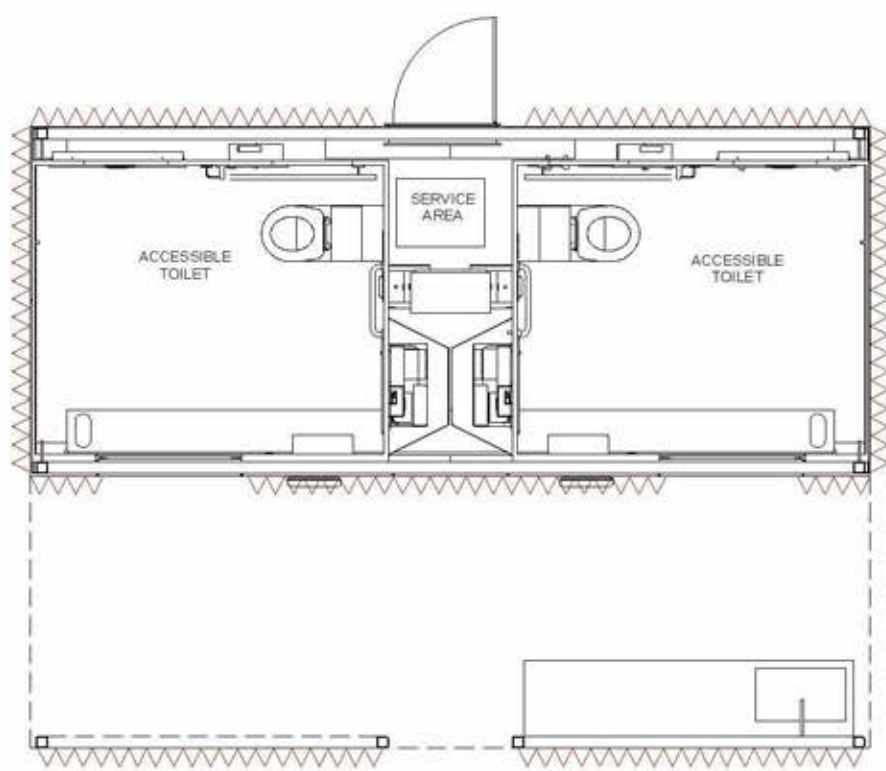




# NEW PUBLIC TOILET

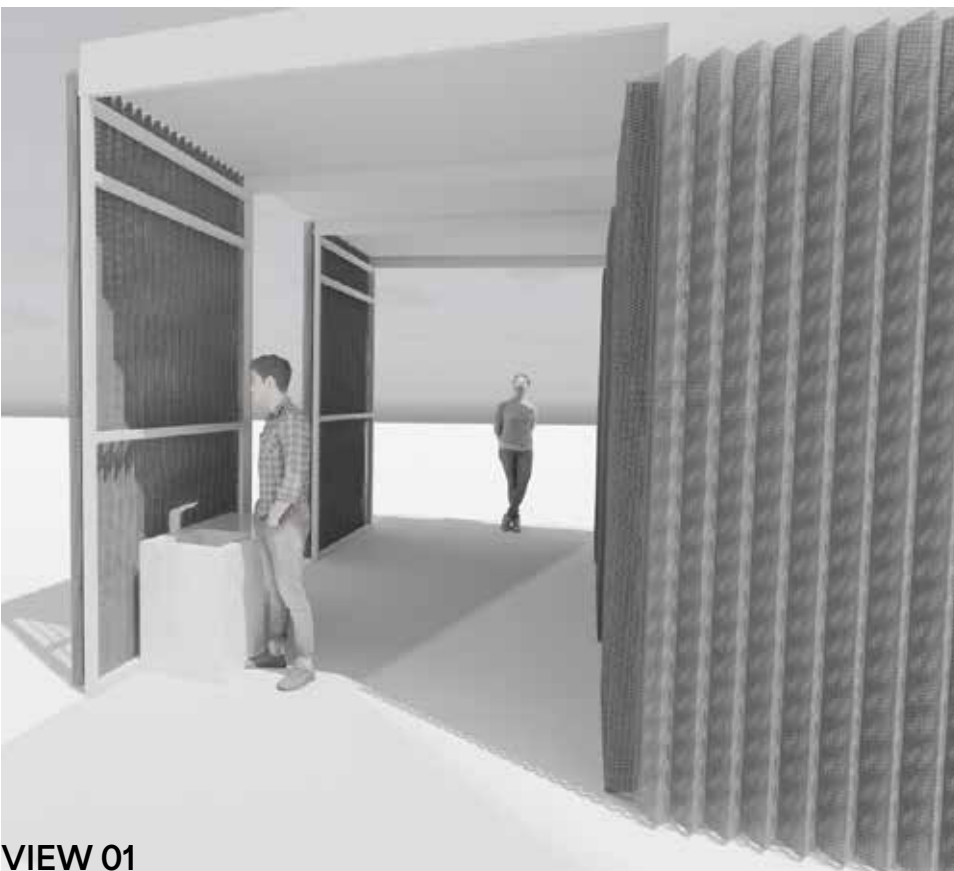
Proposed modular sanitary compartments to include:

- Demolition and disposal of existing masonry toilet
- Preparation of site, including footings, external concrete slab and services connections as required
- Install a modular twin universally accessible toilet as per AS1428.1-2009
- Additional outdoor free standing basin.

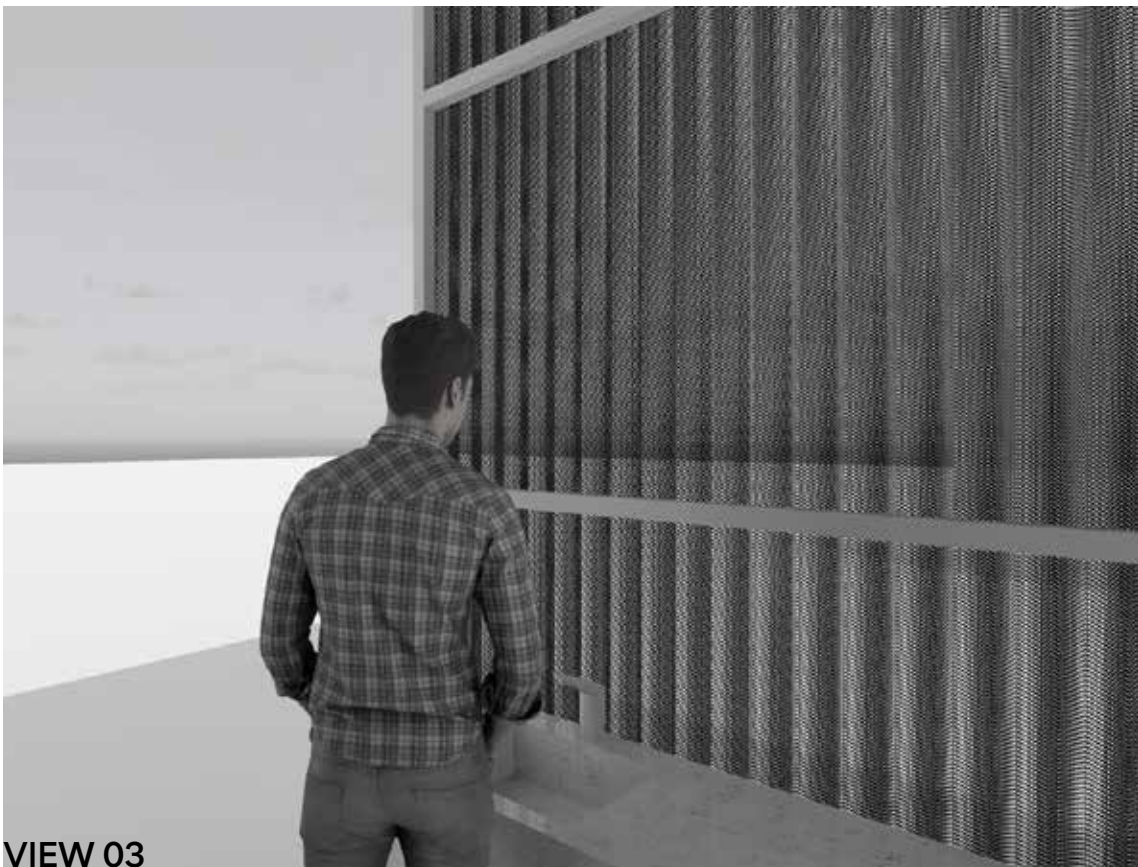


PROPOSED FLOOR PLAN

Proposed decorative metal screen with different folded shapess to be tested



VIEW 01



VIEW 03

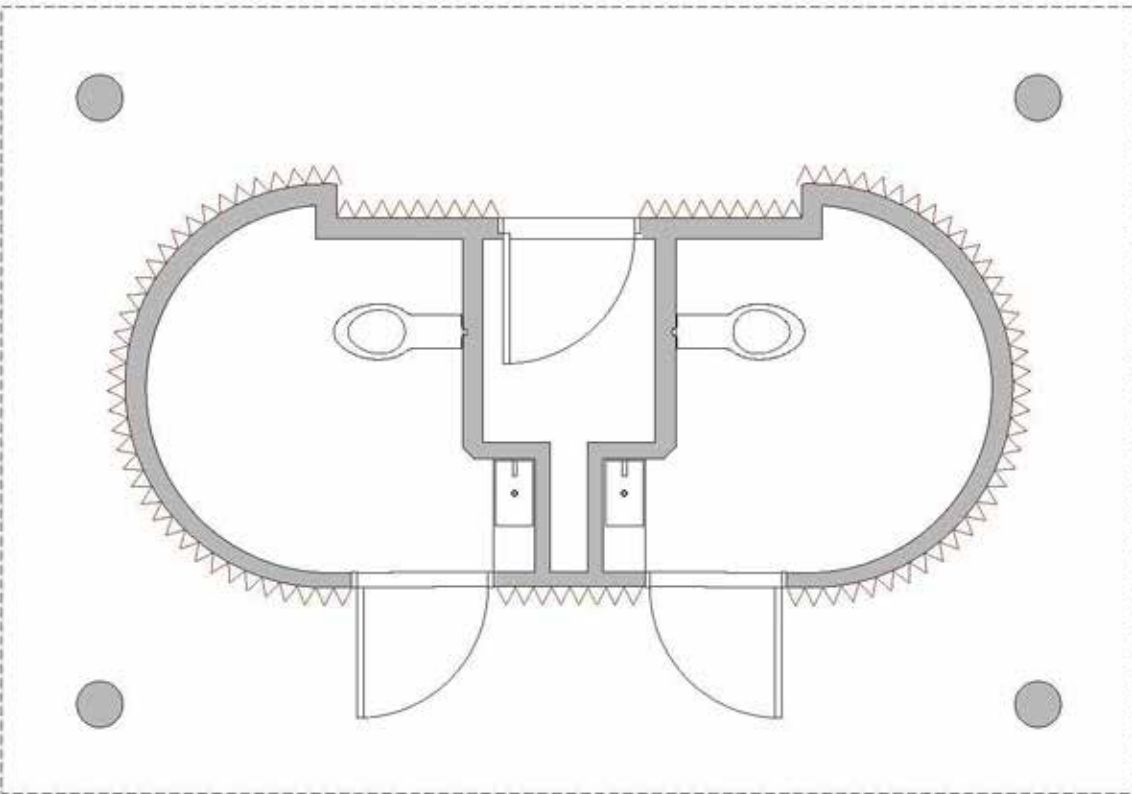


VIEW 02

# EXISTING PUBLIC TOILET - UPGRADE

Proposed upgrade of existing sanitary compartments to include:

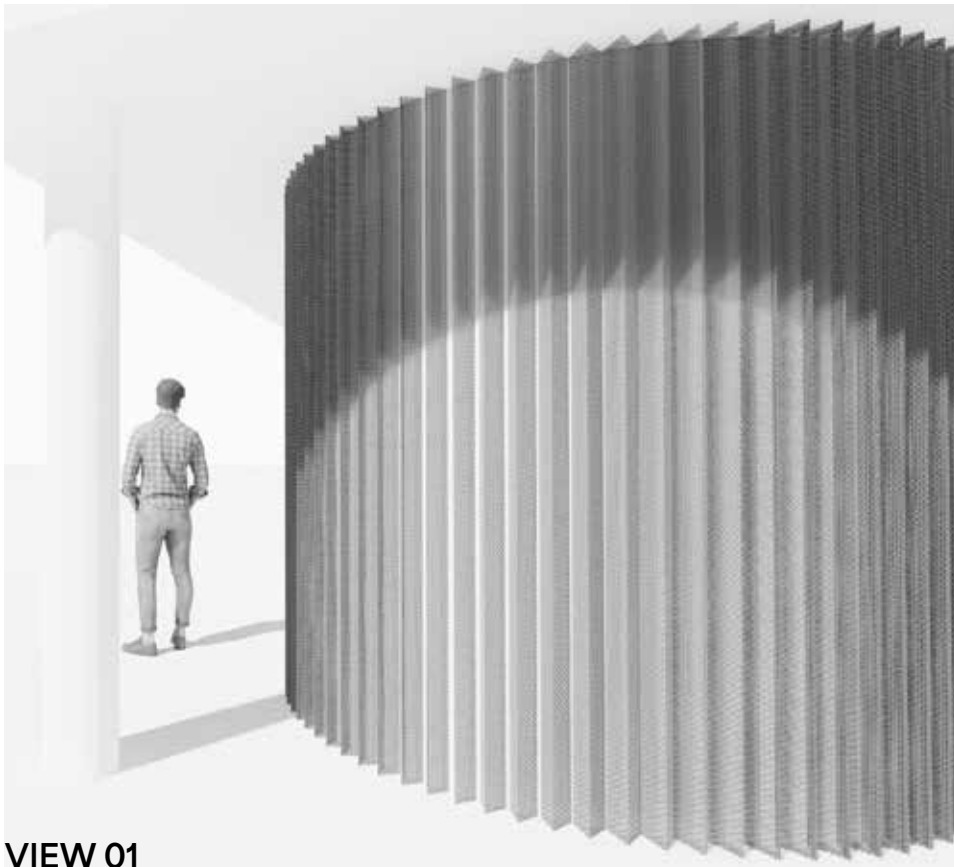
- Ensure all existing fixture and fittings are in a good working order or replace as required
- Ensure existing doors and locks are in a good working order and replace as required
- Reinstall corner beading as required
- Paint internally and externally, including anti graffiti coating
- Install compliant signage as outlined in AS1428.1-2009.
- Install external decorative metal mesh



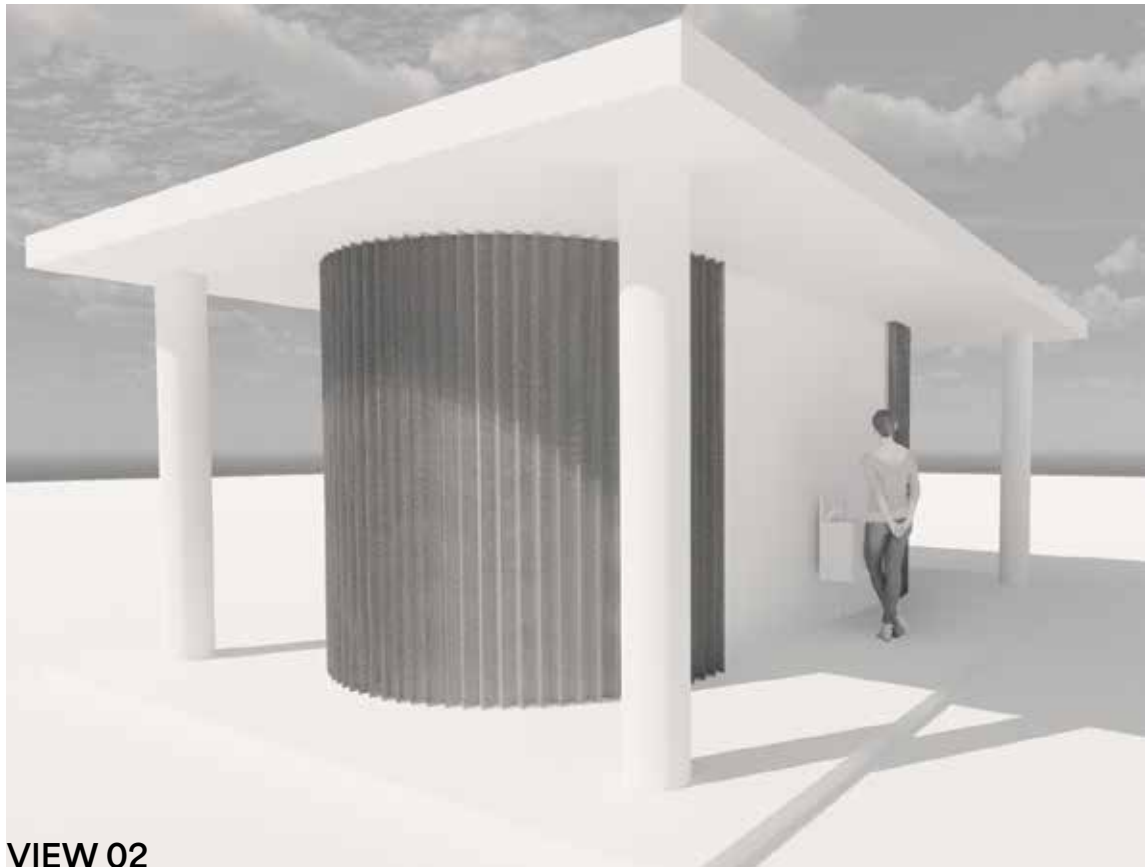
EXISTING FLOOR PLAN



VIEW 03



VIEW 01



VIEW 02



## Lead Consultant

PLACE Laboratory  
Place Laboratory Pty Ltd (as trustee for The Lab Unit Trust)  
ABN 24 169 889 699

## Consultants



## Client



## Project

**TUGGERANONG  
FORESHORE  
IMPROVEMENTS**

## Revision

|   |                       |          |    |
|---|-----------------------|----------|----|
| A | Issue for Information | 25/08/22 | AC |
| B | Issue for Information | 29/08/22 | AC |

## Drawing Title

**PUBLIC TOILET UPGRADE**

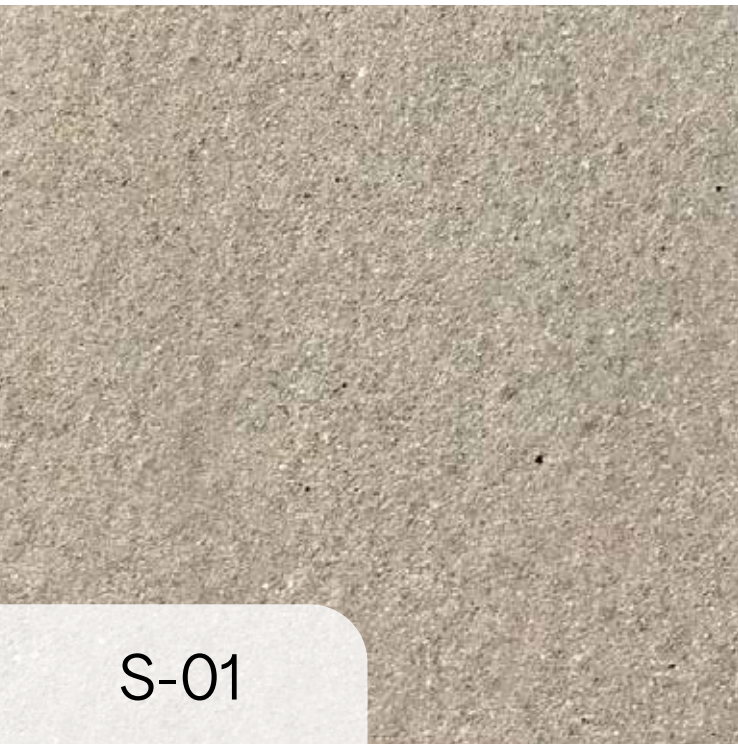
## Status

PRELIMINARY SKETCH PLAN

| Project Number | Drawing Number | Rev |
|----------------|----------------|-----|
| 2169           | L09            | B   |



SURFACE FINISHES



Insitu Concrete Paving



Feature Paving - Insitu Concrete with Integral Colour Oxide



Concrete Pattern



Ashphalt Concrete



Compacted Gravel



Brick Paving to match Existing



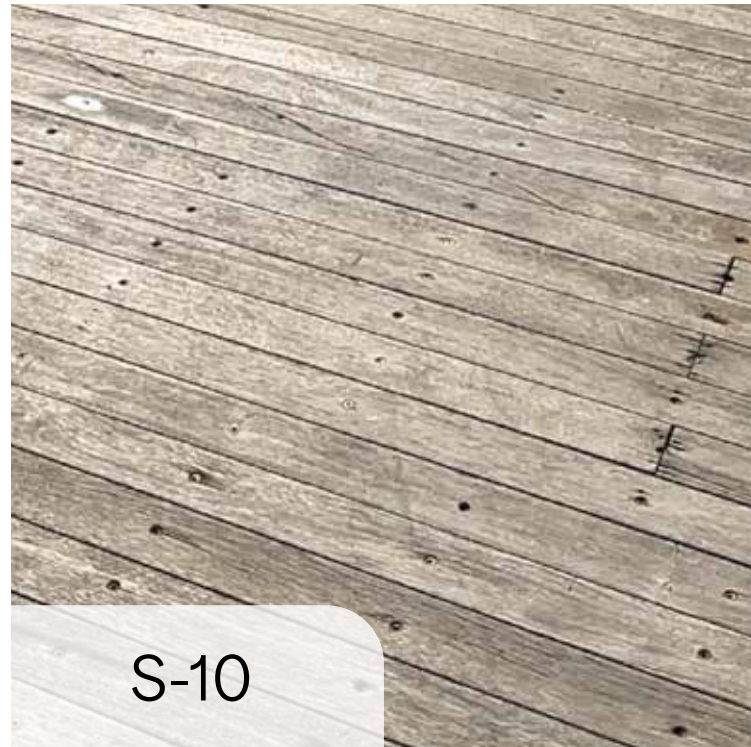
Garden Bed



Steel Edge



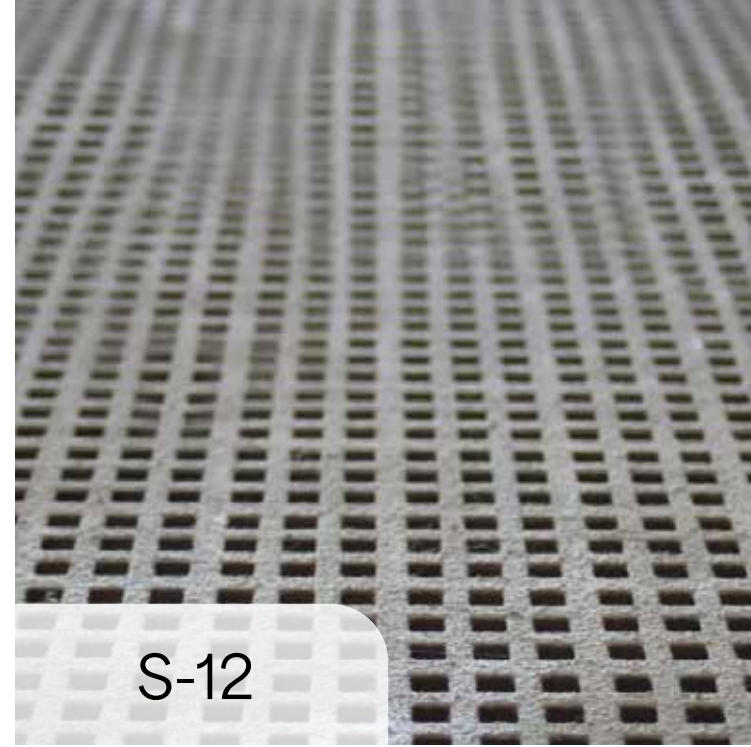
Line Marking



Reclaimed Timber Boardwalk



Flexible Porous Paving



Micromesh



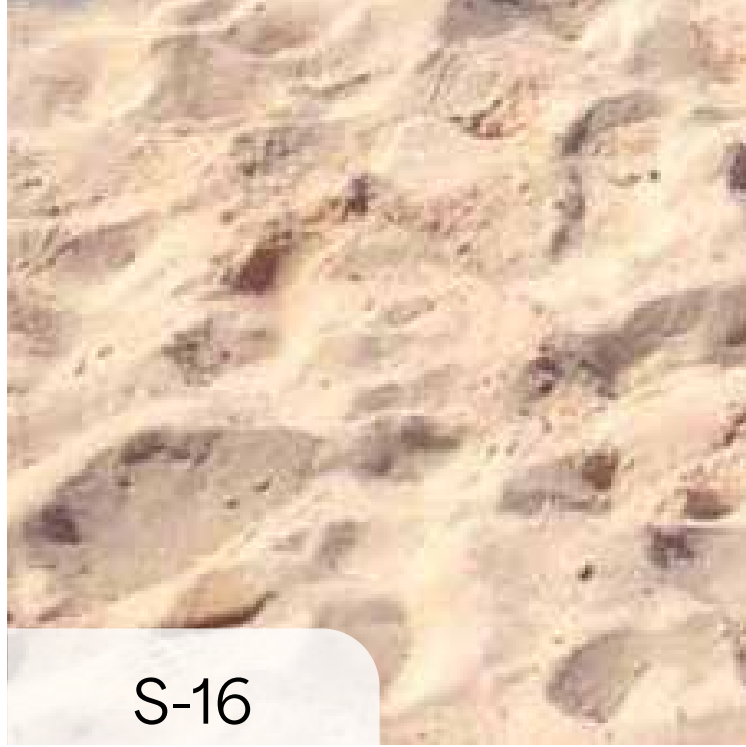
Cycle Path Paint



Mulch



IAS Rubber



IAS Sand



Dry Creek



**Lead Consultant**  
PLACE Laboratory  
Place Laboratory Pty Ltd (as trustee for The Lab Unit Trust)  
ABN 24 169 889 699



**Project**  
TUGGERANONG  
FORESHORE  
IMPROVEMENTS

| Revision       |                       |                |    | Drawing Title           |  |  |
|----------------|-----------------------|----------------|----|-------------------------|--|--|
| A              | Issue for Information | 25/08/22       | AC | MATERIAL PALETTE        |  |  |
| B              | Issue for Information | 29/08/22       | AC | Status                  |  |  |
|                |                       |                |    | PRELIMINARY SKETCH PLAN |  |  |
| Project Number |                       | Drawing Number |    | Rev                     |  |  |
| 2169           |                       | L10            |    | B                       |  |  |



FURNITURE



F-01A  
Linea Platform Bench  
(With Rest)



F-02  
Picnic Table



F-03  
Custom Seat with  
Reclaimed Timber



F-04A  
Reused Existing Bench



F-04B  
Custom Bench with  
Reclaimed Timber



F-05  
Removable Bollard



F-06  
Rubbish Bin



F-07  
Bike Racks



F-09  
Accessible Carousel



F-11  
Climber Rope



F-12  
Balance Challenge



F-13  
Climbing Tower



F-14A  
Sand Digger



F-14B  
Sand Digger Equal  
Access



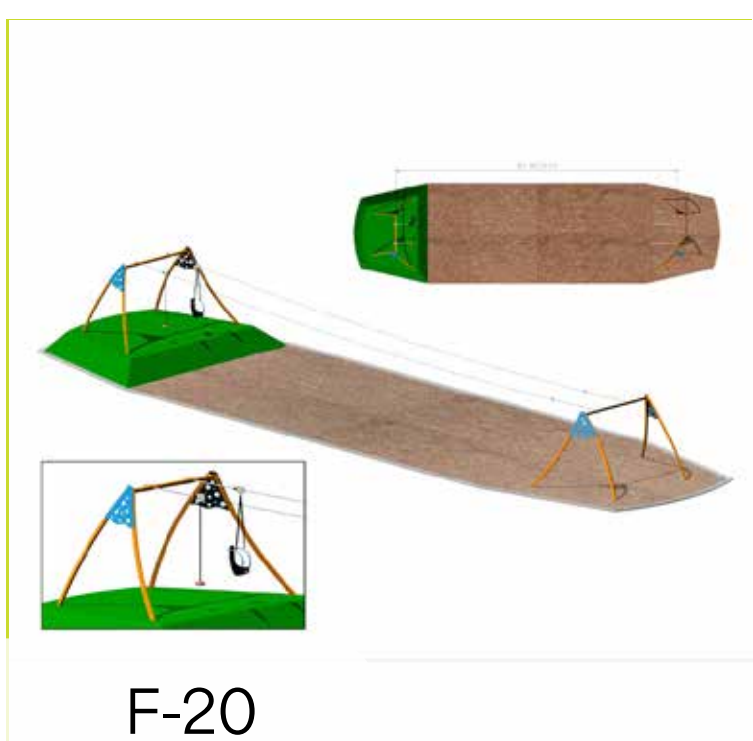
F-17  
Accessible Transfer  
Bench



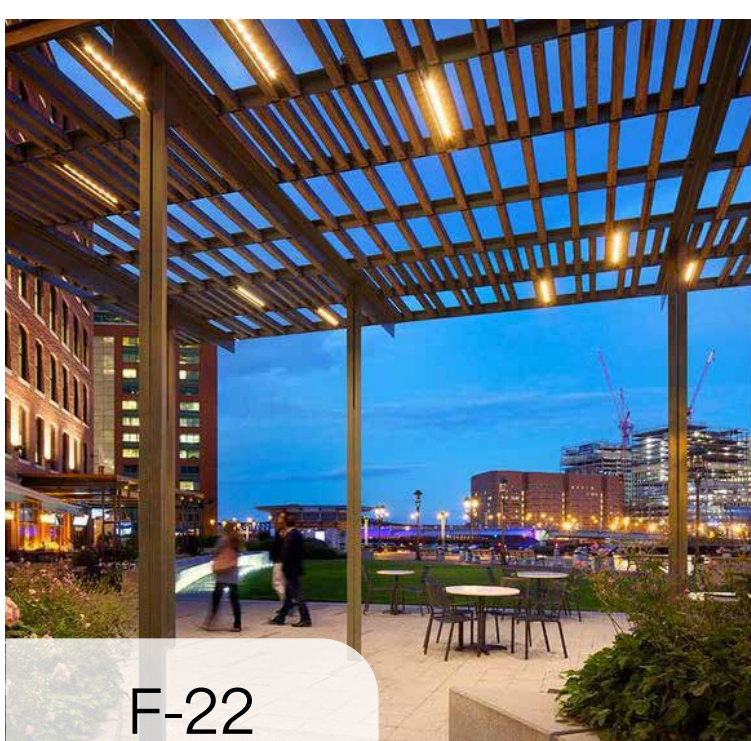
F-18  
Relocated Sandstone  
Blocks



F-19  
Swing



F-20  
Double Flying Fox



F-22  
Shade Structure



**Lead Consultant**  
PLACE Laboratory  
Place Laboratory Pty Ltd (as  
trustee for The Lab Unit Trust)  
ABN 24 169 889 699



**Project**  
TUGGERANONG  
FORESHORE  
IMPROVEMENTS

| Revision |                       |          |    |
|----------|-----------------------|----------|----|
| A        | Issue for Information | 25/08/22 | AC |
| B        | Issue for Information | 29/08/22 | AC |
|          |                       |          |    |
|          |                       |          |    |
|          |                       |          |    |

| Drawing Title           |                |     |
|-------------------------|----------------|-----|
| MATERIAL PALETTE        |                |     |
| Status                  |                |     |
| PRELIMINARY SKETCH PLAN |                |     |
| Project Number          | Drawing Number | Rev |
| 2169                    | L11            | B   |



WALLS



W-01  
Low Stone Clad Wall

MISCELLANEOUS



M-01  
Sandstone Blocks



M-02  
Precast Concrete Stepper



M-03  
Timber Stepper



M-04  
Timber Log



M-05  
Bike Grab Rail



M-06  
Playworks Talk Tube



M-07  
Reclaimed Timber Kerb Block



**Lead Consultant**  
PLACE Laboratory  
Place Laboratory Pty Ltd (as trustee for The Lab Unit Trust)  
ABN 24 169 889 699



**Project**  
TUGGERANONG  
FORESHORE  
IMPROVEMENTS

| Revision       |                       |                |    | Drawing Title           |  |  |
|----------------|-----------------------|----------------|----|-------------------------|--|--|
| A              | Issue for Information | 25/08/22       | AC | MATERIAL PALETTE        |  |  |
| B              | Issue for Information | 29/08/22       | AC | Status                  |  |  |
|                |                       |                |    | PRELIMINARY SKETCH PLAN |  |  |
| Project Number |                       | Drawing Number |    | Rev                     |  |  |
| 2169           |                       | L12            |    | B                       |  |  |



TREES



Acer x freemanii-Jeffersred



Ulmus parvifolia Todd

SHRUBS



Banksia spinulosa



Callistemon viminalis 'Slim jim'



Correa alba



Grevillea 'Fire Cracker'



Hebe speciosa



Westringia fruticosa

GROUNDCOVERS



Grevillea juniperina 'Gold Cluster'



Grevillea hybrid 'Royal Rambler'

GRASSES



Carex inversa 'Knob Sedge'



Lomandra longifolia x confertifolia spp. pallida



Poa labillardierei



Austrostipa stipoides 'Spear grass'



Pennisetum 'Fountain Grass'



Lomandra fluviatilis

CLIMBERS



Clematis microphylla



Trachelospermum jasminoides



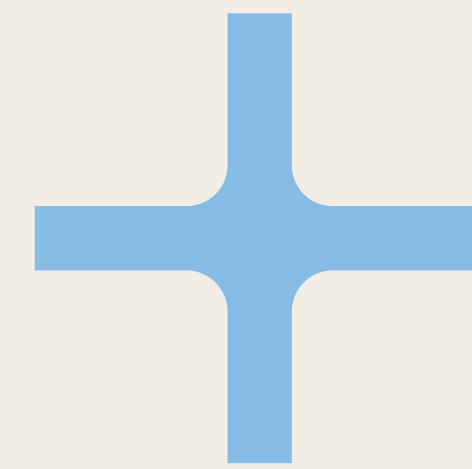
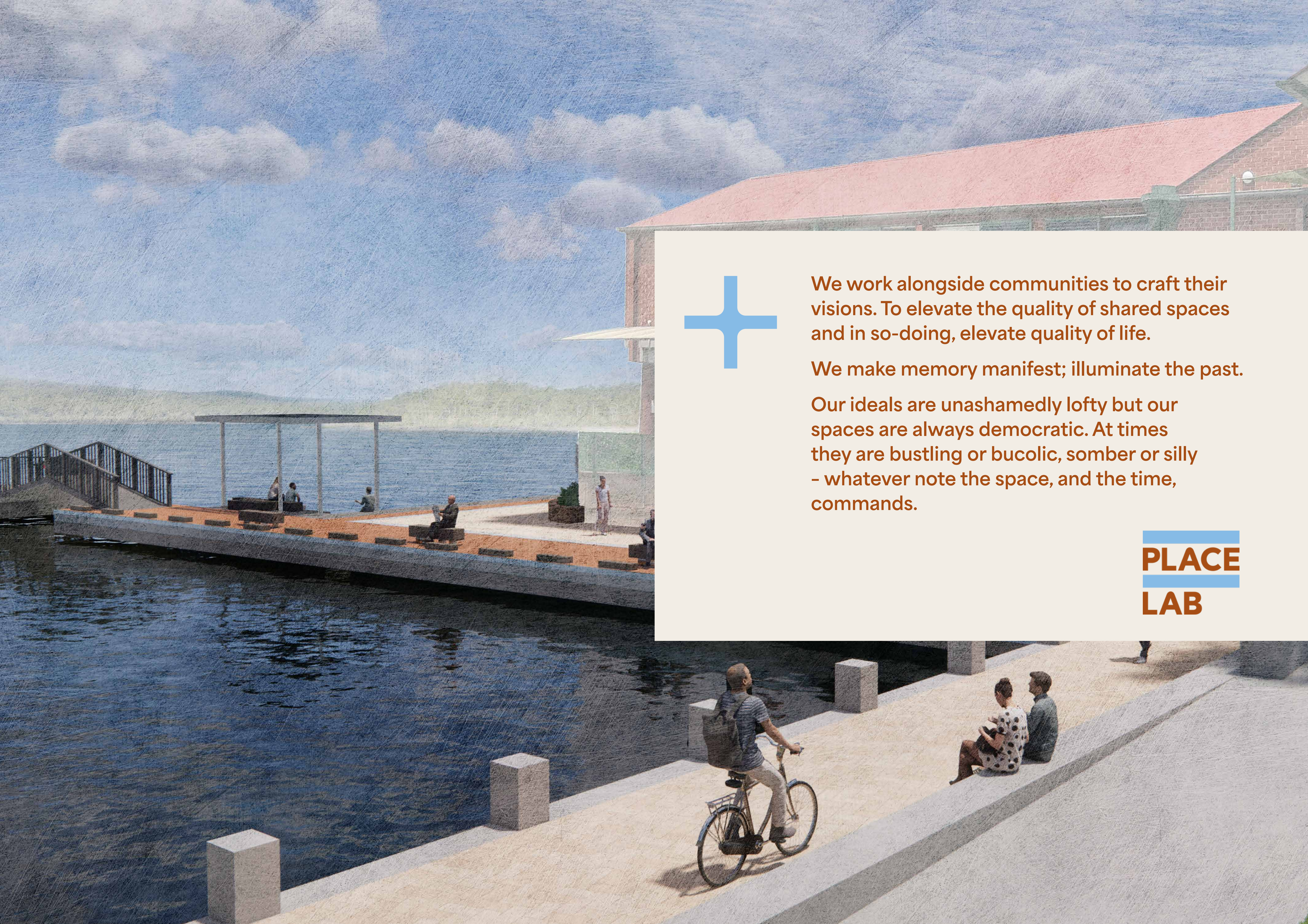
**Lead Consultant**  
PLACE Laboratory  
Place Laboratory Pty Ltd (as trustee for The Lab Unit Trust)  
ABN 24 169 889 699



**Project**  
TUGGERANONG  
FORESHORE  
IMPROVEMENTS

| Revision       |                       |                |    | Drawing Title           |  |  |
|----------------|-----------------------|----------------|----|-------------------------|--|--|
| A              | Issue for Information | 25/08/22       | AC | PLANTING PALETTE        |  |  |
| B              | Issue for Information | 29/08/22       | AC | Status                  |  |  |
|                |                       |                |    | PRELIMINARY SKETCH PLAN |  |  |
| Project Number |                       | Drawing Number |    | Rev                     |  |  |
| 2169           |                       | L13            |    | B                       |  |  |





We work alongside communities to craft their visions. To elevate the quality of shared spaces and in so-doing, elevate quality of life.

We make memory manifest; illuminate the past.

Our ideals are unashamedly lofty but our spaces are always democratic. At times they are bustling or bucolic, somber or silly - whatever note the space, and the time, commands.

**PLACE**  
**LAB**