

SUMMARY

DRAFT WESTON CREEK DISTRICT PLANNING STRATEGY

The Strategy is a vision of future planning for how we live, work, play and care for community in Weston Creek.



It sets the direction and intended future planning outcomes for the district, across the suburbs of Waramanga, Fisher, Weston, Rivett, Duffy, Holder, Chapman, and Stirling.



What residents value about the Weston Creek District

Weston Creek is surrounded by reserves and has its own unique characteristics that make it a great place to live. The Weston group centre Cooleman Court is the main location for employment and services and amenities for residents. While it has the smallest population of the 9 districts, there is a strong sense of community. Nine local centres bring people together and serve the various suburbs.

Through previous consultations the community has told us about the things they value the most about living in Weston Creek:

- access to open green space with natural reserves, micro forests, and shared green spaces within suburbs
- Narrabundah Hill, Stromlo Equestrian Centre and Cooleman Ridge
- views of the surrounding hills and ridges
- the district's central location and village feel, with ease of access to shops and services
- sense of belonging and community spirit after the 2003 Canberra bushfires which continues through with shared community involvement in events like Halloween and Christmas.








Future directions

Each district strategy is informed by five drivers.

The drivers align with a set of future directions that tell us the focus of the strategy. For Weston Creek these are:

5 big drivers

Directions for Weston Creek

 Blue-green network	<ul style="list-style-type: none">• Enhance priority blue-green connections at the western portion of Rivett and Duffy.• Prioritise the management of bushfire risks for existing and new development.
 Economic access and opportunity across the city	<ul style="list-style-type: none">• Grow small business and employment opportunities in Weston group centre to enhance and diversify its key economic role for the district.
 Strategic movement to support city growth	<ul style="list-style-type: none">• Enhance public transport priority connections to the City Centre and to Woden and Molonglo Valley in future.
 Sustainable neighbourhoods	<ul style="list-style-type: none">• Develop more diverse housing in and around the Weston group centre and integrate with rapid public transport corridors.
 Inclusive centres and communities	<ul style="list-style-type: none">• Consider the role and function of existing group and local centres including Fisher local, and where required undertake targeted initiatives to support centre viability and community development.• Strengthen the cross-district network of community facilities with consideration of demand and existing provision across Weston Creek, Woden, and Molonglo Valley districts.



Initiatives

A range of **initiatives** will deliver on the directions. Some are already planned or underway, and some are planned in the short term (5 years), medium term (10 years), long term (20 years) and longer term (more than 20 years).

The last page of this document has a full list of the initiatives for Woden Valley with further detail available in the Draft Weston Creek District Strategy.



Have your say on the **Draft Weston Creek District Strategy**

The Weston Creek Strategy is in **draft** form. We are seeking community feedback to find out what you think about it. We are **seeking your views on key development sites and change** areas and proposed **initiatives**, including what you think is most important, and what you think we should explore further.

You can find out more, read the Draft Weston Creek District Strategy and have your say through a series of in-person and online activities by visiting <https://yoursayconversations.act.gov.au/act-planning-review>



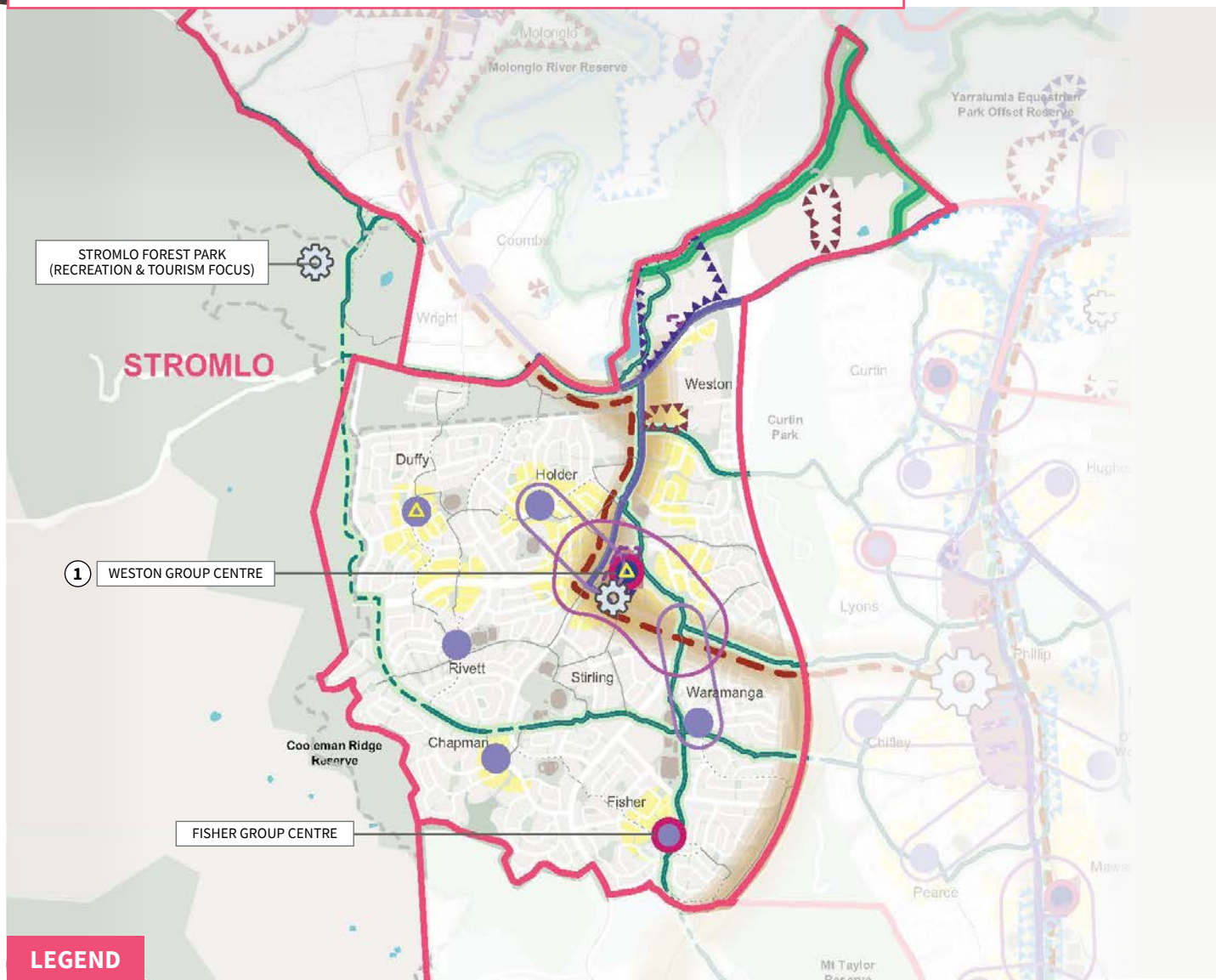
Change areas

Each district strategy includes **proposed, possible, and potential** key development sites and change areas, which are included on the map below.

For Weston Creek, this includes:

- ① Weston Group Centre

Draft Weston Creek Strategy Plan



LEGEND

Sustainable Neighbourhoods

- Future Investigation Areas
- Rapid Stop to Local Centre 200m Connections
- Rapid Stop to Group Centre 400m Connections
- Key Sites and Change Areas**
- Proposed
- Possible
- Potential

Inclusive Centres and Communities

- New Community and Recreation Facilities
- Possible Centre Revitalisation Opportunity
- Shopping Centre Improvement Program Underway

Strategic Movement

- Current Light Rail Corridor
- Proposed Light Rail Corridor
- Current Rapid Bus Corridor
- Proposed Rapid Bus Corridor
- Current Active Travel Community Network
- Proposed Active Travel Community Network
- Bicentennial National Trail
- Strategic Investigation Corridor
- High Speed Rail Alignment**
- Proposed
- Alternate

Blue-Green Network

- Open Space
- Nature Reserve
- Water Bodies
- Sportsfields
- Existing Connections**
- Primary
- Secondary
- Possible Future Connections**
- Primary
- Secondary

Economic Access and Opportunity

- Economic and Employment Focus
- City/ Town/Group/Local Centre
- Service Trades/Industrial
- Local Centre
- Group Centre
- Innovation Precinct

Note: This is a common legend for all similar district plans and not all items listed will appear on this drawing



Waterways and green space network (blue-green network)

- Conserve, restore and reconnect priority areas of high-quality connected grassland, woodland and riparian corridors and catchments, including interfaces with nature reserves at the edge of the district.
- Enhance the existing open space network to fill gaps and enhance useability for residents, including walking and cycling connections where appropriate and consistent with conservation values.
- Manage bushfire risks, including along the western portion of Rivett and Duffy linking into Stromlo Forest Park and through the open space network, providing key connections by linking centres, schools and the like.
- Utilise and enhance the blue-green network as areas are developed to provide greater amenity and connectivity within and between suburbs, including enhanced canopy coverage for new path networks and adequate consideration of bushfire risks.
- Implement enhanced water sensitive urban design (WSUD) as part of all future development proposals in the district.



Economic access and opportunity across the city

- Undertake detailed planning and analysis at the metropolitan level to understand the need for employment floorspace across the city, informing planning for Weston group centre and its prospects for providing more services and employment opportunities for local residents.
- Undertake detailed analysis of capacity in Weston group centre and prospects for more employment floorspace and diversity of employment uses, including review of existing building height and other controls in the Territory Plan with a view to facilitating low-scale, small block, street facing office and mixed-use developments.
- Implement urban design upgrades for Brierly Street to enliven Weston group centre in consultation with the community.



Strategic movement to support city growth

- Analyse strategic investigation corridors for future rapid transit connections from Weston Creek to Woden and Molonglo Valley as part of planning for the wider Canberra network over the long term.
- Review current and future rapid transport stops to create group and local centre connections and areas for transport-oriented development applying sustainable neighbourhoods objectives.
- Deliver upgrades to Streeton Drive intersections to improve safety for drivers, cyclists and pedestrians.
- Expand the micro-mobility network to Weston Creek District, and other initiatives aligned with the implementation of the ACT Transport Strategy.



Sustainable neighbourhoods

- Undertake further detailed analysis and modelling to identify future housing needs not able to be met by identified change areas across Weston Creek District.
- Undertake detailed analysis and planning for Weston Creek future investigation areas to accommodate future housing and facilitate desired urban character based on suitability and transect analysis and opportunities in identified 200m/400m stop-to-centre connection areas (aligned with rapid transit network).
- Apply district strategy objectives to the Weston group centre, particularly those for the sustainable neighbourhoods driver.
- Identify and prioritise local-scale projects to promote active streets, celebrating existing leafy areas and local centres, in line with the implementation of the ACT Transport Strategy and integrating 'urban improvement' approaches.
- Development precincts to demonstrate and achieve improved tree canopy cover, permeability and urban heat outcomes when compared to similar previous precincts.
- All development precincts to provide the infrastructure needed to deliver the zero carbon transition, with additional precinct-based initiatives to also be encouraged.
- Investigate planning and design provisions that encourage the supply of affordable housing.



Inclusive centres and communities

- Identify possible local and group centres for investigation of appropriate planning and non-planning initiatives to support their ongoing viability and role as a community meeting place. Initial possibilities are the Fisher local centre and the Weston group centre (where future economic opportunities will be a key focus).
- Undertake detailed localised analysis to inform and confirm the need for new community and recreational facilities in Weston Creek District, considering interdependencies on Woden and other districts for higher order facilities. This includes collaboration across government directorates and with the community.
- Identify unleased/available sites within Weston Creek District and assess their suitability for community facilities for which there is identified demand.
- Make sure sufficient land is identified and preserved for social and community uses alongside residential growth to accompany areas of change and support economic development in further detailed planning for the Weston group centre.