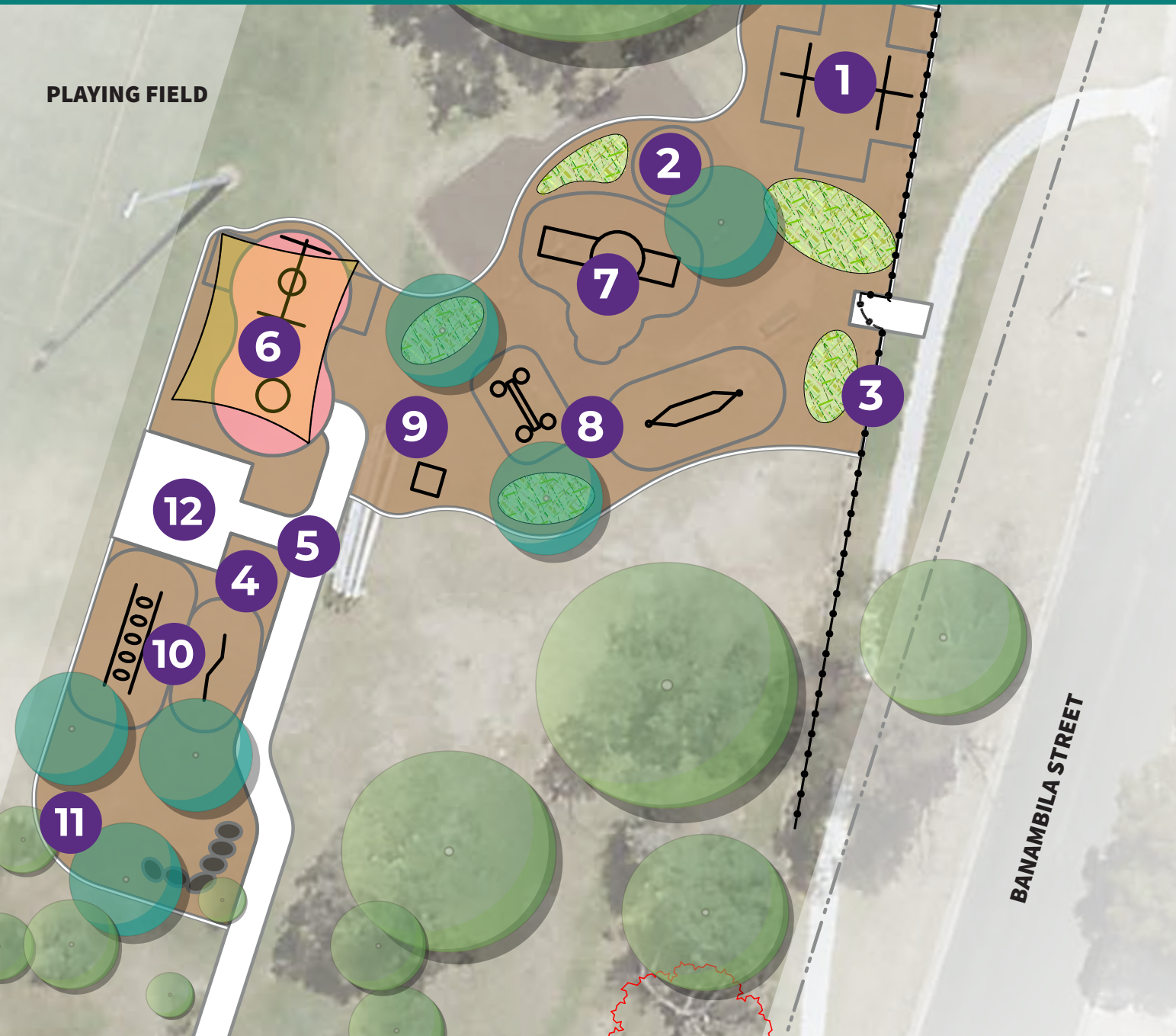


# Banambila Street playground

## Preliminary design

**PLAYING FIELD**



### Map Key

- 1 Existing double swing set (relocated)
- 2 Existing rocker (one removed)
- 3 New fence and gate
- 4 Existing bench seat relocated
- 5 New concrete path
- 6 New shade sail (with cultural artwork to posts) over proposed accessible swing and spinner (all ages)
- 7 New junior fort- includes nature play, climbing and slide (ages 5-9)
- 8 New central nature play area - includes balance, climbing and Ngunnawal cultural theme play items (ages 5-13)
- 9 New toddler area - includes cubby and nature play (ages 0-4)
- 10 Fitness station for adults, including seniors (ages 14+)
- 11 Boulder edge to group seating area, including for teens (ages 14-17)
- 12 New centrally located covered seating - includes shelter and picnic table