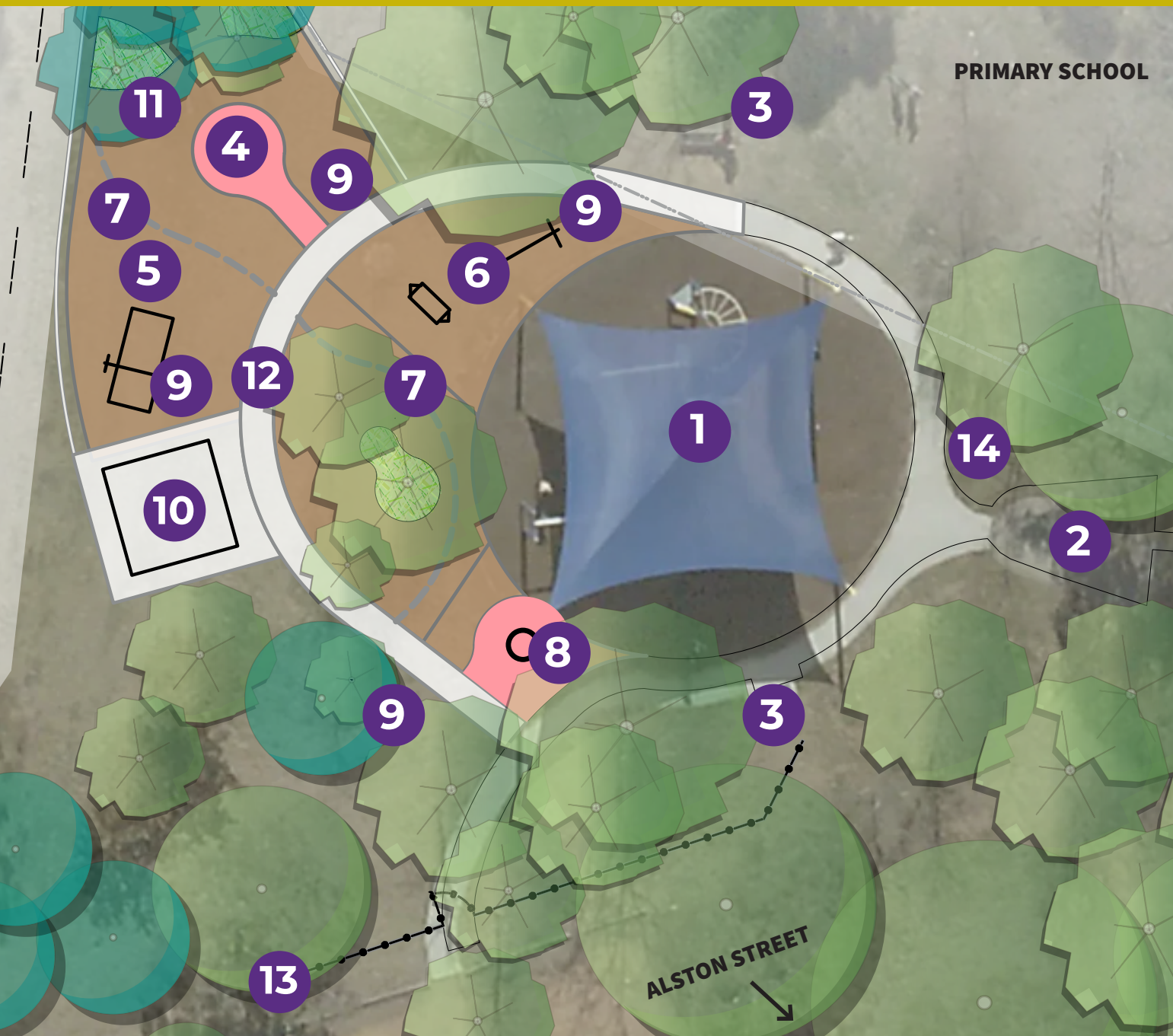


Alston Street playground

Preliminary design



Map Key

- 1** Existing play equipment with shade sail over (with cultural artwork to posts)
- 2** Existing basketball hoop and hardstand area (with cultural artwork to backboard)
- 3** Existing bench seat
- 4** New accessible swing (ages <4–13+)
- 5** New toddler and junior play space (ages <4–7)
- 6** New balance, climbing and nature play (ages 4–13)
- 7** New nature play journey (ages 4–13)
- 8** New accessible spinner (ages 4–13+)
- 9** Informative markers referencing animal imprints
- 10** New centrally located covered seating – includes shelter and picnic table
- 11** New bench seat
- 12** New concrete path with animal imprints referencing local Ngunnawal songline
- 13** New fence
- 14** Improvements to 14 overland drainage