



ACT
Government

What we heard

AUGUST TO
OCTOBER 2022



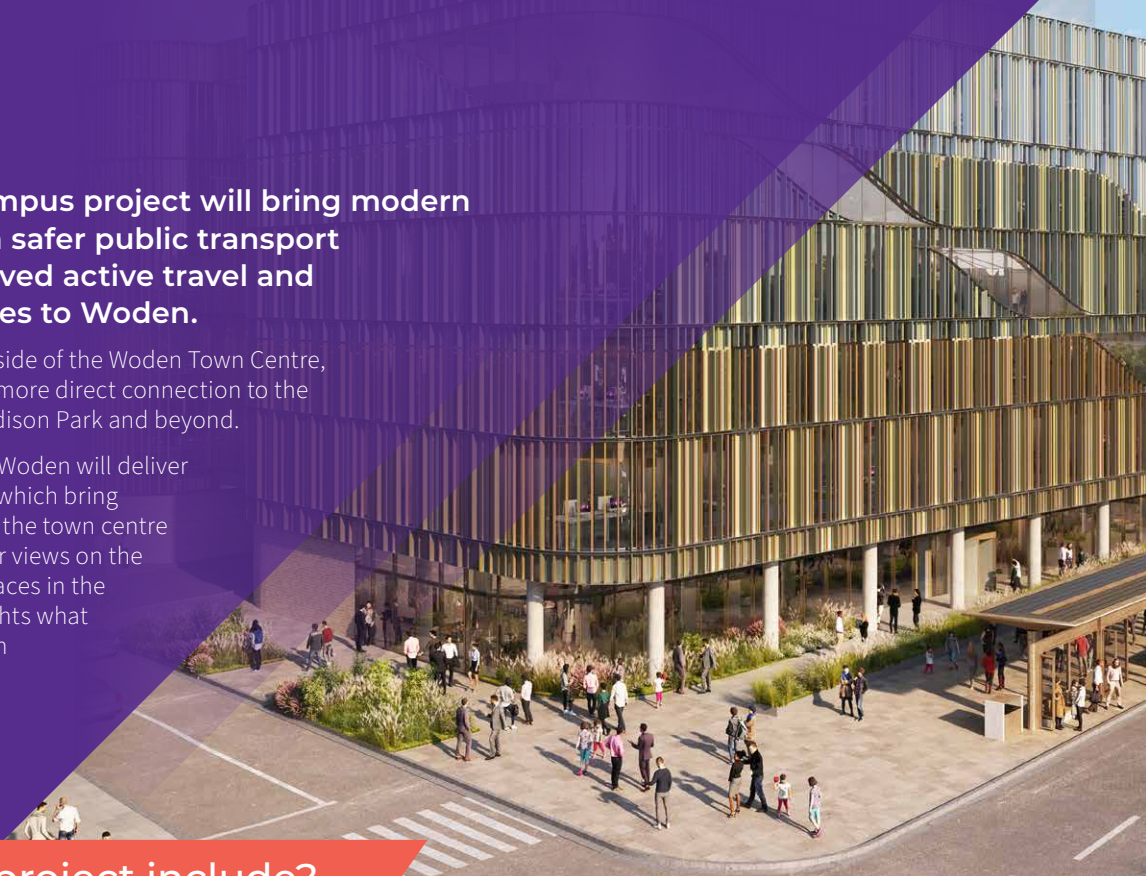
cit

Consultation on
CIT Campus Woden
**Concept designs
and use of public
spaces**

The CIT Woden Campus project will bring modern learning facilities, a safer public transport interchange, improved active travel and vibrant public spaces to Woden.

It will revitalise the eastern side of the Woden Town Centre, while creating a better and more direct connection to the popular green spaces in Eddison Park and beyond.

To help ensure the new CIT Woden will deliver public spaces and facilities which bring vibrancy and connection to the town centre we asked the community for views on the design and use of public spaces in the precinct. This report highlights what we heard in the consultation and outlines the ways we're ensuring the project is built on community feedback.



What does this project include?



A new 6-star Greenstar, specialist designed CIT campus and teaching hubs.



A new light rail ready public transport interchange, with more bus stops and passenger-friendly shelters



New bus layovers and driver facilities to support the new interchange



Better pedestrian and active travel connections



An integrated youth foyer, with up to 20 independent units and communal living spaces



Ground level retail and meeting spaces



New public places, facilities and green spaces, including public toilets and secure bike storage.



A new pedestrian boulevard linking the interchange to Woden Town Square



A new local shared zone between Bowes and Bradley streets



Who we heard from

Over the 10-week consultation period we heard from a broad range of stakeholders, ensuring a wide range of views were captured.

Feedback was received from:

- > Current CIT students
- > Future CIT students
- > Local business owners
- > Local residents
- > Woden area workers
- > Woden area commuters



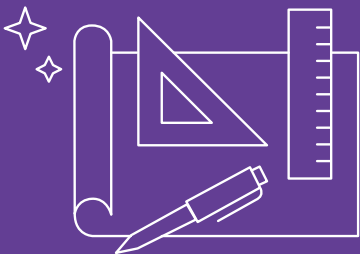
How we consulted with the community

We spoke to the community via:

- > an Online YourSay survey
- > direct emails to and from stakeholders
- > direct community consultation in online and walk in information sessions
- > attendance at the CIT Open Day
- > the project's Community Reference Group
- > regular newsletter drops to local residents and to subscribers

Your feedback

During the consultation period, several key themes emerged as being important to the community. Some of these include:



Modern design

The community agrees modern building design and facilities proposed will boost the appeal of the Woden town centre.



Shelter

The community is looking for shelter from adverse weather when commuting from the interchange to other parts of Woden town centre and waiting at the public transport terminals.

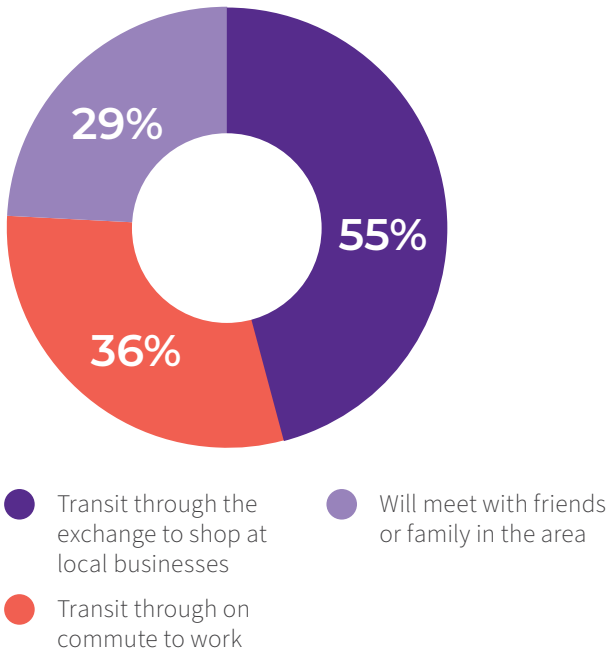


Green spaces

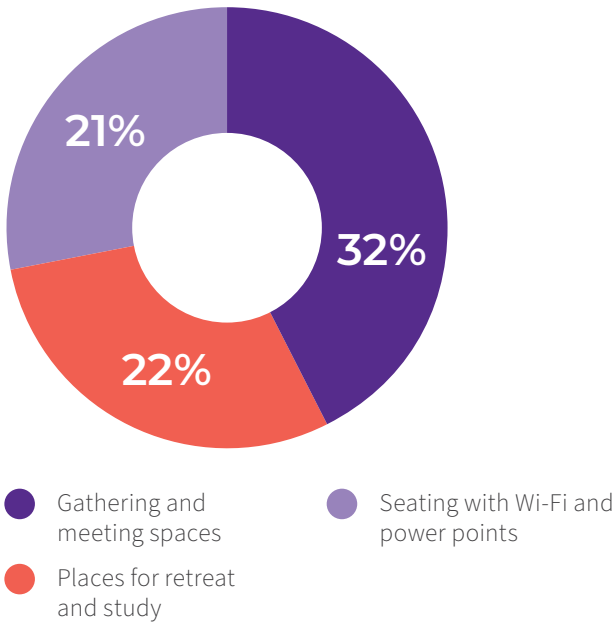
The community is interested in what kind of plants will be featured in the green spaces around the campus.

As part of the YourSay survey we asked a series of questions about how the community will interact with the new Woden CIT Campus. The survey had a total of had 281 contributions.

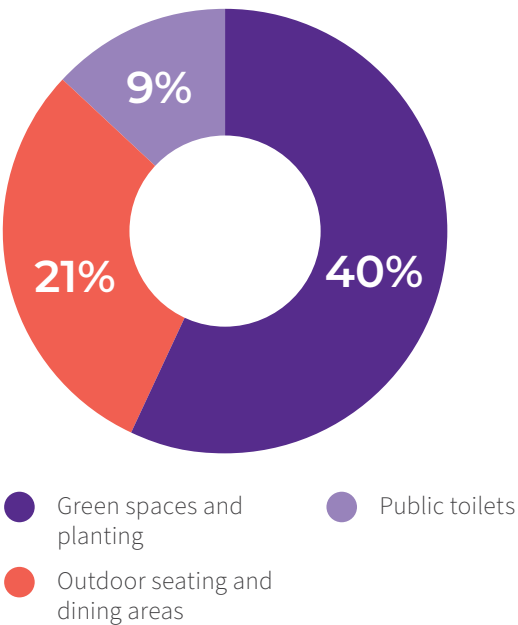
How do you intend to use of the facilities?
.....



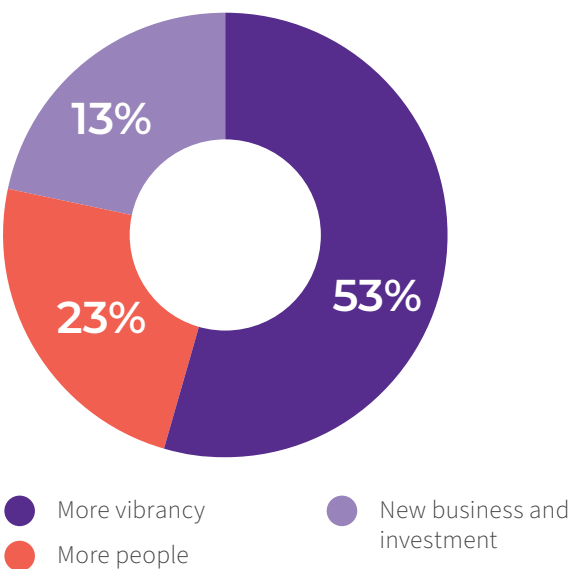
Most favoured inclusions in public spaces like the West Plaza?
.....



What are the most important features?
.....

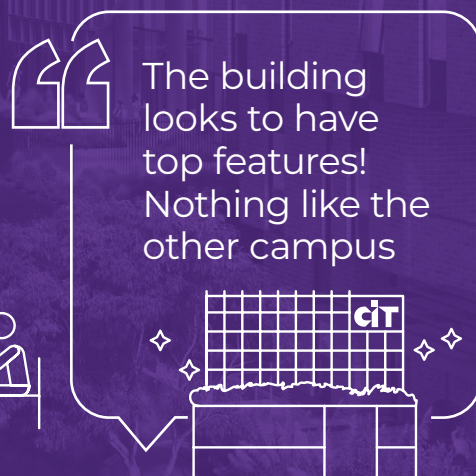
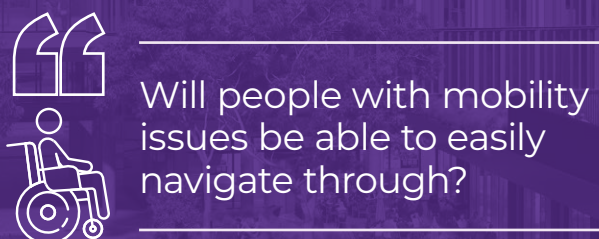
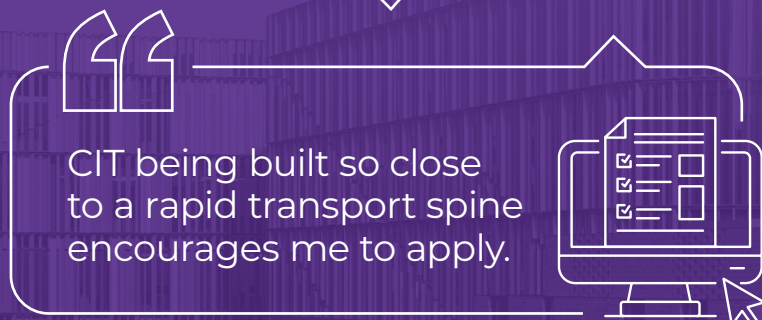
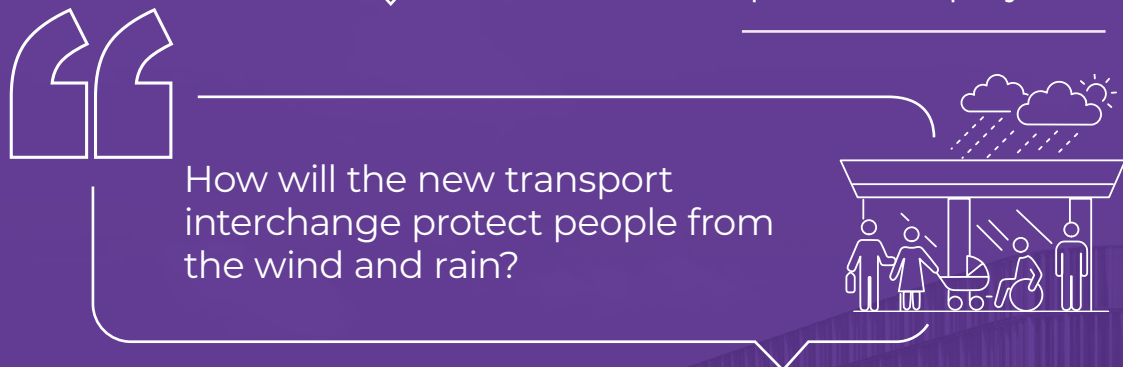


What will the CIT Campus bring to the area?
.....



Common themes from the community

A series of common questions and feedback were raised as part of the qualitative feedback received during the consultation. These include:



Design elements influenced by your feedback:

As the design of the Woden CIT Campus precinct evolves towards the DA phase, several precinct elements have been influenced by community feedback. These include:



Canopy design and extension

The canopy around the main building has been extended to 2.7-metres-wide, creating a colonnade linking the interchange and main campus building, adding to the building's architectural style.



Bike storage

Safe and secure bike storage will be available near the interchange so commuters can quickly and easily continue their onward journey.



Active travel and connectivity

Key entry points to the precinct from key active travel routes provide equitable access for all the community. This means, for example, that stairs and ramps will be co-located and walkways spacious.



Inclusion of CCTV and lighting network

The precinct will feature high coverage lighting and CCTV coverage in areas where pedestrians and vehicles mix. The public realm spaces in the precinct will also have 100 percent lighting coverage at levels appropriate for its use.



Trees and new green spaces

Tree canopy coverage will be provided to thirty percent of the public realm in the precinct. Additional areas dedicated to landscape and lawn space will maximise the community's enjoyment of sunny spots in winter and shaded spots in summer.



Outward facing activation

The main CIT building will offer significant activation of the ground level with food and beverage outlets and services like hair and beauty.



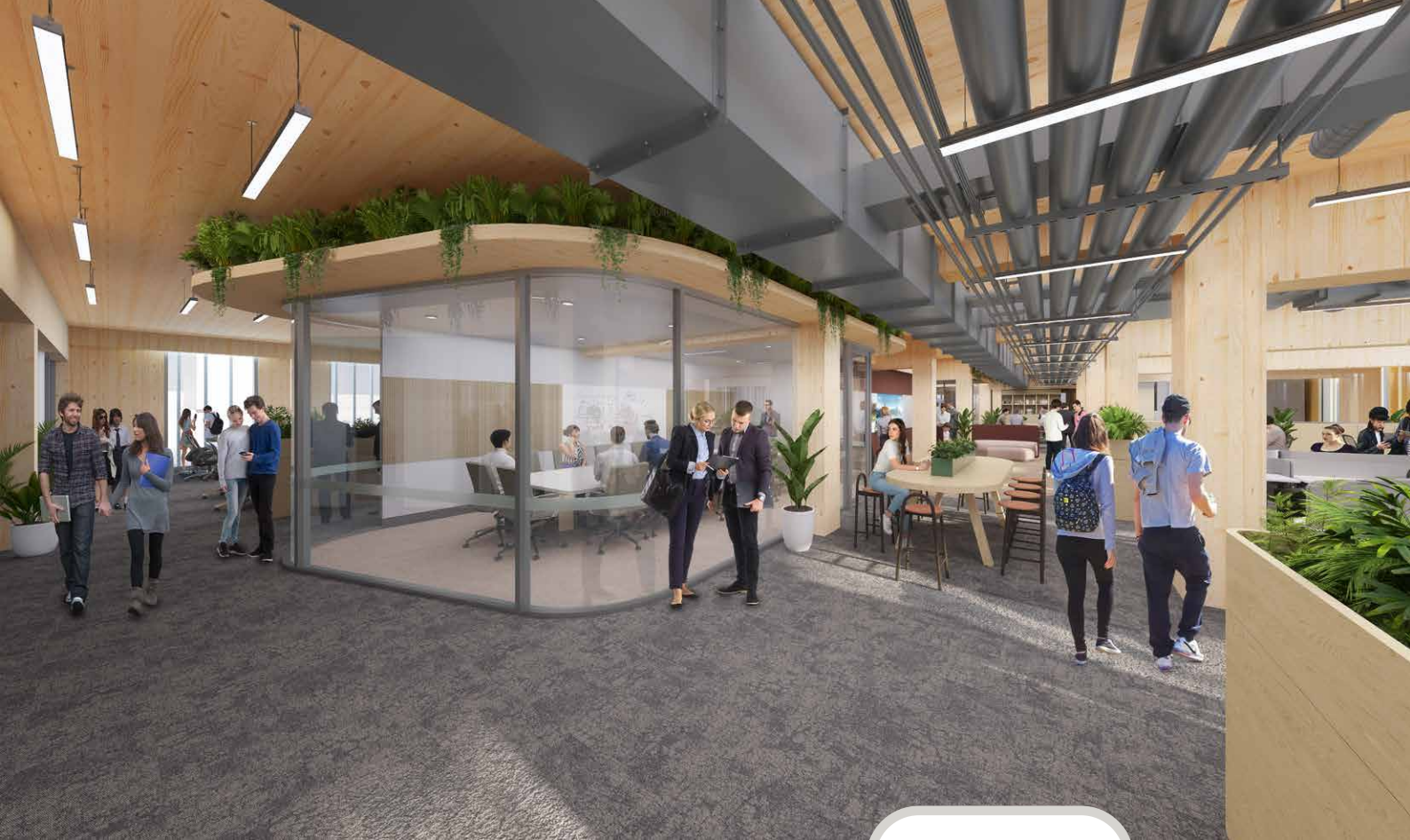
Access to public toilets

24-hour accessible public toilets will be located at the bike shelters on Callam Street.

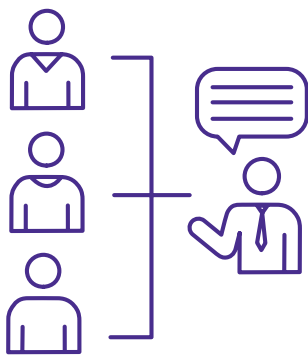


Dog clean up facilities

Dog clean up bags and bins will be included in the design for the North Plaza area.



Thank you *for your* feedback

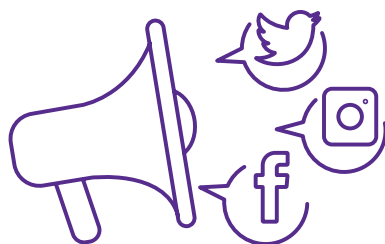
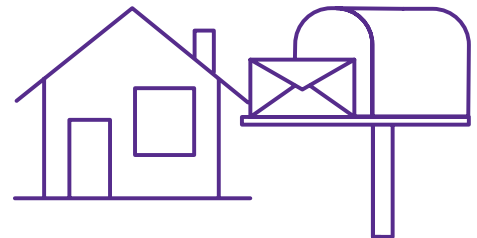


We held **11**
community stakeholder and public information meetings



281 people
responded via YourSay

Printed information went to
8,000 homes
in the Woden region.



Social media posts about
the engagement reached
48,000
people

