

WHAT WE HEARD

LOCAL ACCESS SHARED ZONE CONNECTION BETWEEN BOWES AND BRADLEY STREETS

CIT CAMPUS – WODEN



ACT
Government

OCT 2021



A NEW LOCAL ACCESS, SHARED ZONE FOR WODEN

Bowes and Bradley Streets in the Woden Town Centre will be connected to create a new safe, local access shared zone for pedestrians, commuters, vehicles and cyclists.

The Bowes Bradley shared zone connection is just one part of the exciting CIT Campus – Woden project, which will bring state of the art learning facilities, a new safer light rail ready public transport interchange, improved active travel and vibrant public spaces to Woden. It will revitalise the eastern side of the Woden town centre and provide a convenient connection from the new interchange on Callam Street, through to the new CIT Campus and on to the Woden Town Square and shopping precinct.

We provided the opportunity for the community to have a say on what you'd like to see as part of the Bowes/Bradley shared zone connection. This report outlines what we heard.

Features will include:

- Pedestrian priority
- Approx. 10km/hr speed limit for vehicles
- Safe cycle routes
- Drop off / pick up areas
- Landscaping



THE CONVERSATION

From 5 July 2021 to 20 September 2021 Major Projects Canberra engaged with the community about the planned Bowes / Bradley shared zone connection.

We invited you to have your say on topics such as safety, sustainability and accessibility. We asked you how you might use the Bowes / Bradley connection and what you wanted to see in this zone.

We held four community information pop-ups at various locations in the Woden Town Centre and a further two at CIT Reid and CIT Bruce. We showed you

maps and artist impressions of the plans and took on board your comments, ideas and enthusiasm.

COVID-19 restrictions meant face-to-face consultation couldn't take place and we therefore extended the period for online comment by three weeks.

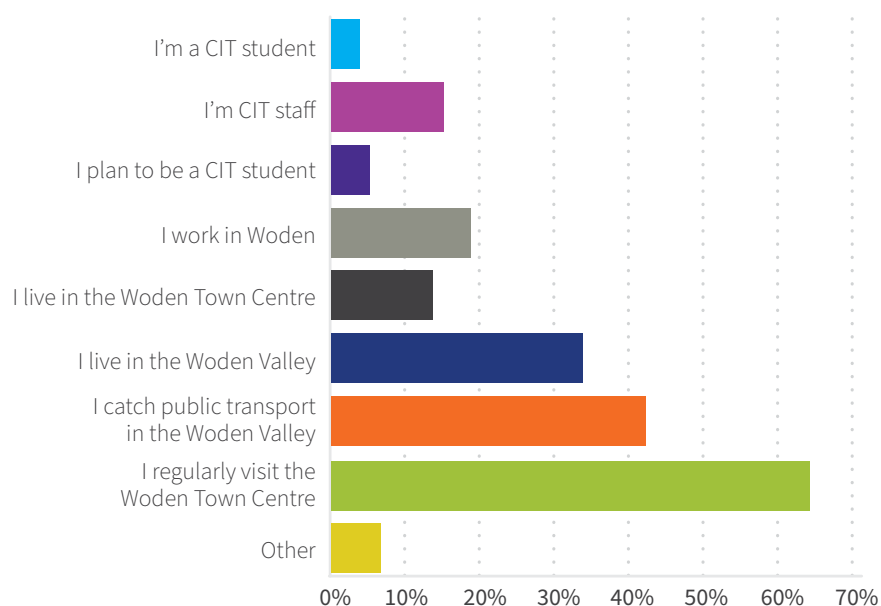
Via the YourSay conversations website, the online survey was open for 11

weeks and included an opportunity for open-ended comments. 64 per cent of respondents took this opportunity to provide more detailed input.

We also added information to the project's **virtual engagement room**. This allowed you to move around a 3D space and view materials specific to the Bowes / Bradley connection and general information about the project.

WHO WE HEARD FROM

We aimed to engage with a broad range of stakeholders. Your feedback will inform design development for the new public realm areas delivering connectivity and a new, vibrant precinct to Woden.



Key stakeholders included:

- Woden residents
- Local businesses
- Woden commuters
- CIT staff
- CIT students
- Broader community

Involved in targeted meetings have been:

- Transport Canberra
- Emergency Services
- Utilities providers
- Our stakeholder group comprising near neighbours to the project

You had your say via the following means:



214 SURVEY
RESPONSES



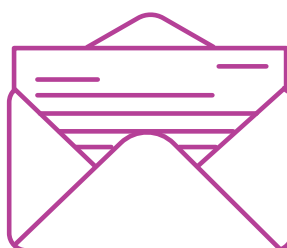
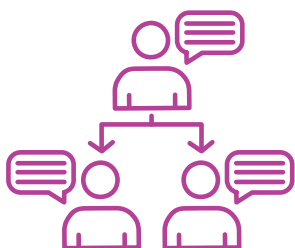
6 COMMUNITY
INFORMATION
POP-UPS



1800 VISITS
TO PROJECT
INFO ONLINE

300+

CONVERSATIONS
WITH THE
PUBLIC



144

DETAILED
WRITTEN
COMMENTS

We also engaged with you in the following ways:



A PROJECT UPDATE
LETTERBOX
DROPPED
TO 7500
RESIDENCES AND
BUSINESSES



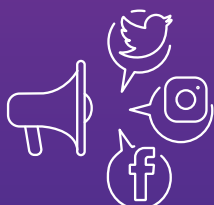
**POSTERS WITH
QR CODES**

DIRECTED TO THE
YOURSAY CONVERSATIONS
SURVEY PLACED AT THE
WODEN INTERCHANGE

AN **ELECTRONIC**
DIRECT MAIL OUT
TO REGISTERED
STAKEHOLDERS



CIT AND TCCS
SHARED PROJECT
INFORMATION AND
SURVEY LINK
WITH THEIR AUDIENCES



**SOCIAL
MEDIA**



THE ACT GOVERNMENT
YOURSAY CONVERSATIONS
PAGE WITH A SURVEY

KEY INSIGHTS

Results showed a high degree of support for the Bowes / Bradley connection.

You are most excited about landscaped spaces that provide places to relax, gather and bring a positive aesthetic to this area of Woden. Safety, active travel, green spaces and functionality are all important to you.

We heard your concerns about the design suiting all of Canberra's seasons, and that is comfortable all year round.

Your feedback from online comments, survey responses and conversations fell into four overarching themes:

FEEDBACK FROM COMMUNITY CONSULTATION



01 Shade from trees

We heard that you want shade on hot summer days as well as the aesthetic, wellbeing and environmental benefits of trees.



02 Seating and plaza atmosphere

We heard that you want places to sit for relaxation, to meet up with people, en-route to buses or shops.



03 Drop off & pick up points

We heard that you want to safely drop people off and pick them up from your private vehicles.



04 Garden beds

We heard that garden beds are important to you and prioritised over grassed areas.





Of the 214 survey respondents, 144 elected to provide written feedback. Each comment was in-depth and constructive, especially given that engaging with this field was optional.

The comments broadly reflected the priority themes outlined in this report. Additionally, a key theme from the comments was cycle safety in terms of secure bike storage, dedicated cycle ways and good lighting.

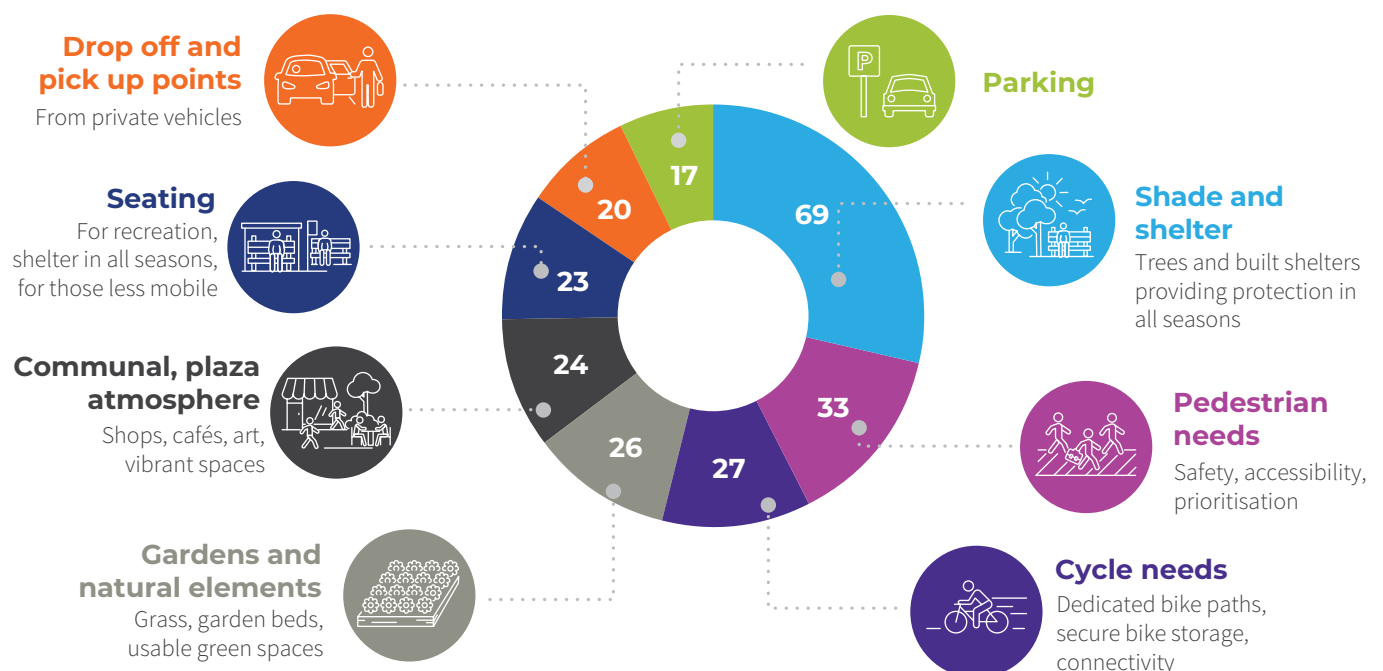
Your comments provided us with valuable insights into the people you are dropping off and picking up – elderly relatives, children catching school buses and those carrying heavy groceries.

You described to us how you might use the areas around the CIT Campus in your lunch breaks - that you would sit on grass and would welcome areas that are designed for all of Canberra's seasons, both in terms of tree canopy and built protection from the elements.

You also described areas with a 'plaza vibe', with 'community atmosphere' and a 'European feel' – with art, performance options, cafés and retail, tables and seating and considered landscaping.

Some of you expressed concern over traffic pressures after closing Callam Street and not enough parking in the designs.

What the community want from a shared local access zone connecting Bowes and Bradley Streets



Other issues you raised (each of these were mentioned less than 15 times):

- Lighting and safety
- Climate change and sustainability
- Water-filling stations
- Recycling and composting
- E-scooters and charge points
- Smoke-free zone



WHAT'S NEXT?

In early 2022, a contractor will be engaged to design and construct the new CIT Woden campus including the Bowes / Bradley connection, public realm areas and connection to the new interchange.

This report and the detailed results will be shared with the successful contractor to inform design decisions.

There will be more opportunities for public input throughout the next design phase.

A Development Application (DA) for the demolition of the existing public transport interchange will be lodged

in 2022 with the planning directorate. Following this, a DA for the CIT Campus-Woden will also be lodged. Plans, artist impressions and all related information will be on display for public comment.

Community feedback and consultation is an important element of project development and ensures that your voice is heard. We appreciate the time that

community members have taken to talk to our project representatives, complete surveys, email questions, use the open comments option and engage with project information to inform feedback. Your comments will continue to impact the design process moving forward. Stay in touch with the project by **signing up for project updates at act.gov.au/citcampuswoden**.

CONTACTING US

Are you getting the right information you need, in a suitable format? Please contact us at any time with suggestions for how we can better communicate appropriate and timely project updates.

@ citcampuswoden@act.gov.au ▶ yoursayconversations.act.gov.au ▶ act.gov.au/citcampuswoden