



NH Architecture



Communication Link



Curijo

# Kingston Arts Precinct Stakeholder and Community Design Engagement Plan

May 2023

## **Acknowledgement of country**

We acknowledge the Ngunnawal people as traditional custodians of the ACT and recognise any other people or families with connection to the lands of the ACT and region. We acknowledge and respect their continuing culture and the contribution they make to the life of Canberra and the ACT region.

We would also like to recognise that our project team members live and work on Traditional Aboriginal Lands across the South-East of this continent. We pay our respects to the Traditional Custodians of Wurundjeri Country (our studio), Boonwurrung Country, Ngunnawal Country, Dharawal Country, Gadigal Country and Cammeraygal Country, and their Elders past, present and emerging.

# Contents

1. Introduction	2
2. Project scope and purpose	3
Purpose	3
Project scope	3
3. Project and site background	4
Previous community engagement	5
4. Engagement and design methodology	6
5. Approach	7
Engagement objectives	7
Communication and engagement approach	7
Informing our approach	8
6. First Nations Engagement	9
Traditional Custodians	9
Engagement Types	11
7. Project timeline	12
8. Project Narrative	13
Project narrative	13
Key Messages	13
9. Stakeholders	15
10. Engagement tools and channels	17
11. Risks and sensitivities	18





# 1. Introduction

The ACT Government is undertaking the Kingston Arts Precinct (KAP) project to create a home for the ACT visual arts community and to develop a vibrant precinct that connects the Kingston Foreshore with the surrounding suburbs. The design and development of the KAP is overseen by the Suburban Land Agency (SLA) until it is completed and handed over to artsACT for operation.

A team led by NH Architecture has been engaged by SLA as the Principal Design team, to deliver a design for the project. This Stakeholder and Community Design Engagement Plan (The Plan) outlines activities to be delivered in support of the design stage of the KAP.



## 2. Project scope and purpose

### Purpose

SLA and the Design Project team will use this plan to guide communication and engagement activities in relation to the design stage of the KAP. The plan outlines:

- Key stakeholder groups and the approach to managing community and stakeholder groups and support opportunities for them to provide input into the design process.
- The engagement tools, channels and processes to support effective, open communication and engagement with key stakeholders and the community.

This Plan details the strategic approach to communication and engagement for all project stages. The Plan should be revised and updated at critical project milestones to reflect feedback and learning from engagement activities.

### Project scope

This Plan has been drafted considering the delivery of the KAP design process. The engagement activities outlined within this plan are designed to align with the relevant design milestones from May 2023 until July 2024.

The program of activities outlined anticipates that community engagement will continue through to construction and considers the potential for engagement actions through these phases. A detailed engagement plan will be developed to support the project through its construction phase.

This Plan acknowledges the public consultation already undertaken in relation to the KAP. Engagement activities through the next phase of design development will not seek to revisit previous areas of engagement.

The figure below details where the current phase of engagement occurs regarding the KAP development.

Figure 1. Engagement overview



### 3. Project and site background

The ACT Government's Arts Facilities Strategy, developed in 2003, outlined the Kingston Foreshore as "leading visual arts production and activity".

From its inception, the KAP has been a key element in the planning of the Kingston Foreshore and is a leading destination for contemporary arts and culture in the ACT region. The ACT Government has made a commitment to delivering a precinct of value to the highest standards, that is sensitive to its surroundings, its cultural heritage and future sustainable living.

The Arts Precinct is located in Section 49 Kingston (bound by Eastlake Parade and Wentworth Avenue and on the eastern edge of Telopea Park). The KAP will be the main visual entry point to the greater Kingston Foreshore area. It is home to some of Canberra's oldest buildings, including the Kingston Powerhouse (now home to Canberra Glassworks), The Fitters' Workshop (now a community facility) and the former Transport Depot. The site is significant for its association with Canberra's early industrial history and its proximity to the Molonglo flood plains, an important Ngunnawal meeting place.

Since the late 1990s, the ACT Government has undertaken various studies relating to establishing a unique visual arts precinct that involves the conservation and adaptation of the Kingston Powerhouse Historic Precinct. In 2007 the Powerhouse was adapted into the now-renowned Canberra Glassworks, forming the first stage of the arts precinct in Kingston.

In 2021, the SLA on behalf of the ACT Government assumed ownership to deliver the development of the KAP on behalf of artsACT and embarked on a process to develop a Place Brief to guide future design and development, space activation and management of the precinct.

Figure 2. Site map





## Previous community engagement

Community and stakeholder consultation commenced in 2011 to understand the viability and demand for a future arts precinct within Canberra. This saw the first ideas formed and the first steps taken towards achieving a leading arts destination for the city.

Building on previous engagement activity, the 2022 engagement journey was centred around developing a Place Brief for the Arts Precinct. Engagement activities included stakeholder interviews, surveys, youth engagement, co-create workshops, walkshops, a creative panel event,

community panel meetings and community pop-ups. These inputs have been distilled and synthesised to ensure all voices are heard and contributed to the development of the Place Brief.

Curijo, a Canberra-based Aboriginal consultancy business, also undertook engagement with Ngunnawal Elders during this phase of engagement, to further explore their knowledge and connection to the land of the future Arts Precinct. A Statement of Cultural Significance was created. The statement revealed that the Ngunnawal people have historical and ongoing connection to the site and ideas on how the site and its surrounds could be included in the design of the development and its ongoing operation.



## 4. Engagement and design methodology

The Place Brief process underpins the methodology for the design and community engagement that will be undertaken for the KAP.

The vision of the KAP was created by the people who work, live and play in this place, either now or in the future. It is much more than a static document. The Place Brief provides a framework for the Design Project Team throughout the development of the precinct design, through to construction, and activation, to ensure the precinct design stays true to that vision.

Using the Place Brief as a design tool means that design decisions are linked to the design aspirations for a real-world translation into built form.

Placing the Place Brief and the Statement of Cultural Significance at the forefront of the community engagement activities show that the community vision forms the foundation of the design process and is being used to keep the project on track.

### Place Pillars

INTEGRATED OFFERING	CREATIVELY LED	INCLUSIVE AND ACCESSIBLE	CULTURE – PAST, PRESENT AND FUTURE	CONNECTED	DYNAMIC AND SUSTAINABLE
Complementary uses, people, places and spaces, each playing their part in a seamless, integrated offering.	Embracing creativity through artistic practice, exploration, learning, and collaboration.	A welcoming environment, providing access, discovery, engagement, and opportunity for all.	A place of shared stories, ideas, and celebration, on Ngunnawal Country.	Connected and engaged, within the boundaries, and beyond.	Rich and organic, advancing and ever changing, to drive better outcomes.

### Design Principles

Figure 3. Design principles



### Place Considerations

- Front door location
- Multi-functional greenspace
- Arrival and access
- Shared circulation



## 5. Approach

Engagement will ensure the community and key stakeholders can access clear information about the KAP design process and how they can participate and provide feedback.

### Engagement objectives

The aim of stakeholder and community engagement is to:

- Progress the design work for KAP with broad and diverse participation by the community and other stakeholders.
- Establish channels and opportunities for stakeholders to provide input into the design process.
- Provide opportunities for stakeholders to engage with SLA to inform and provide input into the design process.
- Provide clear information about the parts of the project that can or cannot be influenced by the community and others involved in engagement activities.
- Keep the broader community informed with up-to-date and accessible information about the project throughout all stages of design and development.
- Generate public interest and enthusiasm for the project and encourage exploration once the precinct is complete.

### Communication and engagement approach

With significant community interest in the KAP, ensuring a well-informed understanding of the project history, the project milestones, and timelines but also negotiables and non-negotiables will be key to successful community engagement.

A roadmap of engagement activities has been developed to run parallel to key design process milestones. See the project road map in Section 7 for more details.

The key elements of the engagement approach are detailed below.

#### Community engagement

Engagement with key stakeholders and members of the public will focus on providing as many channels and opportunities as possible to view project information, participate in engagement activities, ask questions about the project and the design process and provide their feedback. Engagement activities include workshops, presentations, community pop-ups and regular project updates.

Engagement with the community will also be supported by SLA channels including the ACT Government YourSay website and the SLA website.

Promotion of these activities will be via email, YourSay, regular social media updates, and regular website updates.

#### Community Panel

The Community Panel is made up of community representatives who are participating on behalf of a number of community-based groups, peak bodies, businesses, and resident arts organisations with an interest in the development and design of the KAP. The panel was initially formed in 2019 during an earlier project phase.

The Community Panel will work with SLA and Principal Design Consultant team to inform and provide input into the Estate Development Plan (EDP) and all future Development Applications (DA) - initially followed by all Built Form DAs for the arts building and the carpark.

## Resident Arts Organisations engagement

Engagement with the Resident Arts Organisations. This group will be the future users of the precinct and as such, will have a specific level of input to provide to the design process. The Principal Design Consultant team will engage directly with these founding residents, and the sector to ensure the precinct meets the evolving needs of Canberra's arts community.

## Internal stakeholder engagement

Engagement with internal stakeholders and referral agencies will be centralised around targeted workshops and presentations at key milestones and supported by timely, regular project specific updates. This phase of engagement will be undertaken by the Principal Design Consultant team.

## First Nations engagement

We look forward to building on the relationships established to date. We will prioritise engagement with Ngunnawal, and locally based First Nation Peoples to ensure we capture and celebrate the cultural heritage of this place. This phase of engagement will be undertaken by Curijo. A more detailed description of the approach to First Nations Engagement is in section 6.

## Informing our approach


This plan aligns with the International Association for Public Participants (IAP2) Public Participation Spectrum (table 1), which underpins the various activities outlined in this plan. The spectrum is used internationally and is designed to assist with the selection of the level of participation that defines the public's role in any public participation process.

We use the IAP2 framework to guide stakeholder engagement. This framework builds a common understanding within the project delivery team about how different stakeholders are being engaged and what will be achieved through the engagement.

This engagement program seeks to engage generally with community and stakeholders at the inform, consult and involve levels with some areas of the design being developed using the 'collaborate' level of engagement.

As the project owner, the ACT Government will be the final decision maker.

Table 1: IAP2 spectrum for public participation

INCREASING IMPACT ON THE DECISION 					
	INFORM	CONSULT	INVOLVE	COLLABORATE	EMPOWER
PUBLIC PARTICIPATION GOAL	To provide the public with balanced and objective information to assist them in understanding the problem, alternatives, opportunities and/or solutions.	To obtain public feedback on analysis, alternatives and/or decisions.	To work directly with the public throughout the process to ensure that public concerns and aspirations are consistently understood and considered.	To partner with the public in each aspect of the decision including the development of alternatives and the identification of the preferred solution.	To place final decision making in the hands of the public.
PROMISE TO THE PUBLIC	We will keep you informed.	We will keep you informed, listen to and acknowledge concerns and aspirations, and provide feedback on how public input influenced the decision.	We will work with you to ensure that your concerns and aspirations are directly reflected in the alternatives developed and provide feedback on how public input influenced the decision.	We will look to you for advice and innovation in formulating solutions and incorporate your advice and recommendations into the decisions to the maximum extent possible.	We will implement what you decide.

© IAP2 International Federation 2018. All rights reserved. 20181112\_v1

Source: IAP2 Australasia



## 6. First Nations Engagement

Through the initial consultations with the Ngunnawal community, Curijo's Statement of Cultural Significance highlights their historical connection over thousands of years to the surrounding lands that include the Kingston Arts Precinct.

Curijo will provide guidance and facilitation of culturally appropriate engagement during the design phase with Aboriginal and Torres Strait Islander stakeholders of the Canberra community, with specific input sought from the Ngunnawal community. All consultations will be conducted using culturally safe engagement methods.

The First Nations engagement will be founded on genuine interest, transparency, clarity and inclusivity. The engagement plan will remain adaptable throughout the project based on community's needs.

### Traditional Custodians

The ACT Government is committed to acknowledging the Ngunnawal people and recognise any other people or families with connection to the lands of the ACT and region.

Traditional custodian stakeholders will include:

- Dhawura Ngunnawal Caring for Country Committee (DNCCC)
- Ngunnawal families and other people or families with connection to the lands of the ACT and region.
- United Ngunnawal Elders Council (UNEC)
- United Ngunnawal Youth Council (UNYC)
- Winanggaay Ngunnawal Aboriginal Language Group
- Ngunnawal artists and cultural practitioners

Engagement will take the form of Walks on Country, workshops, provision of feedback, (ideas for them to distribute project updates to their mailing lists) and invitations to community engagement events.

We will engage with Traditional Custodians to:

- Ensure protection and celebration of First Nations cultural heritage, including its interpretation and inclusion within the precinct design.
- Ensure the traditional significance of the land is acknowledged and captured in the design and build phases.
- Attend Yarning Circles/workshops, receive updates/project information and provide Ngunnawal comments and ideas.
- Share opportunities for business participation/contracts.

### Arts stakeholders

Stakeholders may include:

- Ngunnawal and other Aboriginal and Torres Strait Islander artists and cultural practitioners
- Aboriginal and Torres Strait Islander Arts Network
- Indigenous arts groups

Engagement will take the form of the provision of feedback, distribution of project updates to local mailing lists/social media, and invitations to community engagement events.

Arts stakeholders will also contribute to the design of the whole precinct. The Aboriginal and Torres Strait Islander Arts Network will provide feedback on the design of the art space, until a reference group is formed.

### Other First Nations stakeholders

Stakeholders will include:

- Aboriginal and Torres Strait Islander Elected Body
- Canberra Indigenous Business Network (CIBN)
- Local Certified Supply Nations businesses
- First Nations Canberra community
- ATSIComSec (at ACTCOSS)
- Yurauna Centre (at CIT)
- Tjabal Indigenous Higher Education Centre (at Australian National University)
- Ngunnawal Centre (at University of Canberra)

Engagement will take the form of provision of feedback (to distribute project updates to their mailing lists) and invitations to community engagement events.

We will engage with the other First Nations stakeholders to:

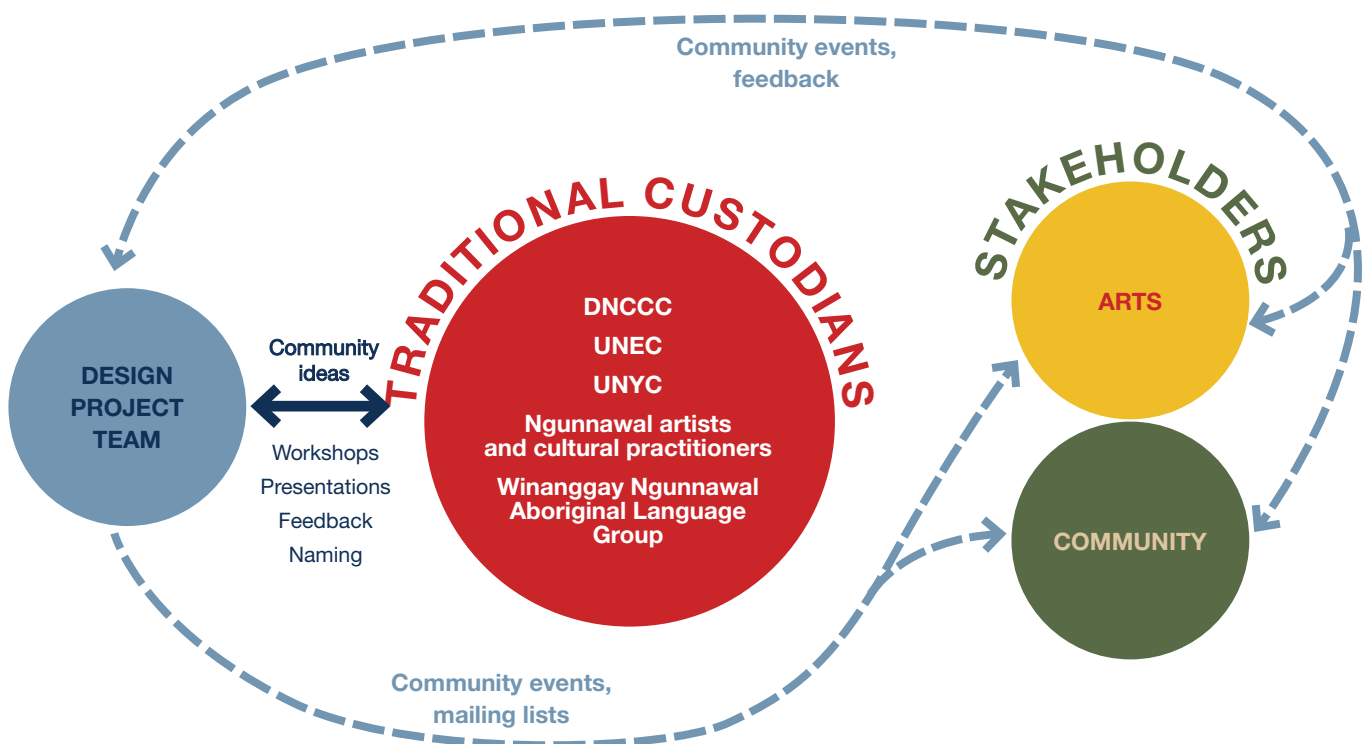
- Provide updates/project information and the opportunity for comment and ideas from the Aboriginal and Torres Strait Islander Elected Body members of the ACT Government.
- Provide updates/project information and the opportunity for comment and ideas from the broader local First Nations community.
- To share opportunities for business participation/ contracts.

## First Nations businesses

There are opportunities for local businesses to be engaged in the KAP, for example, for landscape maintenance or the design, knowledge and use and incorporation of native plants.

Other First Nations businesses will be identified through the engagement process, and opportunities may be promoted through the mailing lists. Businesses can also be identified through the DNCCC, Canberra Indigenous Business Network and Supply Nation.

Figure 4. First Nations engagement





## Engagement Types

Where appropriate, images and documentation from the activities may be contributed as a permanent record into the design. This will be done if permission is attained from all involved.

### Walk on Country

Curijo will arrange a Walk on Country as an initial Ngunnawal introduction to the surrounding land for the design project team.

### Yarning Circles (Workshops)

Yarning Circles are the most culturally appropriate method of engaging with groups of Traditional Owners and other First Nations stakeholders. The delivery of the Yarning Circles will be culturally tailored, with relevant language and materials developed to support engagement. Through an honest, open, and transparent sharing of the precinct design and First Nations components, these will set the scene for community buy-in. Curijo will use its extensive experience in designing and facilitating strategic Yarning Circles to gather perspectives of Ngunnawal and other First Nations stakeholders.

### Community engagement/pop-up events

Curijo will design, organise and attend three events with the Design Group, one during the Precinct Concept design stage and Main Works stage.

Attendance at community events provides the team with the opportunity to increase community engagement and provide updates/project information to members of the Aboriginal and Torres Strait Islander community in Canberra. The community event could include stalls and art activities where opinions could be sought. This would be handled by NH Architecture, Curijo team members and other agreed personnel.

It is intended that all the gathered data will lead to First Nations people living in Canberra being and feeling included and valued, supporting ongoing participation and engagement in the design process, which will encourage the sharing stories, history and connection to the new precinct.

The two community engagement events, to be held during the Main Works stage, will be developed closer to the phase commencing and will ensure input and ideas from stakeholders are considered.

### Feedback to the community

Curijo will ensure cultural safety in the content and presentation of all information to be released to the community and suggest opportunities for Ngunnawal/First Nations business engagement as appropriate. Curijo will also support the use of social media platforms, and surveys, assisting with the development of culturally appropriate communication and promotional materials, and promotion of the YourSay website.

## Presentations

Attendance at Committees as appropriate to provide updates/project information and the opportunity for comment (e.g. DNCCC, UNEC, ATSIEB). These are often 15-20 minute timeslots so will focus on providing an update that can be followed with documentation/information for feedback (see below).

### Requesting feedback

Providing documentation/information in flexible formats to the key stakeholders to ensure the traditional significance of the land is recognised and Ngunnawal cultural heritage is protected and celebrated, including its interpretation and inclusion within the precinct design.

For example, this may be through both online and paper-based documents with precinct options for comment from Ngunnawal stakeholders such as the DNCCC if they are unable to meet for a workshop.

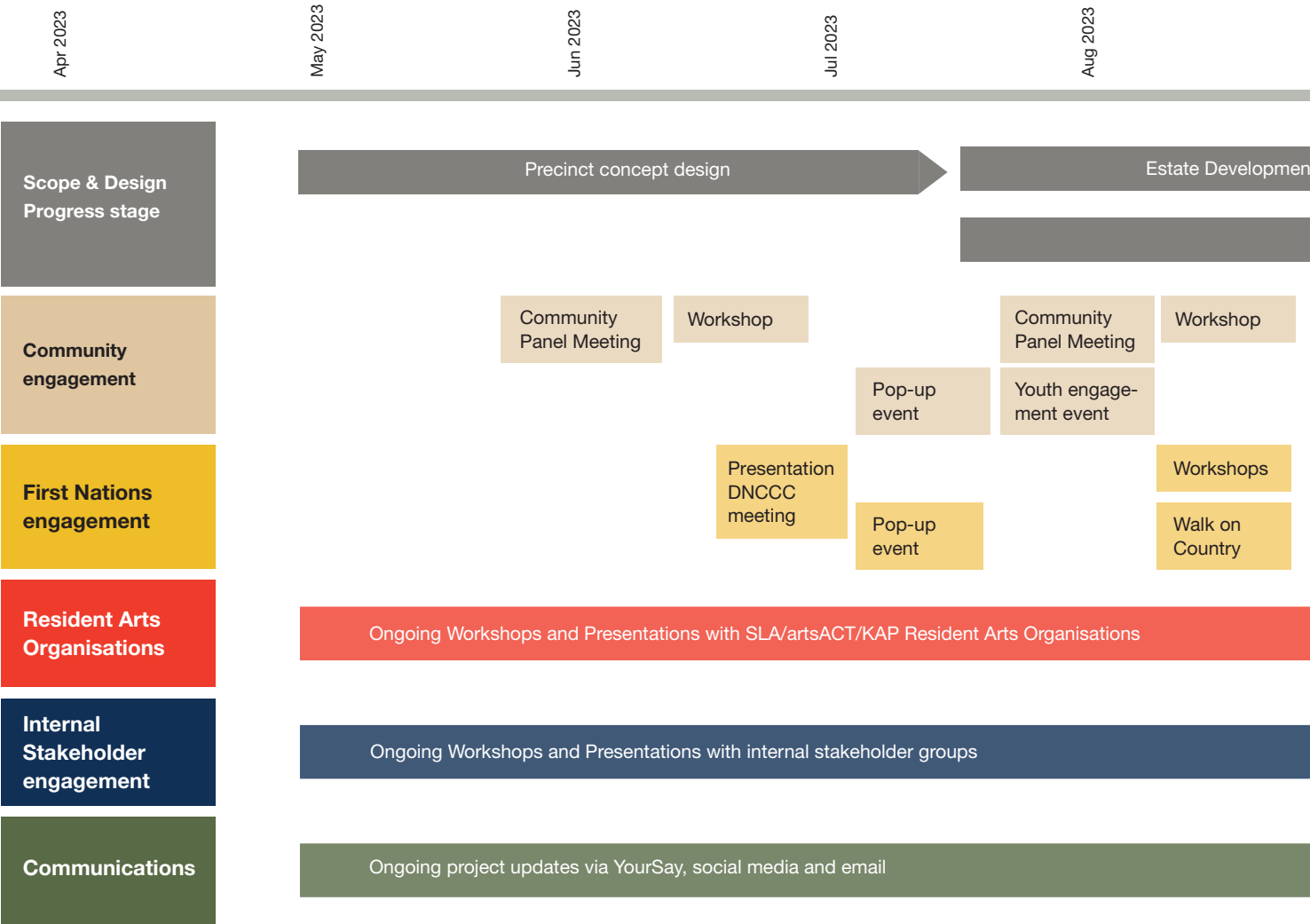
### Mailing lists

Curijo will manage distribution to local mailing lists and appropriate social media pages.

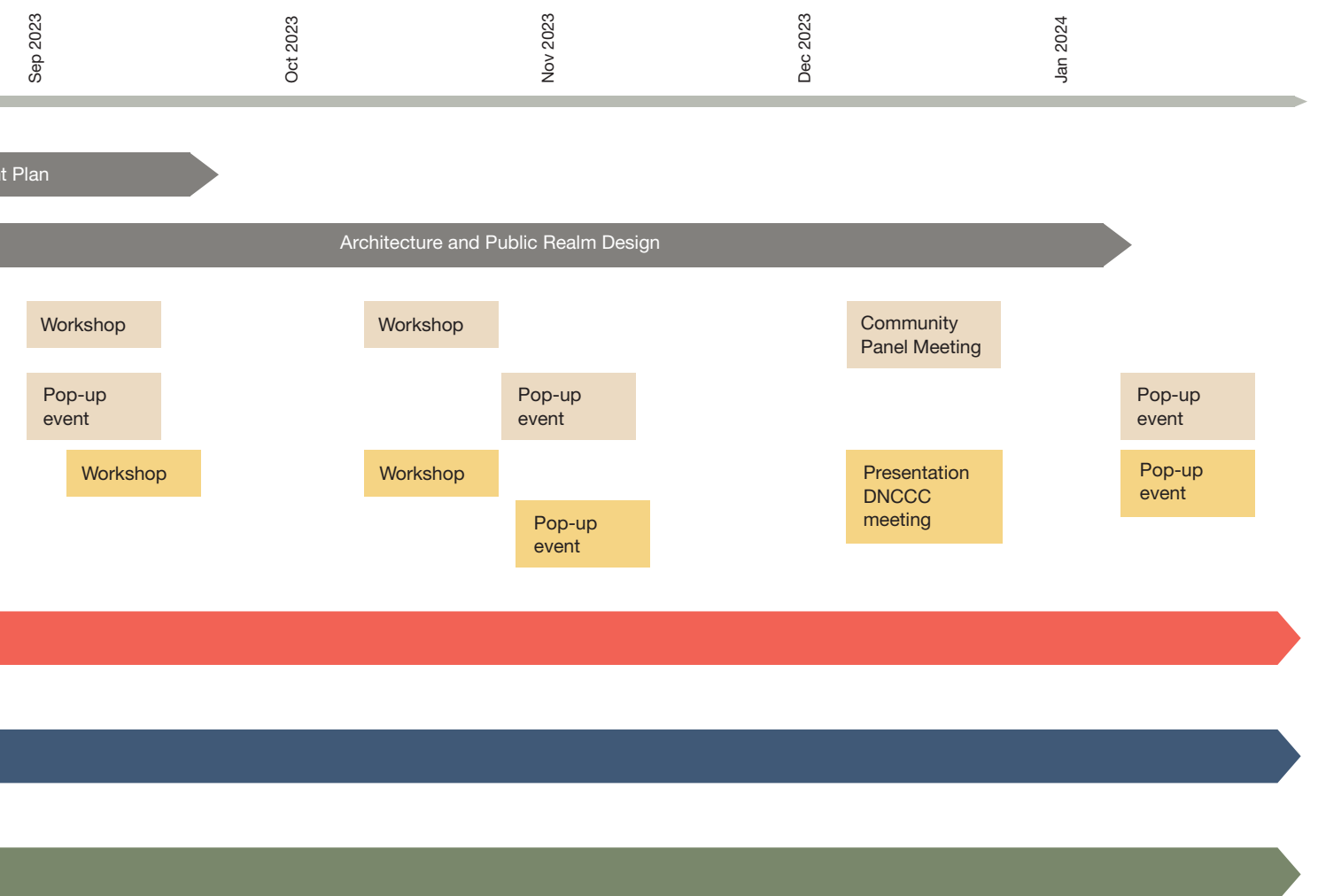
# 7. Project timeline

The following details the proposed project stages until the end of 2023 for the KAP development. Engagement with internal stakeholders, the community and First Nations will occur parallel to key design process milestones. Engagement will continue through 2024, and an updated engagement roadmap will be provided as the project progresses.

Figure 5. Indicative engagement roadmap







## 8. Project Narrative

The KAP projective narrative and key messages provide a clear and cohesive story to guide the project team and to help stakeholders understand the project's purpose value and importance.

### Project narrative

Since the development of the Kingston Foreshore began, the KAP has been a key element of the planning. Committed to establishing KAP as a leading destination for contemporary arts and culture in the ACT region, the ACT Government has made a commitment to delivering a precinct of value to the highest standards, that is sensitive to its surroundings, its cultural heritage and future sustainable living.

The SLA is taking a people-first approach to developing the KAP. With artsACT we have developed a Place Brief with the community, arts organisations, and stakeholders, with a focus on public life, to guide future development of the site.

The Place Brief provides a framework for decision-making to ensure the precinct stays true to its vision to become a leading arts destination, celebrating a rich living history and vibrant community life, through discovery, connection and collaboration. Created through a place-based approach, the Place Brief puts people first.

The purpose of the Place Brief is to guide SLA, artsACT, developers, architects, landscape architects and urban designers in preparing designs and future development proposals that respond to the area's unique character and contributes positively to a sense of place.

### Key messages

#### The design process

The Kingston Arts Precinct Place Brief was completed at the end of 2022. SLA and artsACT have worked closely with the community and key stakeholders to develop the Place Brief.

The Place Brief guides SLA and artsACT, architects, landscape architects and urban designers in preparing the detailed design proposals for the precinct.

For this next stage of the project, NH Architecture team has been engaged by SLA as the Principal Design Consultant team while RPS AAP Consulting and Turner Townsend will deliver Project Management and Quantity Surveying services for the project. Throughout 2023, the Principal Design Consultant team will develop a detailed design that reflects the Place Brief.

Over the next 18 months, the Principal Design Consultant team will develop a concept design for the new subdivision and arts buildings. Further engagement with the community and arts organisations will take place through different stages of the design to prepare submissions for formal approvals that will permit construction to commence.

#### Engaging with the community

Community and stakeholder engagement is vital to the success of this project. Engagement has taken place over many years, and it is important that previous feedback be considered in addition to new contributions received as part of this further engagement.

We have developed an engagement plan that will guide our work with both the community and our internal stakeholders including the future precinct resident arts organisations.

We look forward to building on the relationships established to date and will prioritise engagement with Ngannawal Peoples to ensure we capture and celebrate the cultural heritage of this place.

We look forward to working with the community, progressing our shared goals and bringing the Kingston Arts Precinct to life.

### **Place led development**

The Suburban Land Agency is taking a place led approach to developing the Kingston Arts Precinct. A place-led approach and brings together the ideas and ambitions of the arts organisations and community - the people who live, work and play in the precinct - in a way that brings the precinct to life. It will guide future design and development, followed by space activation and management of the precinct.

In simple terms, the approach means people first and design second. Using this approach, we have developed a Place Brief with the community, arts organisations, and stakeholders, with a focus on public life, to guide future development of the site.

### **artsACT**

The future arts precinct in Kingston will become the definitive destination for Canberra's visual arts and culture. It will bring together a new Aboriginal and Torres Strait Islander art space, six visual arts organisations (Canberra Contemporary Art Space, Canberra Glassworks, Craft ACT: Craft + Design Centre, M16 Artspace, Megalo Print Studio and PhotoAccess) as well as resident artists, and a dynamic program of creative activity.

As the ACT Government's arts agency, artsACT is working closely with these founding residents, the ACT Aboriginal and Torres Strait Islander Arts Network, and the sector to ensure the precinct meets the evolving needs of Canberra's arts community.

### **First Nations Engagement**

We acknowledge that the site we plan to redevelop is Ngunnawal Country. We seek to work in close cooperation with the land's Traditional Custodians, where this place remains as a meeting place for all to respect its natural history.

Curijo, a Canberra-based Aboriginal consultancy business, will provide guidance and facilitation of culturally appropriate engagement during the design phase with Aboriginal and Torres Strait Islander stakeholders of the Canberra community, with specific input sought from the Ngunnawal community. All consultations will be conducted using culturally safe engagement methods.

The First Nations engagement will be founded on genuine interest, transparency, clarity and inclusivity. The engagement plan will remain adaptable throughout the project based on the community's needs.



## 9. Stakeholders

Following is an overview of the key project stakeholders who need to be engaged with during this phase of communication and engagement. Engagement will be focussed around three key stakeholder groups.

- Internal Stakeholders
- Community
- First Nations Stakeholders

**Table 2: Stakeholder categories**

<b>INTERNAL STAKEHOLDERS</b>	
Delivery team	Suburban Land Agency (SLA) artsACT
Inter-agency	Transport Canberra and City Services Directorate (TCCS) Chief Minister and Treasury and Economic Development Directorate (CMTEDD) ACT Property Group Heritage ACT
Government bodies and other referral agencies	Environment, Planning and Sustainable Development Directorate (EPSDD) ACT Planning National Capital Design Review Panel (NCDRP) National Capital Authority (NCA) Evoenergy Icon Water Environment Protection Agency (EPA) Events ACT Emergency Services Authority (ESA) VisitCanberra
Resident Arts Organisations	Megalo Print Studio Canberra Contemporary Art Space Aboriginal and Torres Strait Islander Arts Space Craft ACT M16 Artspace Photo Access Canberra Glassworks
<b>FIRST NATIONS STAKEHOLDERS</b>	
Traditional Custodians	Dhawura Ngunnawal Caring for Country Committee (DNCCC) United Ngunnawal Elders and Youth Councils and (UNEC) Ngunnawal families and other people or families with connection to the lands of the ACT and region United Ngunnawal Youth Council (UNYC) Ngunnawal artists and cultural practitioners
Aboriginal and Torres Strait Islander art stakeholders	Aboriginal and Torres Strait Islander Arts Network Indigenous arts groups,
Other First Nations community Stakeholders	Aboriginal and Torres Strait Islander Elected Body (ATSIEB) Canberra Indigenous Business Network (CIBN) First Nations Canberra community ATSIComSec (at ACTCOSS) Yurana Centre (at CIT)

## COMMUNITY

KAP Community Panel	Collective of impacted stakeholders who have participated in the creation of the KAP Place Brief
Artists/Arts Community	Canberra Arts Organisations (non-resident) Individual practitioners Arts workers Art students Art teachers
Peak and community organisations	Pedal Power ACT National Trust of Australia Property Council of Australia Australian Institute of Architects ACT Australian Institute of Landscape Architects ACT Planning Institute of Australia ACT Canberra Convention Bureau Canberra Business Chamber Capital Region Heritage Rail
Educational institutions	Universities and Canberra Institute of Technology Nearby schools and childcare (Narrabundah College)
Residents and community groups	Kingston and Barton Residents Group Griffith Narrabundah Community Association Inner South Canberra Community Council Youth Reference Group Youth Advisory Council Foreshore Owners Corporation Association Near-neighbours Canberra community
Business and commercial	Kingston Foreshore businesses Manuka Business Association Old Bus Depot Markets Bean and Table Brodburger Fyshwick Business Association Inner South Canberra Business Council Property Council of Australia (ACT) Canberra Glassworks Megalo Print Studio

## 10. Engagement tools and channels

The table below provides an overview of the tools and engagement activities to support the KAP design process.

**Table 3. Engagement tools and channels**

Tool or channel	How it is used	Level of engagement
<b>Community Panel</b>	<p>The role of the Community Panel is to contribute to the project design development reaching Development Approval.</p> <p>The Community Panel will be invited to contribute to broader communication and engagement activities during the design process including community workshops and pop-up feedback sessions.</p>	<p><b>Collaborate</b></p> <p>We will partner with the members of the Community Panel to incorporate insights, advice and recommendations into the design process.</p> <p><b>Consult</b></p> <p>We will keep the panel members informed, listen, and acknowledge concerns and aspirations and provide feedback on how stakeholder input influenced the strategy.</p> <p>We will seek your feedback on drafts and proposals.</p>
<b>Workshops</b>	<p>A number of workshops will be held to gain input from key stakeholders and the community at key milestones during the design process.</p> <p>These workshops will also help to keep stakeholders and the community informed about engagement process, design changes, and how feedback has been incorporated.</p>	<p><b>Collaborate</b></p> <p>We will partner with workshop participants to incorporate insights, advice and recommendations into the design process.</p> <p><b>Inform</b></p> <p>We will keep the community and stakeholders informed of the project progress and opportunities for engagement.</p>
<b>YourSay</b>	A project page has been established on the YourSay Community Conversations page. This page will enable interested stakeholders to find out more about the project and opportunities to get involved or ask questions.	<p><b>Inform</b></p> <p>We will keep the community and stakeholders informed of the project progress and opportunities for engagement.</p>
<b>SLA Website</b>	The SLA website has created a page dedicated to the Kingston Arts Precinct. The website is being used to house all project information including maps, FAQs and any other relevant project information.	<p><b>Inform</b></p> <p>We will keep the community and stakeholders informed of the project progress and opportunities for engagement.</p>
<b>Community pop-ups</b>	Community pop up events will be held at locations near to the Kingston foreshore to provide the community with an update on the precinct design process.	<p><b>Inform</b></p> <p>We will keep the community and stakeholders informed of the project progress and opportunities for engagement.</p>
<b>Youth engagement activity</b>	A dedicated engagement activity to capture the input from young Canberrans will be undertaken during the design process.	<p><b>Consult</b></p> <p>We will partner with workshop participants to incorporate insights, advice and recommendations into the design process.</p>
<b>Canberra events</b>	We will seek out opportunities to partner with arts and crafts communities, resident arts organisations and larger Canberra events to promote awareness of the precinct design process and encourage feedback and input.	<p><b>Inform</b></p> <p>We will keep the community and stakeholders informed of the project progress and opportunities for engagement.</p>



# 11. Risks and sensitivities

This section outlines potential engagement issues and sensitivities and the proposed measures to manage these.

**Table 4. Key issues and management measures**

Key issues	Management measures
Perceived gap in engagement, communication, project involvement	<p>Provide key messages to clearly explain the engagement and design and delivery processes and timeline so that the community knows what to expect.</p> <p>Provide multiple feedback channels to ensure that all interested community members and stakeholders can easily provide feedback on the project and ask questions.</p>
Engagement fatigue	<p>What has been heard from previous rounds of consultation will be referenced in communication materials.</p> <p>Engagement activities will be streamlined and efficient wherever possible to allow easy participation for those who are time poor.</p>
Lack of broad engagement activities	<p>Establish multiple channels and opportunities for community engagement throughout the development of the precinct. Eg public events and open invitation to workshops.</p>
Community Panel could be perceived as not representative of community demographics	<p>Encourage broad and diverse community participation in other engagement channels and activities.</p> <p>Capture demographic details where possible to better understand representative nature of entire engagement program</p>
Community Panel process is not well integrated into general engagement activities, in particular the community workshops.	<p>Community Panel members to be actively encouraged to participate in all engagement activities.</p>
Perception that the current round of engagement is linked to a statutory government process	<p>Provide clear information to stakeholders that the current engagement is a voluntary process aimed to inform the precinct design process prior to formal statutory consultation.</p>
Perception that SLA is a compliance or regulatory body	<p>Provide clear information about the Suburban Land Agency's involvement in this project.</p> <p>The Suburban Land Agency is unable to represent compliance or referral bodies and cannot provide advice or information on their behalf.</p>
Lack of a diverse range of voices as part of the engagement process	<p>Provide multiple feedback channels to ensure that all community members have an opportunity to provide feedback on the project and ask questions.</p>
A community member passes and the community commences Sorry Business	<p>Should this occur, we must observe cultural protocols. This will impede any consultation until an acceptable time has passed allowing for standard mourning practices. We will adapt our approach and manage through clear and concise communication.</p>

**NH Architecture**

Level 7 Cannons House  
12-20 Flinders Lane  
Melbourne, VIC 3000  
+61 3 9654 4955

[info@nharchitecture.net](mailto:info@nharchitecture.net)

[nharchitecture.net](http://nharchitecture.net)