



ACT
Government

SOUTHERN MEMORIAL PARK MASTERPLAN REVIEW

ENGAGEMENT REPORT

TRANSPORT CANBERRA AND
CITY SERVICES
DECEMBER 2021

CONTENTS

1. EXECUTIVE SUMMARY 3

1.1 PROJECT NEED.....3

1.2 CONSULTATION APPROACH.....3

1.3 PROMOTION OF CONSULTATION OPPORTUNITIES3

1.4 PARTICIPATION.....4

1.5 FEEDBACK THEMES4

2. ABOUT THE PROJECT 5

3. WHY WE ENGAGED..... 6

4. HOW WE ENGAGED 7

4.1 TIMELINE OF ENGAGEMENT7

5. WHO WE HEARD FROM AND HOW?..... 8

5.1 HOW MANY RESPONSES8

5.2 WHO ENGAGED?.....9

6. WHAT WE HEARD..... 11

6.1 KEY INSIGHTS.....11

6.2 ANALYSIS OF THE SURVEY RESULTS12

6.3 ANALYSIS OF OPEN-ENDED QUESTIONS, EMAIL, POP-UP
SESSIONS AND SUBMISSIONS.....18

7. NEXT STEPS..... 22

8. APPENDICES 23

APPENDIX A SURVEY QUESTIONS 23

1. EXECUTIVE SUMMARY

1.1 PROJECT NEED

The ACT Government is building a new cemetery for the southside to meet the needs of our growing city.

Southern Memorial Park (SMP), located on Mugga Lane in Hume, is planned to be a world-leading memorial park located in a bushland park setting. The landscape approach celebrates lives lived, replacing the rigid monumentality of past cemeteries. It also plays a vital role in protecting the cultural heritage and enhancing the ecological values of the site.

A draft SMP Masterplan was prepared in 2012 with work commencing in December 2019 to review it. This required further cultural heritage, geotechnical, environmental, transport and other investigations to ensure the most current information was used for the revised design. In April 2021 the revised SMP Masterplan was finalised.

The revised Masterplan enables SMP to be delivered progressively to meet ongoing community needs in four stages over 100+ years. The staging allows for the site's current use of horse agistment activities to be accommodated for the next 50 years.

Consultation with government and targeted public stakeholder representatives including Canberra Memorial Parks (formerly Canberra Cemeteries), faith groups, funeral directors, Registered Aboriginal Organisations and ACT Equestrian Association was undertaken during the Masterplan development.

This report captures the feedback from the broader community consultation undertaken to inform the public of the Masterplan.

1.2 CONSULTATION APPROACH

Community feedback was sought between 14 April and 7 June 2021 to inform the public of the revised Masterplan, understand community expectations in relation to interment and to identify landscape and recreational features to enhance the function and character of the space. There were eight consultation activities. Six community pop-up sessions were held, two each in Tuggeranong, Woden and Weston Creek Town Centres. A dedicated YourSay page as well as an online survey were established to enable comment.

1.3 PROMOTION OF CONSULTATION OPPORTUNITIES

Multiple channels were used to promote consultation opportunities to the broader Canberra community. These channels are listed below.

- > ACT Government issued media release.
- > YourSay and City Services websites.
- > Emails sent to approximately 100 key stakeholders.
- > Social media posts.
- > Our Canberra electronic delivered mail (EDM) announcement to the Canberra community, and an article in the Tuggeranong hard copy edition of Our Canberra for May.

1.4 PARTICIPATION

In total, the YourSay website received 3,422 page views during the consultation period with 122 participating in the online survey. Social media posts received 8.8% engagement rate with 7,771 impressions. To ensure a diverse cross section of the community could provide feedback, two pop-up sessions in each of the following Town Centres were held: Tuggeranong, Woden and Weston Creek. Over 230 attendees were recorded across the six sessions in the three locations.

1.5 FEEDBACK THEMES

All responses received have been analysed and the key feedback themes are detailed in Section 6. The most common responses we heard are:

- > strong support for the development of Southern Memorial Park as the Bush Cemetery for the Bush Capital
- > it is important to achieve a balance between providing opportunities for community recreation and maintaining the reflective, peaceful qualities of a cemetery
- > restoring the natural landscape and showcasing sustainability is a high priority
- > as part of the high-quality experience, SMP should provide the following amenities and functions including:
 - choice of internment
 - supporting facilities
 - good access.

2. ABOUT THE PROJECT

The ACT Government proposes to develop Southern Memorial Park (SMP) as a major new memorial park on a greenfield site on Mugga Lane in Hume to meet projected demand, particularly for south Canberra where there is a gap in burial and crematorium services.

To progress the project, the SMP Masterplan prepared in 2012 has been reviewed and revised resulting in the SMP Masterplan 2021. This required undertaking further cultural heritage, geotechnical, environmental, transport investigations. Further consultation was also undertaken with government stakeholders, Canberra Memorial Parks (formerly Canberra Cemeteries), and targeted public stakeholder representatives including faith groups, funeral directors, Registered Aboriginal Organisations, Territory Agistment (the current grazing licensee) and the ACT Equestrian Association.

The SMP Masterplan 2021 is a guide that will be used to inform a strategic and staged approach for implementing the cemetery development. The design is flexible enough to accommodate changes that may be needed over the time the full project is delivered.

The Masterplan outlines the development of the SMP site and a burial strategy that fully considers the site constraints and provisioning of long-term interment. It proposes to deliver SMP in four stages with a memorial park life of approximately 100+ years. This allows for approximately 53,600 burials with interment in three broad categories: 'traditional' burials, 'natural' burials which is an emerging trend, and ashes memorialisation.

SMP has been designed to be welcoming and inclusive, allowing different faith and cultural groups to practice their specific rituals. There will be opportunity for designated burials areas dependent on demand. As SMP progresses, Canberra Memorial Parks will liaise separately with faith and cultural groups to allocate dedicated areas as required.

The staged development of SMP allows for the current horse agistment activities to continue using the site during Stage 1 (with minimal disruption) and Stage 2 (with moderate disruption) for approximately 50 years.

A Preliminary Sketch Plan (PSP) has been prepared for Stage 1 construction. The purpose of the PSP is to establish the minimum requirements for the civil works, utilities, water resources and facilities needed to make SMP operational.

During the development of the Masterplan, five guiding design principles were identified in collaboration with the ACT Public Cemeteries Authority Special Project Committee. These are:

- > developing a memorial park for the future
- > delivering a high-quality visitor experience
- > responsiveness to place: the site and its cultural history
- > restoring the natural landscape and showing sustainability
- > engaging with community.

3. WHY WE ENGAGED

Southern Memorial Park is critical social infrastructure with significance to the whole Canberra community. Engagement is necessary to determine whether the design meets the needs and expectations of the community it aims to serve.

During the preparation of the Masterplan, extensive stakeholder engagement was undertaken to develop the design. Multiple meetings and communications were held with government stakeholders, subject matter experts, and the Canberra Memorial Parks Special Project Committee. There was also engagement with targeted public stakeholders including representatives from faith groups, funeral directors, Registered Aboriginal Organisations, ACT Equestrian Association and Territory Agistment (the current grazing licensee).

The focus of this report is the broader public consultation undertaken to inform the community of the Masterplan and seek feedback to understand how the government can meet the five guiding design principles:

- > developing a memorial park for the future
- > delivering a high-quality visitor experience
- > responsiveness to place: the site and its cultural history
- > restoring the natural landscape and showing sustainability
- > engaging with community.

4. HOW WE ENGAGED

To encourage participation from the whole Canberra community and specifically people in south Canberra, a range of communications were undertaken to promote the engagement activities before and during the engagement period.

On Wednesday 14 April 2021 – the first day of consultation – the ACT Government issued a media release, directly followed by the launch of the YourSay and City Services websites. Emails were sent to approximately 100 key stakeholders including the community councils of Tuggeranong, Woden, Weston Creek and the Inner South.

Social media announcements were made via ACT Government channels including Facebook as well as the Transport Canberra and City Services’ Twitter account. Further announcements were made via the Our Canberra EDM on 15 April as well as in the Tuggeranong hard copy edition in May.

Throughout the consultation period we held six pop-up sessions in the town centres of Tuggeranong (6 and 15 May), Woden (8 and 20 May) and Weston Creek (22 May and 3). We also presented to the Tuggeranong Community Council at their June monthly meeting on Tuesday 1 June 2021.

4.1 TIMELINE OF ENGAGEMENT

The timeline for the engagement was as follows:



5. WHO WE HEARD FROM AND HOW?

5.1 HOW MANY RESPONSES

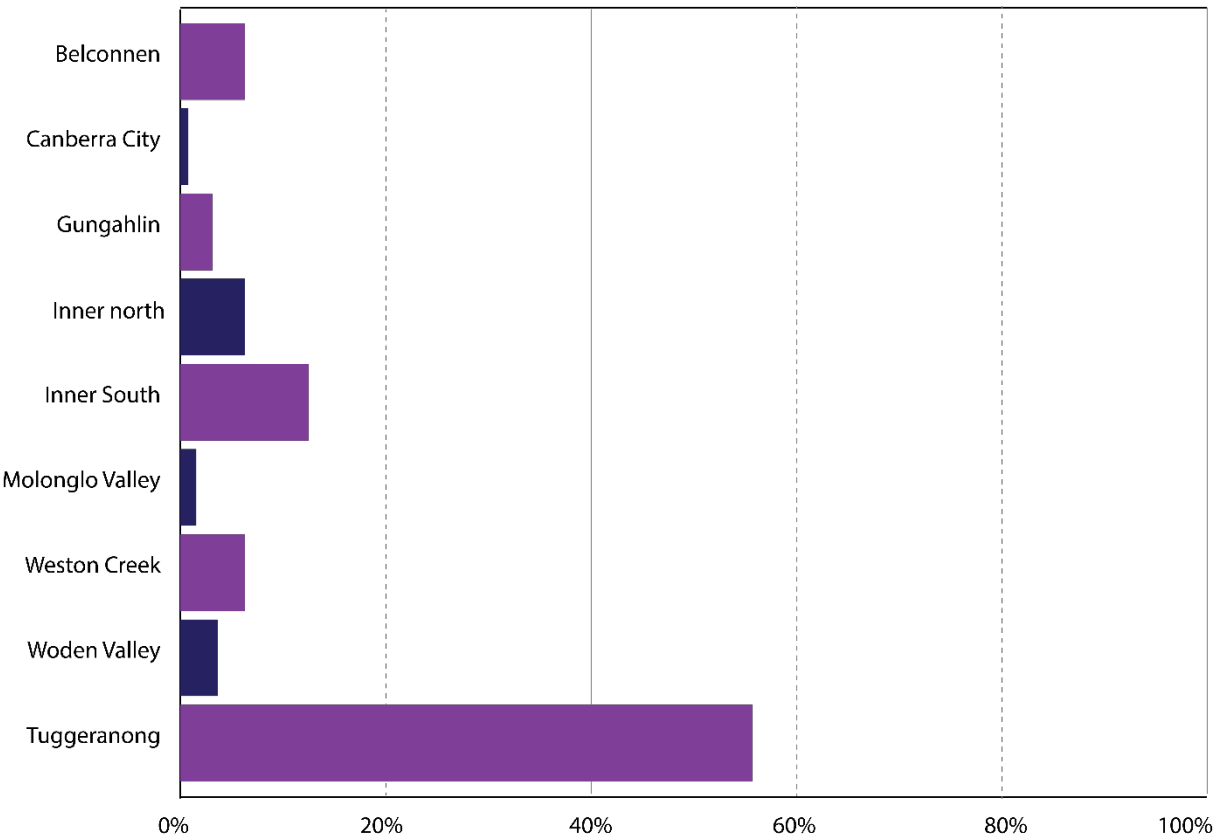
Feedback was gathered from all engagement activities. The response rates from each method are summarised below:

YourSay website	14 April until 7 June 2021	Views: 3,422
		Survey: 122
Written submissions	7 June 2021	Formal submission from the Weston Creek Community Council
	14 June 2021	Formal submission from the Tuggeranong Community Council.
Pop-up sessions	Thursday 6 May 2021 10 am – 1 pm	Tuggeranong Laneways 14 participants
	Saturday, 8 May 2021 10 am – 1 pm	Woden Square, Woden 15 Participants
	Saturday, 15 May 2021 10 am – 1 pm	Tuggeranong Laneways 30 participants
	Thursday, 20 May 2021 11 am – 1 pm	Woden Square, Woden 80 Participants
	Saturday, 22 May 2021 10 am – 1 pm	Coolleman Court (Trenerry Square), Weston Creek 80 participants
	Thursday, 3 June 2021 11 am – 1 pm	Coolleman Court (Trenerry Square), Weston Creek 23 participants
Presentations	Tuesday 1 June 2021	Tuggeranong Community Council.

5.2 WHO ENGAGED?

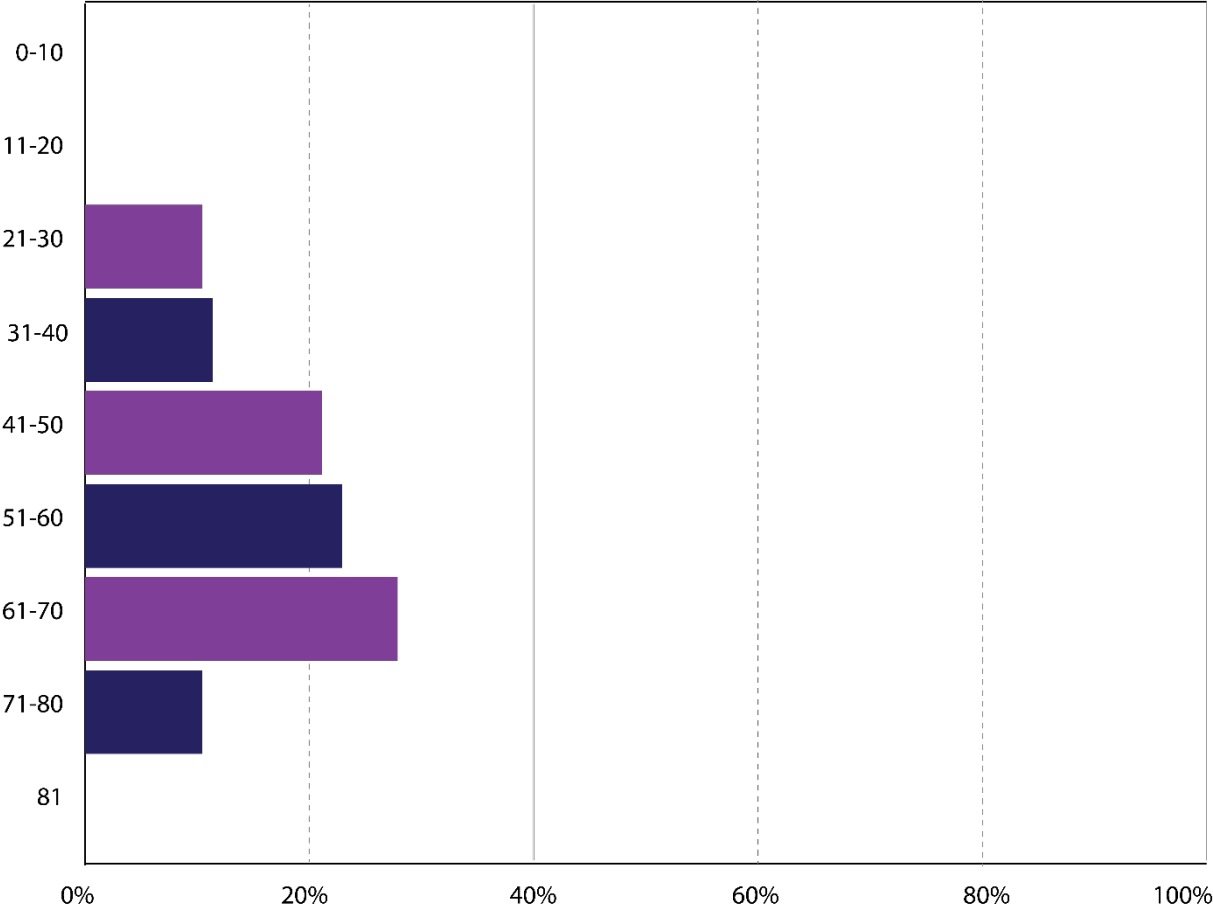
Demographics was collected from the online survey responses. The breakdown of location, household types and ages of survey respondents are detailed below.

Only 93 survey respondents provided location data. 92% of the respondents were from the south of Canberra, with the majority (57%) identifying as being from the Tuggeranong region.



SOUTHERN MEMORIAL PARK MASTERPLAN REVIEW

Only 119 respondents provided information about their age. Most of the participants who provided this information ranged between 51-70 years of age, accounting for 47% of the survey respondents. 21.85% of participants are between the ages of 41-50, 10.08% between 21-30, 9.24% between the ages of 71 -80. No one under 20 or above 81 provided a response.



6. WHAT WE HEARD

6.1 KEY INSIGHTS

Consistent themes were identified across the survey, emails, formal written responses from the Weston Creek and Tuggeranong Community Councils, and pop-up sessions.

The community support the development of Southern Memorial Park as the Bush Cemetery for the Bush Capital.

- A well-maintained landscape setting.
- A natural design that reflects the layout of the land.
- Using local native plants.
- Retaining existing trees.

It is important to achieve a balance between the provision of recreational amenities for the community and the reflective, peaceful quality of a cemetery.

Restoring the natural landscape and showing sustainability is a high priority.

- Restoring and enhancing the natural waterways.
- Maintaining wildlife corridors.
- Protecting threatened ecological communities.
- Building drought tolerance using native plants.
- Incorporating water sensitive urban design principles.
- Reducing the amount of lawn used in the burial areas.

As part of the high-quality experience SMP should provide the following amenities and functions:

Choice of Internment

- Memorial gardens for ashes
- Natural burial
- Traditional burial
- Crematorium
- First Nation Peoples burial area
- Segregated cultural and religious burial areas

Supporting Facilities

- Small function hall
- Small memorial hall
- Courtyard
- Outdoor chapel
- Outdoor amphitheatre
- Large memorial hall
- Café and florist

Good Access

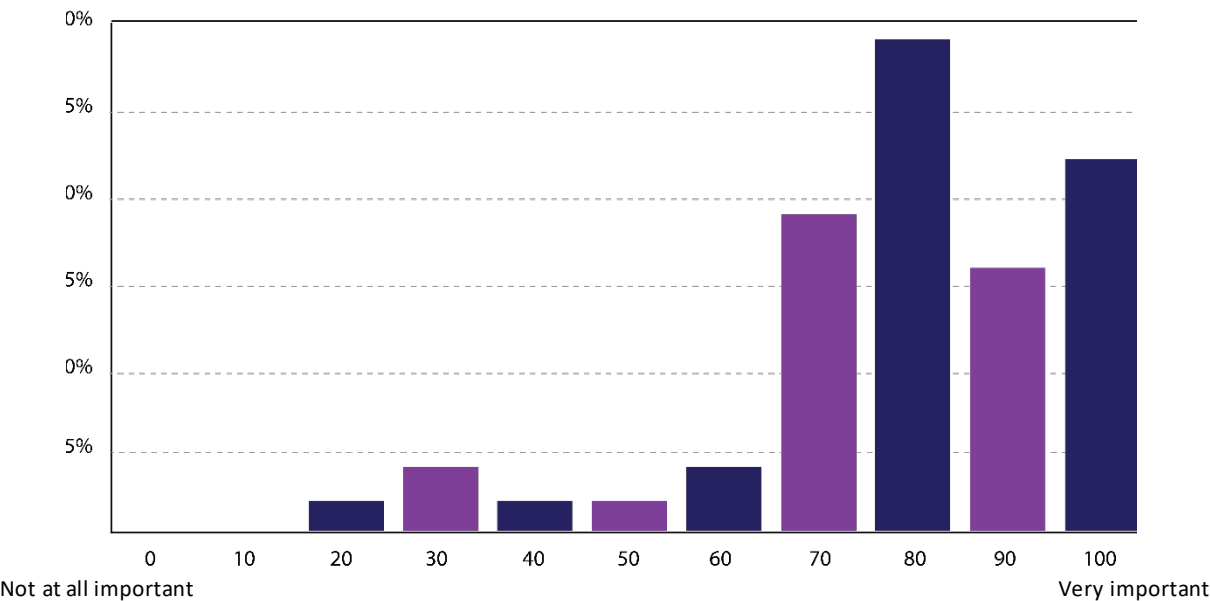
- Ease of carparking
- Public transport
- Paths

6.2 ANALYSIS OF THE SURVEY RESULTS

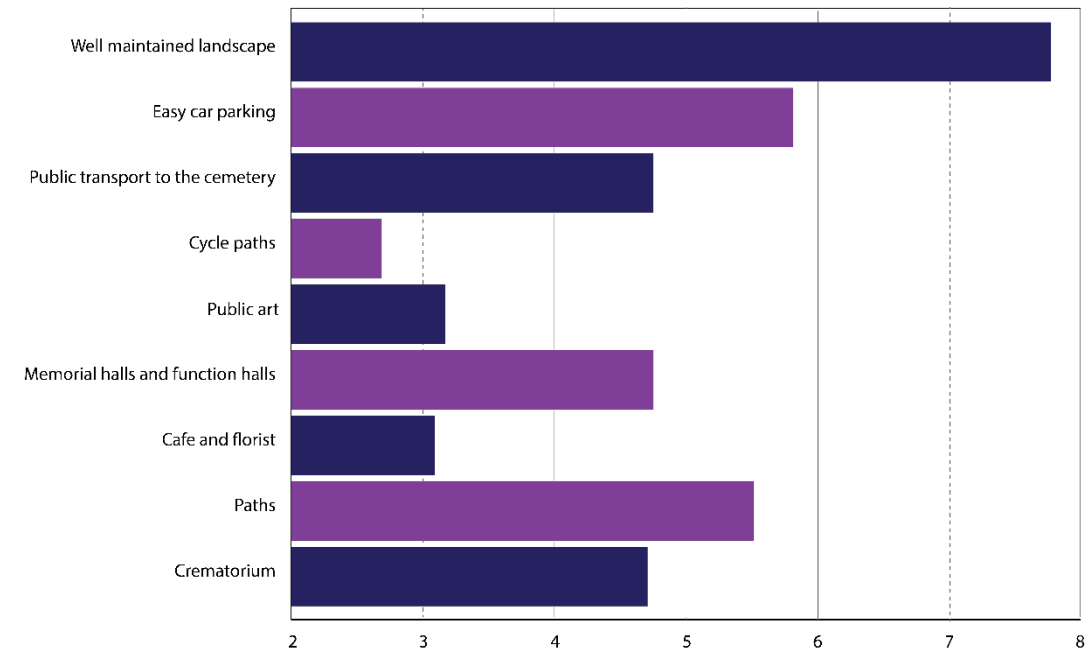
Within the survey, respondents were asked to rank their preferences for each of the guiding design principles.

Delivering a high-quality visitor experience

> 85% of respondents agreed a high-quality visitor experience is important.

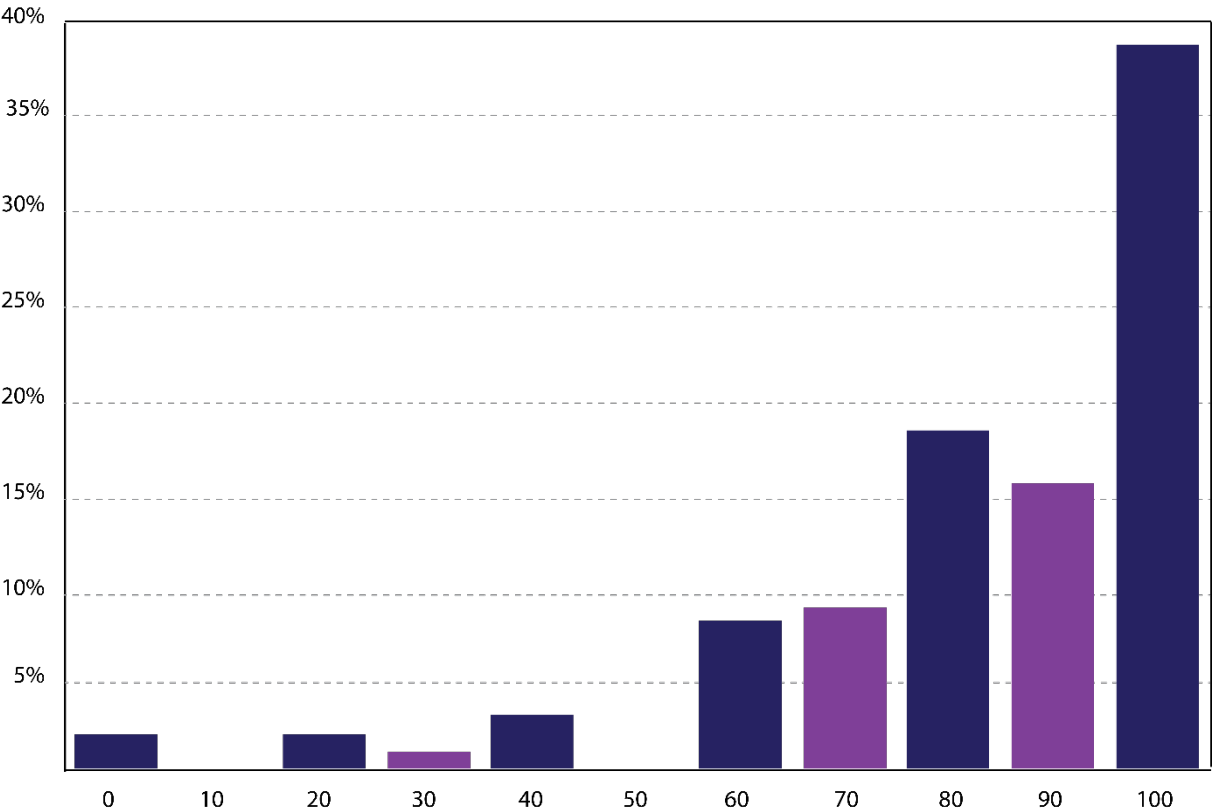


> Well maintained gardens, ease of parking, and paths ranked the highest in helping create a high-quality visitor experience.



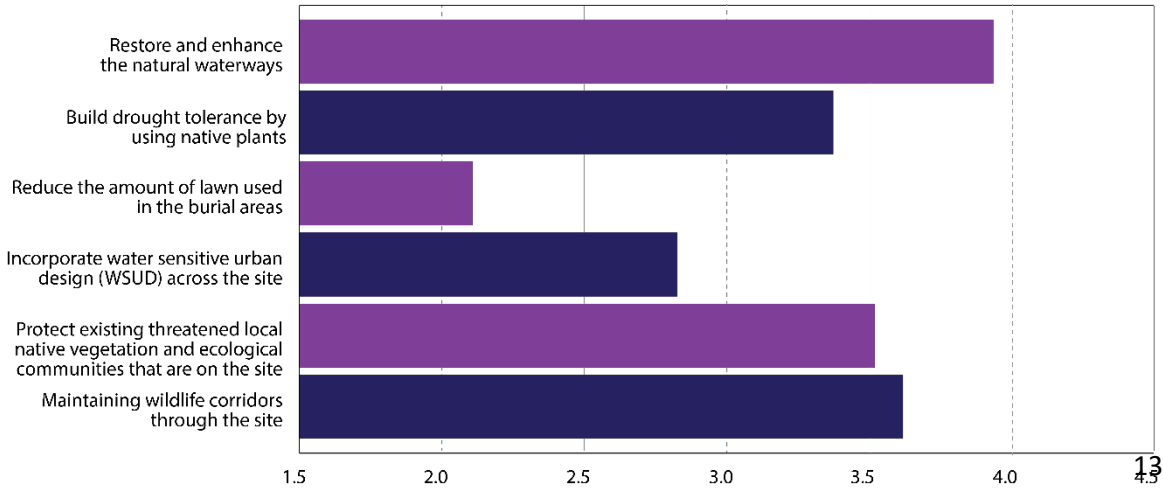
Restoring the natural landscape and showcasing sustainability

> Restoring the natural landscape and showcasing sustainability is considered **very important** by 40% of the respondents. A further 41.5 % of respondents agreed this is **important**.



How this could be best achieved was ranked in the following order:

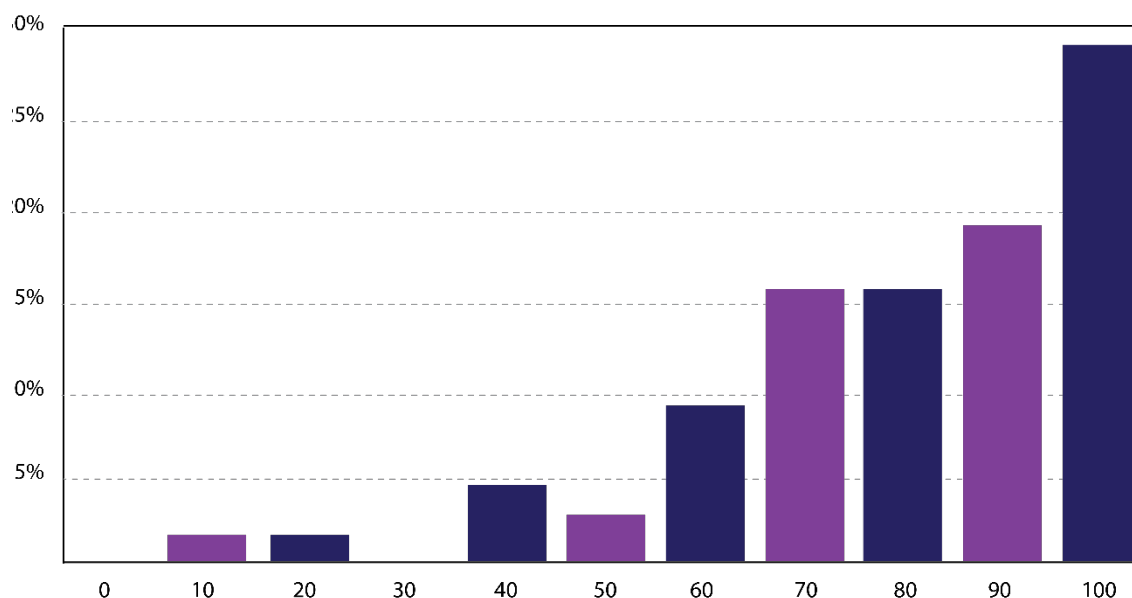
- restoring and enhancing the natural waterways
- maintaining wildlife corridors
- protecting threatened ecological communities
- building drought tolerance using native plants
- incorporating water sensitive urban design principles
- reducing the amount of lawn used in the burial areas.



Reducing the lawn area ranked low. This may be due to a lack of awareness of the high cost to purchase and import water to maintain large areas of irrigated lawn. While the proposed 'water sensitive urban design' approach enables treated water from the wetlands to be harvested and used to irrigate the park, thus reducing reliance on potable water, lawn areas will need to be minimised.

Developing a memorial park for the future

- > The community support the development of Southern Memorial Park for the future. 80% of respondents rated this as important to very important.



Within the survey, respondents were asked to identify their preferred choice of interment and amenities that would suit their personal interment rituals.

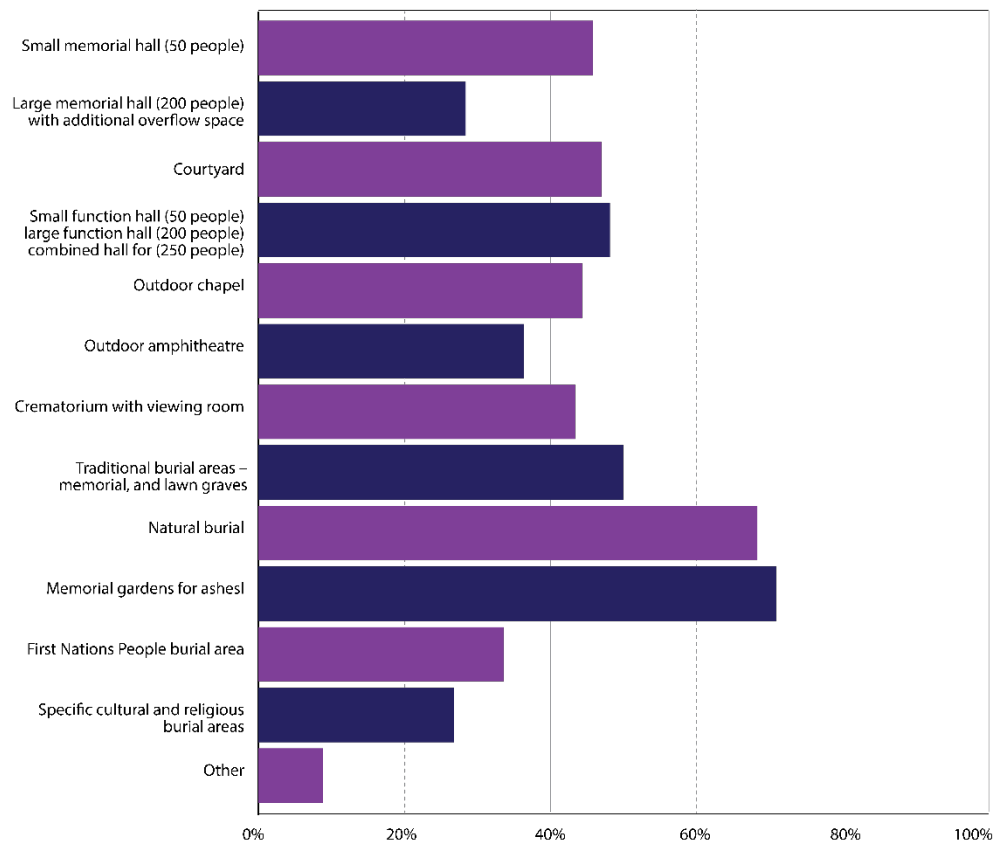
The preferred choice of interment was reported to be:

- memorial gardens for ashes
- natural burial
- traditional burial
- crematorium
- First Nation People burial area
- segregated cultural and religious burial areas.

The preferred amenities and facilities are:

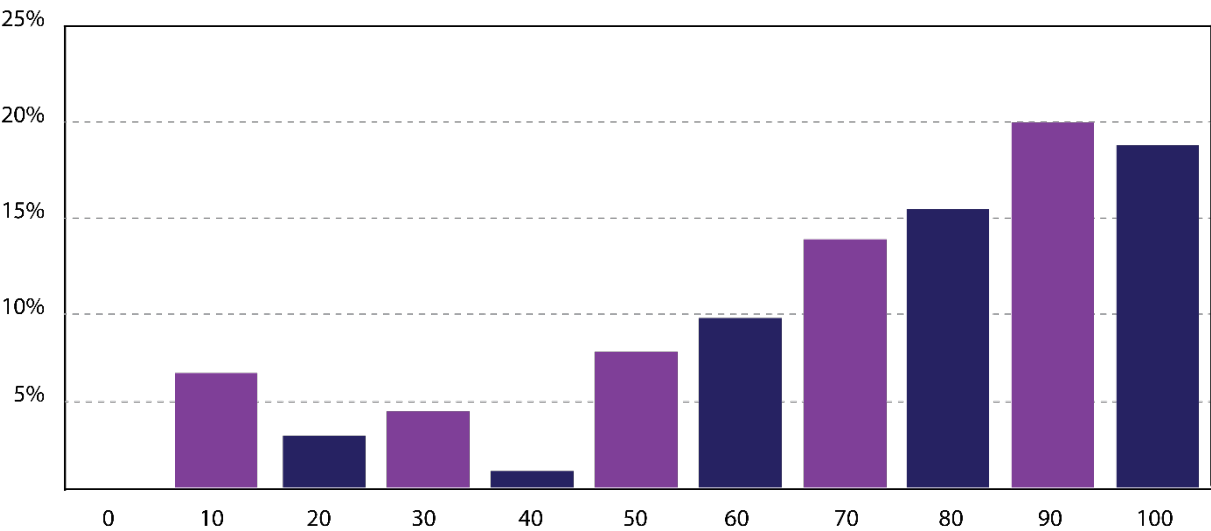
- small function hall
- small memorial hall
- courtyard
- outdoor chapel
- outdoor amphitheatre
- large memorial hall
- café and florist.

SOUTHERN MEMORIAL PARK MASTERPLAN REVIEW



Engaging with community

> 67% of the respondents agreed Southern Memorial Park should provide recreational benefit and engage with the local community.

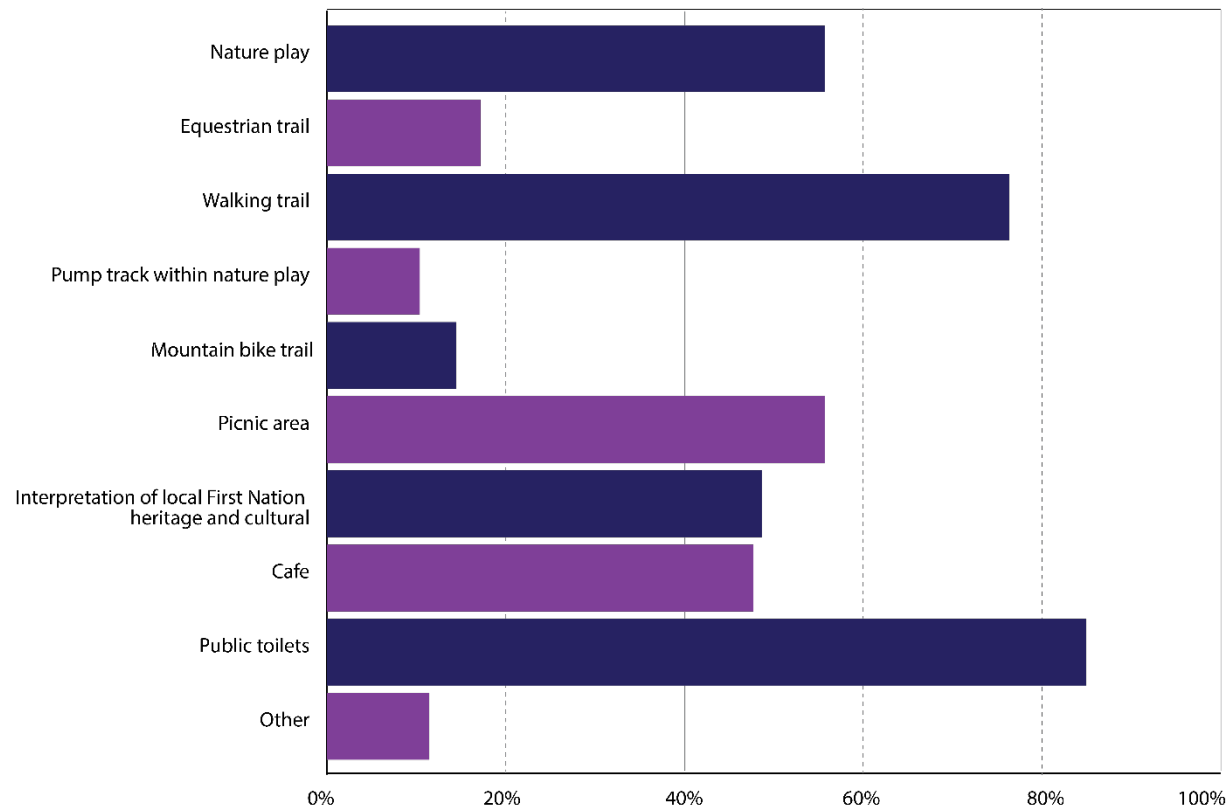


> The most popular recreational activities and associated amenity infrastructure as part of the commitment to encourage the local community to use SMP were named as:

- public toilet
- walking trails
- nature play

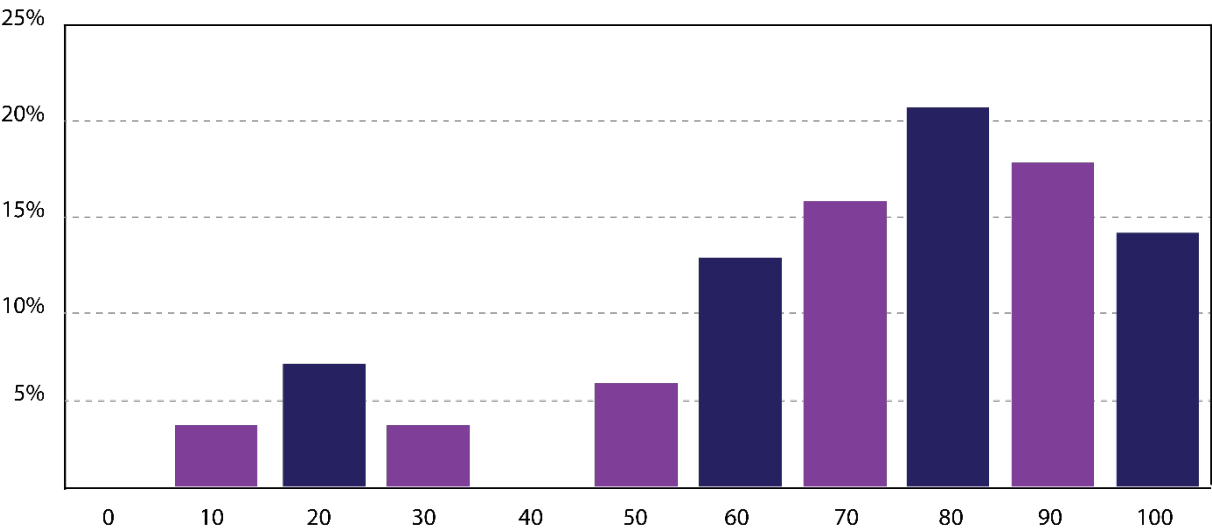
SOUTHERN MEMORIAL PARK MASTERPLAN REVIEW

- picnic area
- interpretation of local Aboriginal heritage and culture
- café
- mountain bike trails and pump tracks were less supported.

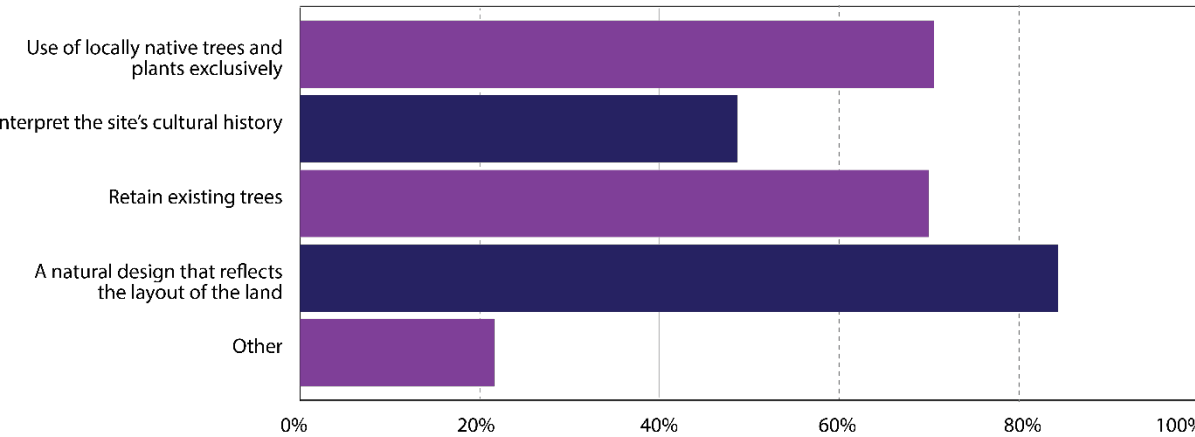


Responsiveness to place: the site and its cultural history

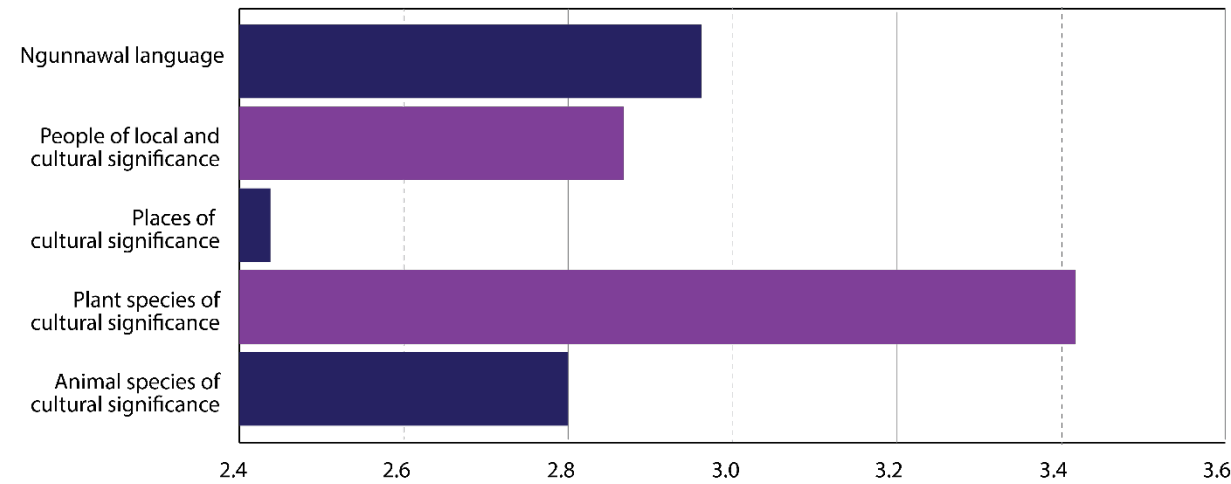
> Respondents agreed reflecting the existing natural site qualities and its cultural history is important (67%).



> A natural design that reflects the layout of the land, using local native plants and retaining existing trees was considered the most important characteristics of a bush cemetery for the bush capital.



> Plant species of cultural significance was the most popular design theme for Southern Memorial Park.



6.3 ANALYSIS OF OPEN-ENDED QUESTIONS, EMAIL, POP-UP SESSIONS AND SUBMISSIONS

In addition to the responses to fixed choice questions outlined above, feedback was received through open ended questions in the survey, direct submissions, and pop-up sessions. Feedback was also received from both the Weston Creek and Tuggeranong Community Councils in the form of formal written submissions.

Approximately 320 respondents provided feedback through these avenues. In total there were over 540 pieces of feedback (data points). Percentages noted in this analysis are a percent of these data points.

The insights below represent the most common themes raised across all feedback channels.

Achieve a balance between recreational amenities and the reflective, peaceful quality of a cemetery.

9% of the responses support SMP including recreational amenities and the park having a community focus. This included comments such as:

- It should be a park that also functions as cemetery/crematorium, not the other way around.
- Maintained gardens/ playground/ family gathering areas to encourage family groups to spend time.

7% of respondents preferred it to be more traditional with only peaceful and reflective spaces.

- It is a place of reflection, peace, beauty to be with nature.
- Nothing that distracts from its purpose or disrespects the people that are coming there to mourn their loved ones.

The PSP for Stage 1 proposes a balance of recreational activity areas and reflective spaces. Each burial area has its own native garden retreat space, or spaces, providing a setting for contemplation, rest, or small gatherings for celebration. Recreational activities are proposed further away from the burial areas or adjacent to central amenities.

Being responsive to the local ecology, natural systems and the climate is important.

17% of the respondents are concerned about the local environment with key themes in the written feedback focused on wildlife, the existing natural environment and use of recycled water.

- Keeping open the western and southwestern boundaries of the Southern Memorial Park to allow unimpeded wildlife access are a must to preserve the Southern Wildlife Corridor as a functional unit.
- Retain existing trees.
- Plantings at the proposed cemetery should preferentially be of a fire-retardant nature.
- Water catchment planning including reed beds and natural drainage systems.
- Clever water collection and recycled water should be considered.

Retaining natural vegetation, ecology and drainage systems are incorporated in the Masterplan. This includes retaining wildlife corridors, incorporating water sensitive urban design and water harvesting for use on the site. Stage 1 has less existing natural vegetation and a natural bush setting will be designed and established as part of the landscape infrastructure.

Different treatments are proposed for Stage 1 traditional burial areas to include some conventional lawn and others with gravels and meadow planting. Harvested water is proposed to irrigate the conventional lawn areas.

An environmental management plan to guide ongoing management and maintenance of SMP is proposed. This will identify land custodians, land managers and leaseholder respective responsibilities for vegetation, ecological areas, weed control, bushfire, fences, trails, and animals.

However over 40% of respondents believe there should be a mix of native and exotic plants to ensure there is good shade throughout as well as a mix of colour. There was strong support for large deciduous trees evident in the feedback.

There is opportunity to plant deciduous trees along the entry road to the central visitor facility and in some of the memorial gardens.

Site selection

Most people who provided comment were not concerned with the location and believed the perceived negative impacts of the nearby Mugga Lane Waste Management Centre could be overcome through careful design. However, 15% of respondents expressed their concern about the impacts of traffic noise and smell due to the proximity of Mugga Lane Resource Management Centre.

Cemeteries and crematoria require specific land zoning and their location carefully considered as they can never be moved. Various locations were investigated as part of the development of the 2012 draft Masterplan and the site off Long Gully Road and Mugga Lane was found to be most appropriate due to its size, zoning, access and proximity to existing facilities. This decision was supported by community consultation undertaken in 2009.

The SMP site is located well to the south of the current Mugga Lane Waste Management Centre and is buffered by a large, grassed south facing mound. More protection will be afforded by the significant landscaping proposed to screen the site.

Other opportunities to minimise possible impacts of odours, noise and traffic have also been considered in the Masterplan and for Stage 1 design. These will continue to be investigated and reflected in the next, more detailed stage of SMP design.

Support for amenities associated with the cemetery.

13% of responses focused on providing facilities and amenities. 30% of these responses are concerned with ensuring the paths are easy and safe for people to navigate and there is adequate accessible car parking.

Responses also requested additional amenities such as vase washing taps, protection from the elements, accessibility for those who are vision and mobility impaired, as well as providing wayfinding signage.

Details of facilities and amenities that enhance the visitor experience will be carefully planned in the next phase of design. Access will be designed to comply with the Australian Standards and Disability Discrimination Act to enable access for as many people as possible.

There is strong support for natural burials and a preference to see natural burials in Stage 1.

11% are supportive of natural burials. Feedback received made mention of more sustainable and environmentally friendly means of disposing of human bodies as well as more affordable and

aesthetic options. There was some uncertainty expressed as to why natural burials were not included in the first stage of the development.

While the Gungahlin Cemetery natural burial area is undersubscribed, it is clear this choice of interment is gaining support in the community. Community feedback has shown a preference for incorporating natural burials and the plans for SMP Stage 1 will be revised to reflect this. It is expected up to 120 natural burial plots will be provided in Stage 1 SMP with features to be developed after site specific investigations are undertaken to further inform the detailed design phase.

Provide for a diverse range of religious, and cultural beliefs, with an awareness of the natural setting.

9% of responses are about specific cultural and religious burial rituals and portions. There was support for SMP to cater for all cultures, beliefs, and burial traditions.

- Be inclusive of all cultures and their burial traditions.
- We need to cater for all our diverse nationalities and beliefs.
- With the population on the Southern area of Canberra growing, this Park will be a welcomed addition to the already existing facilities.

SMP has been designed to be welcoming and inclusive. The design is flexible enough to allow each faith group to practice their specific rituals. Faith groups will be able to apply for their designated areas. A burial area for First Nations People will also be considered.

Other areas of feedback

Support for the crematorium but concern about the impact to air quality from its operations (5%).

More detailed investigations into establishing a crematorium will be undertaken as Stage 2 SMP detailed design is developed. This includes for possible impacts on air quality and air dispersion. A quantitative air dispersion modelling for the crematorium will be prepared for the Development Application submission. The crematorium will also need Environmental Protection Authority approval and comply with regulated standards.

Upgrading Mugga Lane and Long Gully Road to make it safe (4%)

Safety of Mugga Lane users has been considered in designing the main vehicular entry into SMP. The SMP entry will be on Mugga Lane approximately 700 metres south-east of the congested Mugga Lane and Long Gully Road intersection. This entry will be signalised, with auxiliary slip lanes added to enable funeral traffic and SMP visitors to move safely out of fast traffic lanes and into SMP.

Specific technical and safety requirements will be further developed at detailed design for the SMP. The broader road network issues raised are complex and will require separate and dedicated investigation and resolution

Cost of funerals and burial is a community concern (4%)

These comments will be referred to Canberra Memorial Parks, the Authority responsible for cemetery operations.

People are worried about security (4%)

These comments will be referred to Canberra Memorial Parks, the Authority responsible for cemetery operations.

The rules of entry will be similar to Gungahlin Cemetery. All the vehicular entry points will be gated. An automated gate on the public entry road that will allow vehicle access from 7:30am to dusk every day. The site will be unfenced to maintain the existing wildlife corridors through the site. A combination of dense tree planting, swales and berms will deter vehicular access along the site boundary.

Access via Public Transport needs to be addressed (2%)

These comments will be referred to Transport Canberra.

Timing of delivery for SMP given population growth and lack of options for the southside (2%)

The proposed SMP development staging is based on current availability of space for natural and traditional burials in Gungahlin and Woden cemeteries, anticipated need, and time required for development and environmental approvals of future stages.

Sustainability options being considered for SMP in line with ACT Government targets (2%)

Opportunities for more innovation will be explored during the next phases of design.

Acknowledging First Nations People (2%)

Preliminary discussions were held with representative from Aboriginal and Torres Strait Islander Elected Body (ATSIEB) and the Registered Aboriginal Organisations. These conversations will be continued in the development of the Masterplan and the next phases of design to ensure recognition of First Nations People's spiritual connection to the land and appropriate management of culturally significant heritage.

7. NEXT STEPS

Community feedback has been gathered through this engagement to inform future planning and management of Southern Memorial Park.

In considering this feedback, the ACT Government will reflect upon initiatives and improvements that can be made in Stage 1 whilst identifying initiatives that require longer term planning or a more significant investment of funds.

8. APPENDICES

APPENDIX A SURVEY QUESTIONS

Southern Memorial Park - have your say!

The initial masterplan for the future Southern Memorial Park was prepared in 2012. We have now reviewed and updated the masterplan. The future site will be located on Mugga Lane in Hume. It will be a full-service cemetery that will meet the diverse needs of the entire ACT community.

Key features of the masterplan include a variety of burial and memorial areas; a main visitor facility with function rooms, a café, florist as well as housing the crematorium; and landscaping that is consistent with the native surroundings.

Before you fill out the survey, take a look at the masterplan as well as the other documents in the Document Library.

[Next](#)

Naming themes for the Southern Memorial Park

There are various areas of the memorial park that will need to be named, including roads, buildings, the function rooms and the gardens. We want you to tell us which of the below you feel most strongly about.

Please prioritise each of the below into the right column with the theme you feel strongest about at the top.

<div>Ngunnawal language</div> <div>People of local and cultural significance</div> <div>Places of cultural significance</div> <div>Plant species of cultural significance</div> <div>Animal species of cultural significance</div>	
--	--

Principle 1: High quality visitor experience

How important is a high-quality visitor experience to you?

Not at all important Very important [Reset](#)

What elements will help create a high-quality visitor experience?

Please drag the below options into the right column in order of importance to you.

The diagram illustrates a cemetery layout. On the left side, there is a vertical column of nine light gray rectangular boxes, each containing a facility name. To the right of these boxes is a large, empty rectangular area, separated from the boxes by a vertical dashed line. This area represents the main cemetery space where the facilities would be located.

Facility
Well maintained landscape
Easy car parking
Public transport to the cemetery
Cycle paths
Public art
Memorial halls and function halls
Cafe and florist
Paths
Crematorium

Please detail below any additional element/s you think would help create a high-quality visitor experience:

[Previous](#)

Next

Not at all important Very important [Reset](#)

Please select as many as you would like.

- ☐ Small memorial hall (50 people)
- ☐ Large memorial hall (200 people) with additional overflow space
- ☐ Courtyard
- ☐ Small function hall (50 people) and large function hall (200 people) that can be combined into one large space (250 people)
- ☐ Outdoor chapel
- ☐ Outdoor amphitheatre
- ☐ Crematorium with viewing room
- ☐ Traditional burial areas – memorial, and lawn graves
- ☐ Natural burial
- ☐ Memorial gardens for ashes
- ☐ First Nations People burial area
- ☐ Specific cultural and religious burial areas
- ☐ Other (please specify)

If you did not make this selection in the previous question, please skip this question.

Next

Principle 5: Restoring the natural landscape and showcasing sustainability

How important is restoring the natural landscape and showcasing sustainability to you?

Not at all important
 Very important
Reset

How do you believe this could best be achieved?

Please drag the below options into the right column from most achievable to least achievable.

Restore and enhance the natural waterways

Build drought tolerance by using native plants

Reduce the amount of lawn used in the burial areas

Incorporate water sensitive urban design (WSUD) across the site

Protect existing threatened local native vegetation and ecological communities that are on the site

Maintaining wildlife corridors through the site

Please detail below any additional element/s you think would help in restoring the natural landscape and showcasing sustainability?

[Previous](#)

Next

General feedback

Do you have any general feedback you'd like to provide about the revised masterplan for the future Southern Memorial Park?

[Previous](#)

Next

Demographic information

Please tell us a little bit about yourself to help us in ensuring we are capturing feedback from a significant cross-section of the Canberra community.

In which region of Canberra do you reside?

What is your age?

- ☐ 0-10
- ☐ 11-20
- ☐ 21-30
- ☐ 31-40
- ☐ 41-50
- ☐ 51-60
- ☐ 61-70
- ☐ 71-80
- ☐ 81+

Which of the following best describes the age of those living in your household?

Please select as many as apply to your household.

- ☐ 0-10
- ☐ 11-20
- ☐ 21-30
- ☐ 31-40
- ☐ 41-50
- ☐ 51-60
- ☐ 61-70
- ☐ 71-80
- ☐ 81+

If you would like to be kept updated on this project, please provide your email.



ACT
Government

TRANSPORT CANBERRA AND CITY SERVICES
DECEMBER 2021