

DESIGN VISION

Create a unique open space sequence that people want to use. The network of parks will reflect the natural character of Red Hill, celebrate the history of The Lady Nelson and strengthen connections with Red Hill Shops and adjoining streets.



LANDSCAPE STYLE

High quality contemporary style in a traditional setting that responds to the existing topography, using local materials and mix of exotic and native planting.



PLAYGROUND

Accessible, fun for all ages, interactive and interpretive urban art, health & fitness, imaginative, organic.



STREETSCAPE

Define elegant and prestigious streets that compliment the surrounding neighbourhood, provide summer shade or winter sun and calm traffic.



LEGEND					
	ESTATE BOUNDARY		DRYLAND GRASS		SOFTFALL PLAYGROUND
	EXISTING TREE RETAINED		SHRUB PLANTING		PEDESTRIAN PATH
	NATIVE STREET TREES		FEATURE PAVING		LA1 - HERITAGE PARK
	EXOTIC STREET TREES				LA2 - HERITAGE PARK
	OPEN SPACE EXOTIC TREES				PP1 - ACCESSWAY
					PP2 - ACCESSWAY
					PARK SIGNAGE
					LA3 & 4 - HERITAGE PARKS
					PLAYGROUND
					SHADE STRUCTURE
					ENTRY PLAZA PAVING
					SHADE STRUCTURE

STRUCTURES & FURNITURE

An iconic structure, drawing inspiration from The Lady Nelson sailing ship, will form a vibrant focal point to the park and modern durable street furniture will help integrate elements seamlessly with Red Hill Shops.



CONNECTIONS

Active travel , safe and accessible, views to surrounding suburbs and beyond, organic activity, transparency.



OPEN SPACE HIERARCHY

A mix of small heritage pocket parks to public edges with Lady Nelson Park as a focal point neighbourhood park gathering destination. The open space will provide a variety of parks to public edges, follow garden suburb principles, optimise green views and enhance pedestrian permeability.

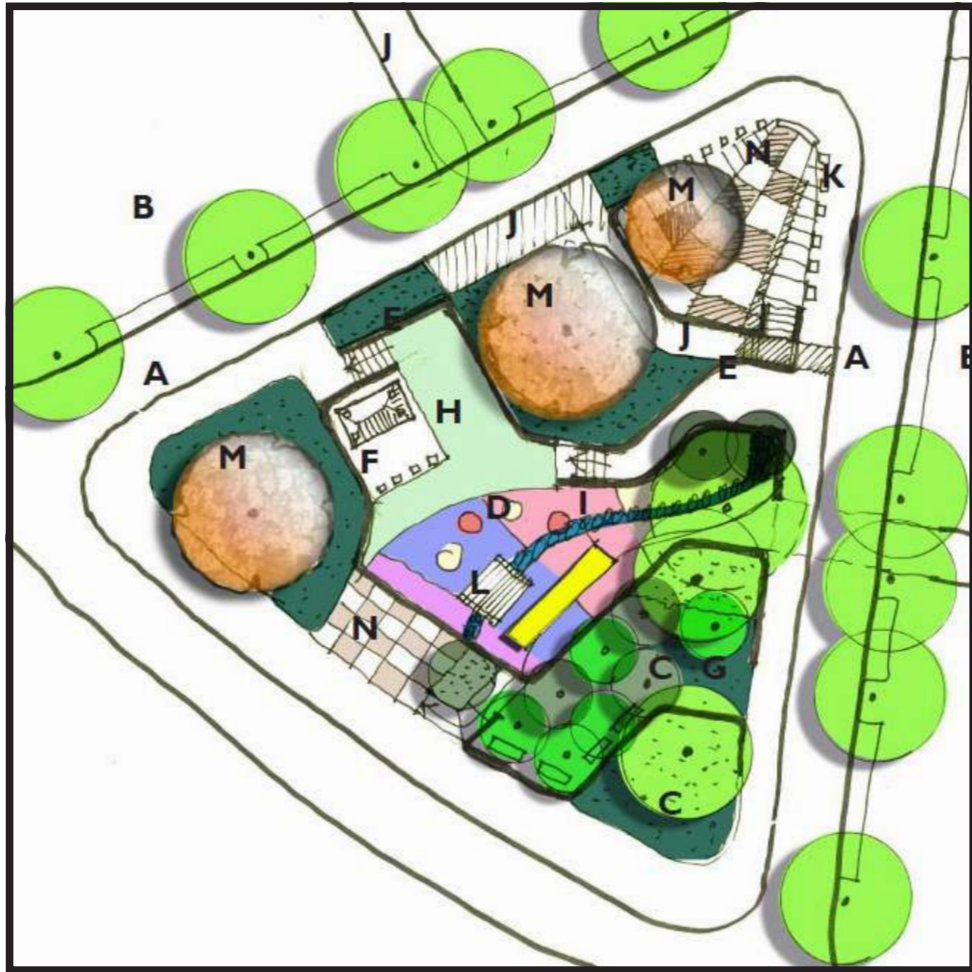


DESIGN EVOLUTION OF LADY NELSON PARK



1. WORKSHOP CONCEPT PLAN

- Dry Creek bed to interpret 'natural springs'
- Small play areas
- Primarily existing trees and turf
- Green suburbs principles
- Open space to retain important views
- Shared streets
- Community asset and destination



2. PRELIMINARY SKETCH PLAN

- Refined level changes
- Greater areas of pathways and play areas
- Stronger paved entry plazas
- Dry Creek Bed with bridge
- Paths to move within the space
- Garden areas and tree plantings to enhance space



3. CONCEPT DEVELOPMENT

- Iconic structure and referencing the story of Lady Nelson Ship
- Strengthened connectivity with Red Hill Shops and access-ways
- Park defined into upper and lower terraces
- Concentrated activities into LNP
- Shade structure away from existing tree canopy
- Dry Creek bed more urban and robust



4. EDP DRAFT PLAN

- Indented angled parking
- Focus play areas and use of red soft-fall mounds to highlight Red Hill
- Village green to lower terrace
- Incorporation of WSUD into park
- Reduction of paving areas and enhanced accessibility
- Quality over quantity



5. EDP FINAL PLAN

- Playground pushed into middle of site due to 20m setback requirements
- Compliance issues met including lower maintenance for mowing grass
- More play equipment
- Design layout strengthened and simplified
- Greater surveillance and supervision areas